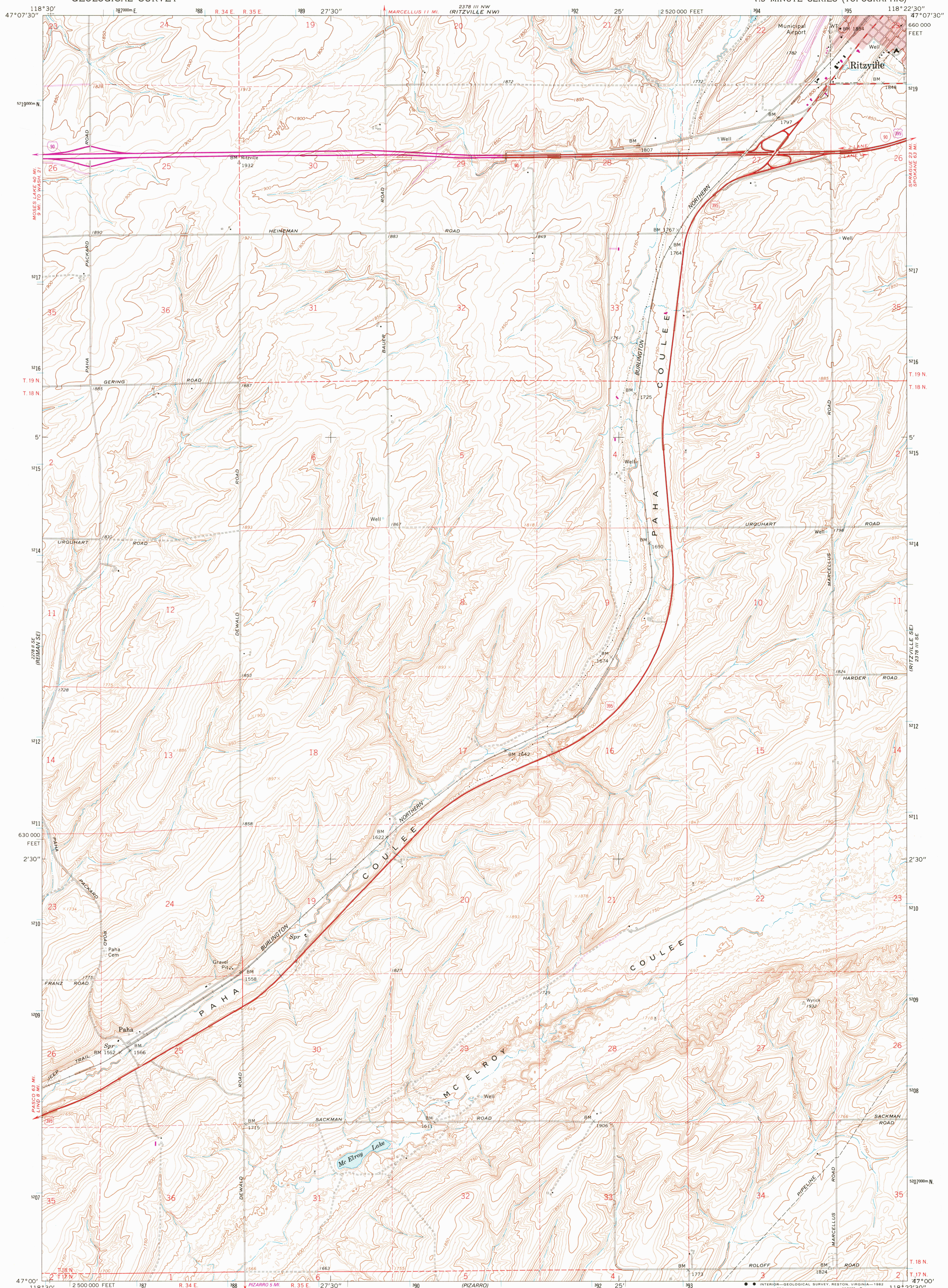


UNITED STATES  
DEPARTMENT OF THE INTERIOR  
GEOLOGICAL SURVEY

RITZVILLE SW QUADRANGLE  
WASHINGTON—ADAMS CO.  
7.5 MINUTE SERIES (TOPOGRAPHIC)



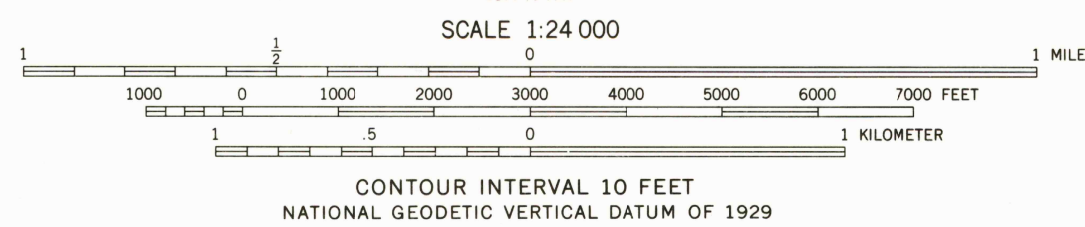
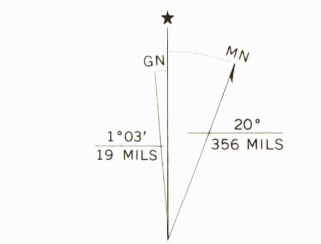
Mapped, edited, and published by the Geological Survey

Control by USGS and NCS/NOAA

Topography by photogrammetric methods from aerial photographs taken 1966. Field checked 1967

Polyconic projection. 1927 North American datum 10,000-foot grid based on Washington coordinate system, south zone 1000-meter Universal Transverse Mercator grid ticks, zone 11, shown in blue

To place on the predicted North American Datum 1983 move the projection lines 17 meters north and 83 meters east as shown by dashed corner ticks Red tint indicates areas in which only landmark buildings are shown Fine red dashed lines indicate selected fence lines



ROAD CLASSIFICATION			
Heavy-duty	Light-duty	Interstate Route	U. S. Route
Medium-duty	Unimproved dirt		

RITZVILLE SW, WASH.  
N4700—W1822.5/7.5

1967  
PHOTOREVISED 1982  
DMA 2378 III SW—SERIES V991

THIS MAP COMPLIES WITH NATIONAL MAP ACCURACY STANDARDS  
FOR SALE BY U. S. GEOLOGICAL SURVEY, DENVER, COLORADO 80225, OR RESTON, VIRGINIA 22092  
A FOLDER DESCRIBING TOPOGRAPHIC MAPS AND SYMBOLS IS AVAILABLE ON REQUEST

Revisions shown in purple compiled from aerial photographs taken 1979 and other source data. This information not field checked. Map edited 1982

RETURN TO:  
USGS AND HISTORICAL MAP ARCHIVES

MAY 26 1982  
2250