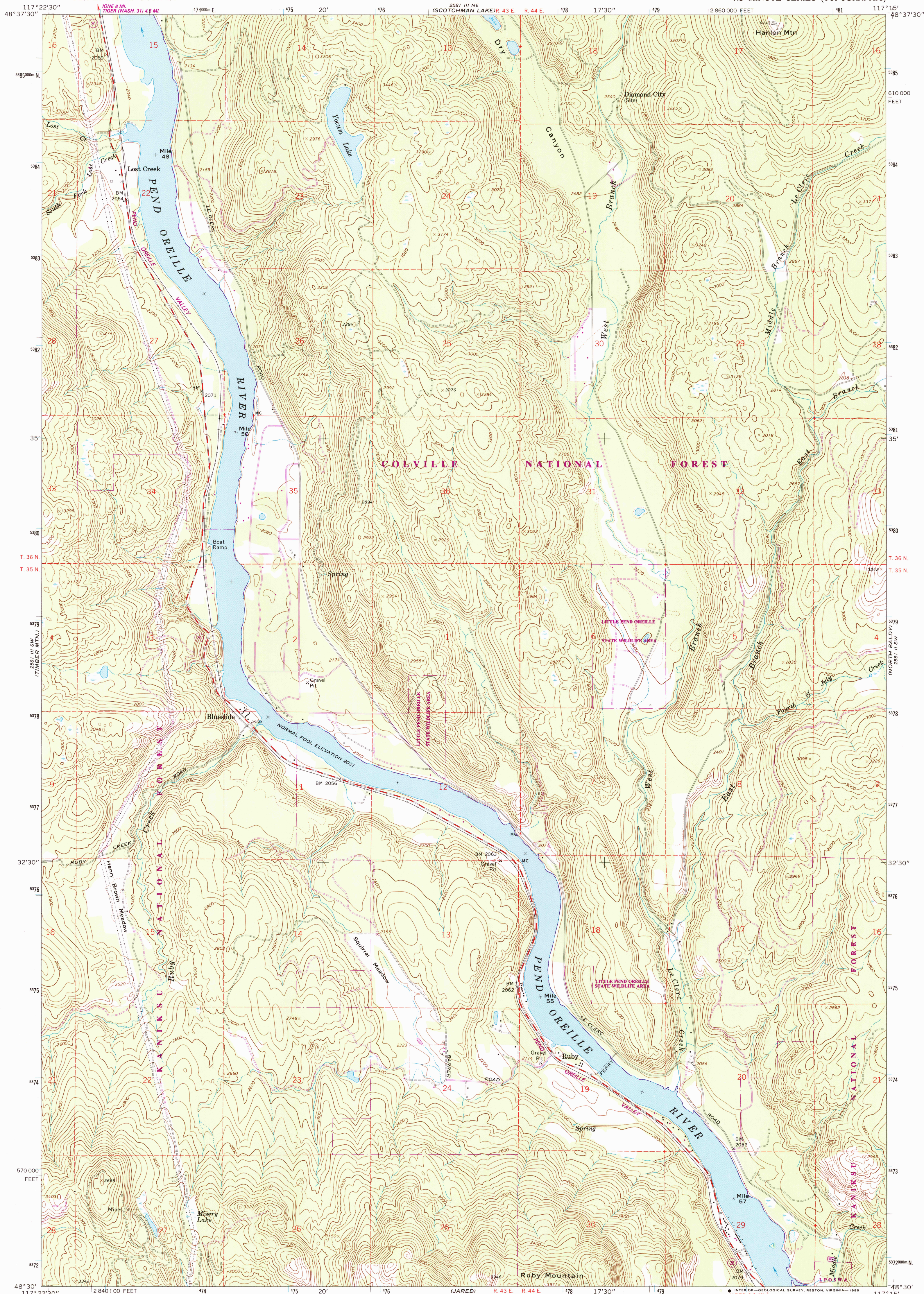


2581 III NW
(70)1/2

UNITED STATES
DEPARTMENT OF THE INTERIOR
GEOLOGICAL SURVEY

RUBY QUADRANGLE
WASHINGTON—PEND OREILLE CO.
7.5 MINUTE SERIES (TOPOGRAPHIC)

2581 III NW
(MONUMENTAL MTN.)



TCOMPA PEANU
2580 V NW

Mapped, edited, and published by the Geological Survey

Control by USGS and NOS/NOAA

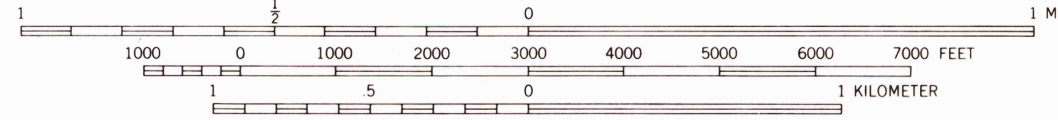
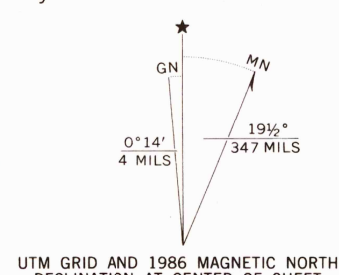
Topography by photogrammetric methods from aerial
photographs taken 1966. Field checked 1967

Polycyclic projection. 1927 North American Datum
10,000-foot grid based on Washington coordinate system,
north zone
1000-meter Universal Transverse Mercator grid ticks,
zone 11, shown in blue

Fine red dashed lines indicate selected fence lines

To place on the predicted North American Datum 1983
move the projection lines 14 meters north and
79 meters east as shown by dashed corner ticks

There may be private inholdings within the boundaries
of the National or State reservations shown on this map



CONTOUR INTERVAL 40 FEET
DOTTED LINES REPRESENT 20-FOOT CONTOURS
NATIONAL GEODETIC VERTICAL DATUM OF 1929

THIS MAP COMPLIES WITH NATIONAL MAP ACCURACY STANDARDS
FOR SALE BY U. S. GEOLOGICAL SURVEY
DENVER, COLORADO 80225, OR RESTON, VIRGINIA 22092
A FOLDER DESCRIBING TOPOGRAPHIC MAPS AND SYMBOLS IS AVAILABLE ON REQUEST



ROAD CLASSIFICATION
Medium-duty ——— Light-duty ———
Unimproved dirt - - - - - State Route

RUBY, WASH.
48117-E3-TF-024

1967
PHOTOREVISED 1986
DMA 2581 III SE—SERIES V891

