

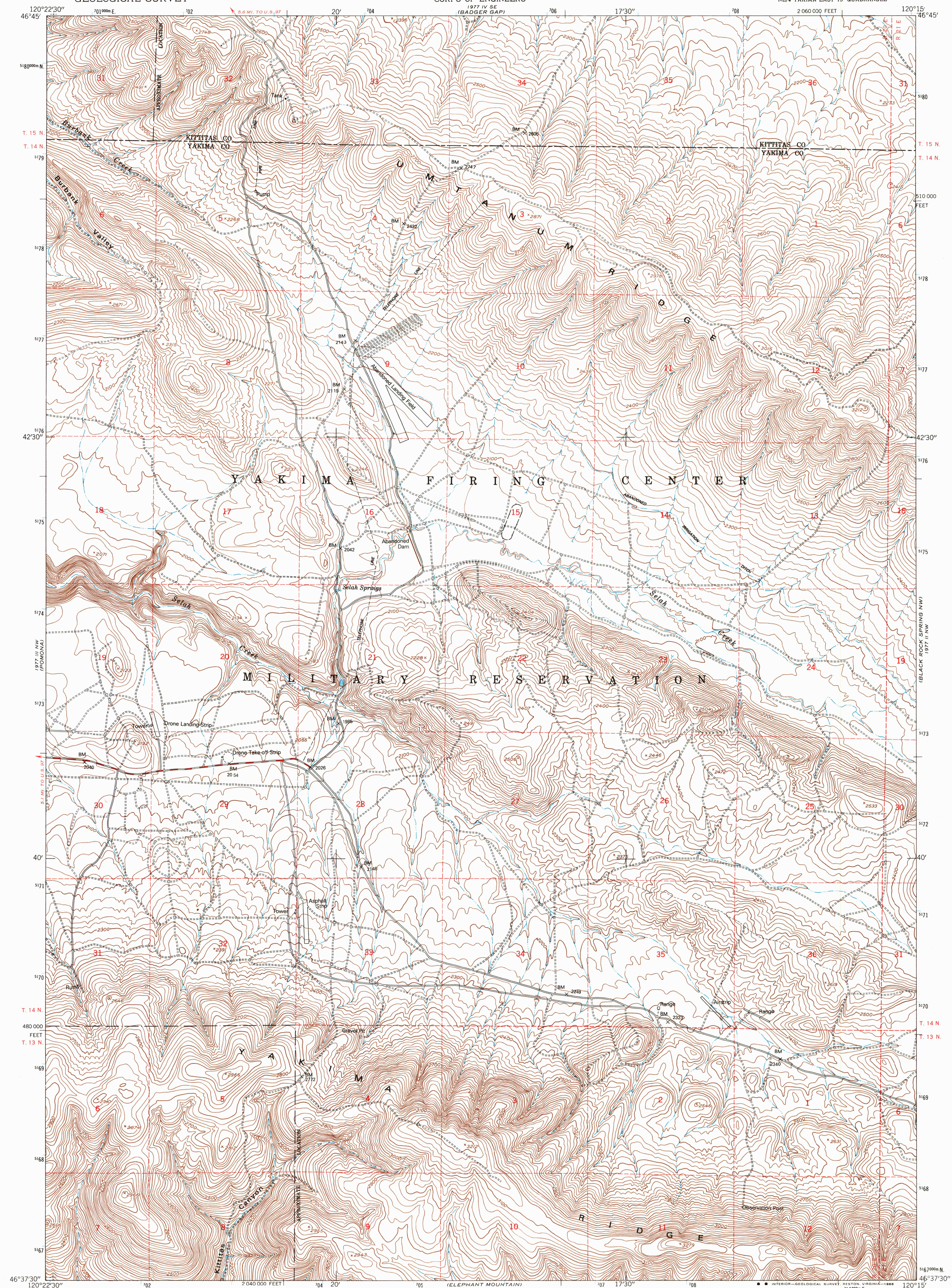
1977 IV SW
(WYMER)

UNITED STATES
DEPARTMENT OF THE INTERIOR
GEOLOGICAL SURVEY

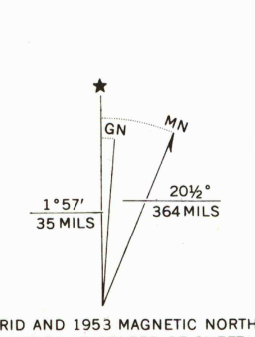
UNITED STATES
DEPARTMENT OF THE ARMY
CORPS OF ENGINEERS

SELAH SPRINGS QUADRANGLE
WASHINGTON
7.5 MINUTE SERIES (TOPOGRAPHIC)
NE/4 YAKIMA EAST 15' QUADRANGLE

1977 I SW
(MC DONALD SPRING)



Maped by the Army Map Service
Published for civil use by the Geological Survey
Control by USGS, USC&GS, and U. S. Bureau of Reclamation
Topography from aerial photographs by photogrammetric methods
Aerial photographs taken 1952. Field check 1953
Polyconic projection. 1927 North American datum
10,000-foot grid based on Washington coordinate system,
south zone
1000-meter Universal Transverse Mercator grid ticks,
zone 10, shown in blue
To place on the predicted North American Datum 1983
move the projection lines 20 meters north and
88 meters east as shown by dashed corner ticks
There may be private inholdings within the boundaries of
the National or State reservations shown on this map

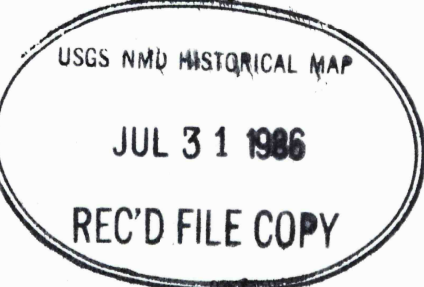


SCALE 1:24 000
1 0 1000 2000 3000 4000 5000 6000 7000 FEET
1 0.5 1 KILOMETER
CONTOUR INTERVAL 20 FEET
NATIONAL GEODETIC VERTICAL DATUM OF 1929



ROAD CLASSIFICATION
Medium-duty ——— Light-duty ———
Unimproved dirt =====

SELAH SPRINGS, WASH.
NE/4 YAKIMA EAST 15' QUADRANGLE
46120-F3-TF-024



DMA 1977 III NE-SERIES V891