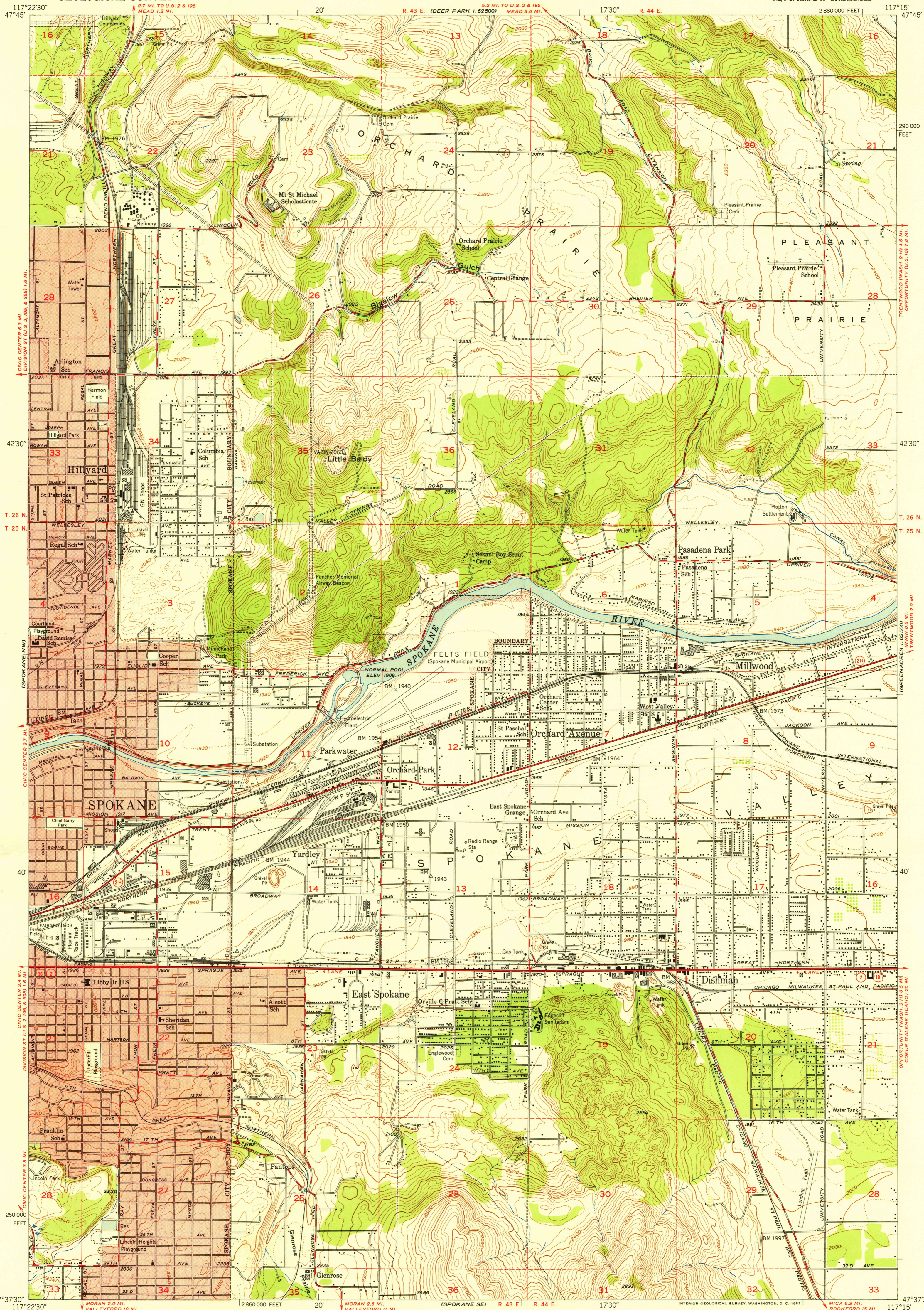


UNITED STATES  
DEPARTMENT OF THE INTERIOR  
GEOLOGICAL SURVEY

SPOKANE NE QUADRANGLE  
WASHINGTON-SPOKANE CO.  
7.5 MINUTE SERIES (TOPOGRAPHIC)  
NE/4 SPOKANE 15' QUADRANGLE



FILE COPY  
Imposition and Mailing

FILE COPY  
Imposition and Mailing

Maped, edited, and published by the Geological Survey  
Control by USGS and USC&GS  
Topography from aerial photographs by multiplex methods,  
and by plane-table surveys 1950. Aerial photographs taken 1946  
Polyconic projection. 1927 North American datum  
10,000-foot grid based on Washington coordinate system, north zone  
Red tint indicates area in which only  
landmark buildings are shown  
Dashed land lines indicate approximate locations

TRUE NORTH  
MAGNETIC NORTH  
APPROXIMATE MEAN  
DECLINATION, 1950

SCALE 1:24,000  
1 0 1000 2000 3000 4000 5000 6000 7000 FEET  
1 0 1 2 3 4 5 6 7 8 9 10 KILOMETER  
CONTOUR INTERVAL 20 FEET  
DOTTED LINES REPRESENT HALF-INTERVAL CONTOURS  
CONTOUR INTERVAL ON RIVER SURFACE 5 FEET  
DATUM IS MEAN SEA LEVEL

ROAD CLASSIFICATION  
Heavy-duty 4 LANE 6 LANE Light-duty  
Medium-duty 4 LANE 6 LANE Unimproved dirt  
U.S. Route State Route

SPOKANE NE, WASH.  
NE/4 SPOKANE 15' QUADRANGLE  
N4737.5-W11715/7.5

THIS MAP COMPLIES WITH NATIONAL MAP ACCURACY STANDARDS  
FOR SALE BY U. S. GEOLOGICAL SURVEY, FEDERAL CENTER, DENVER, COLORADO OR WASHINGTON 25, D. C.  
A FOLDER DESCRIBING TOPOGRAPHIC MAPS AND SYMBOLS IS AVAILABLE ON REQUEST

1950

USGS  
Historical File  
Topographic Division

067 2 1950 2/25