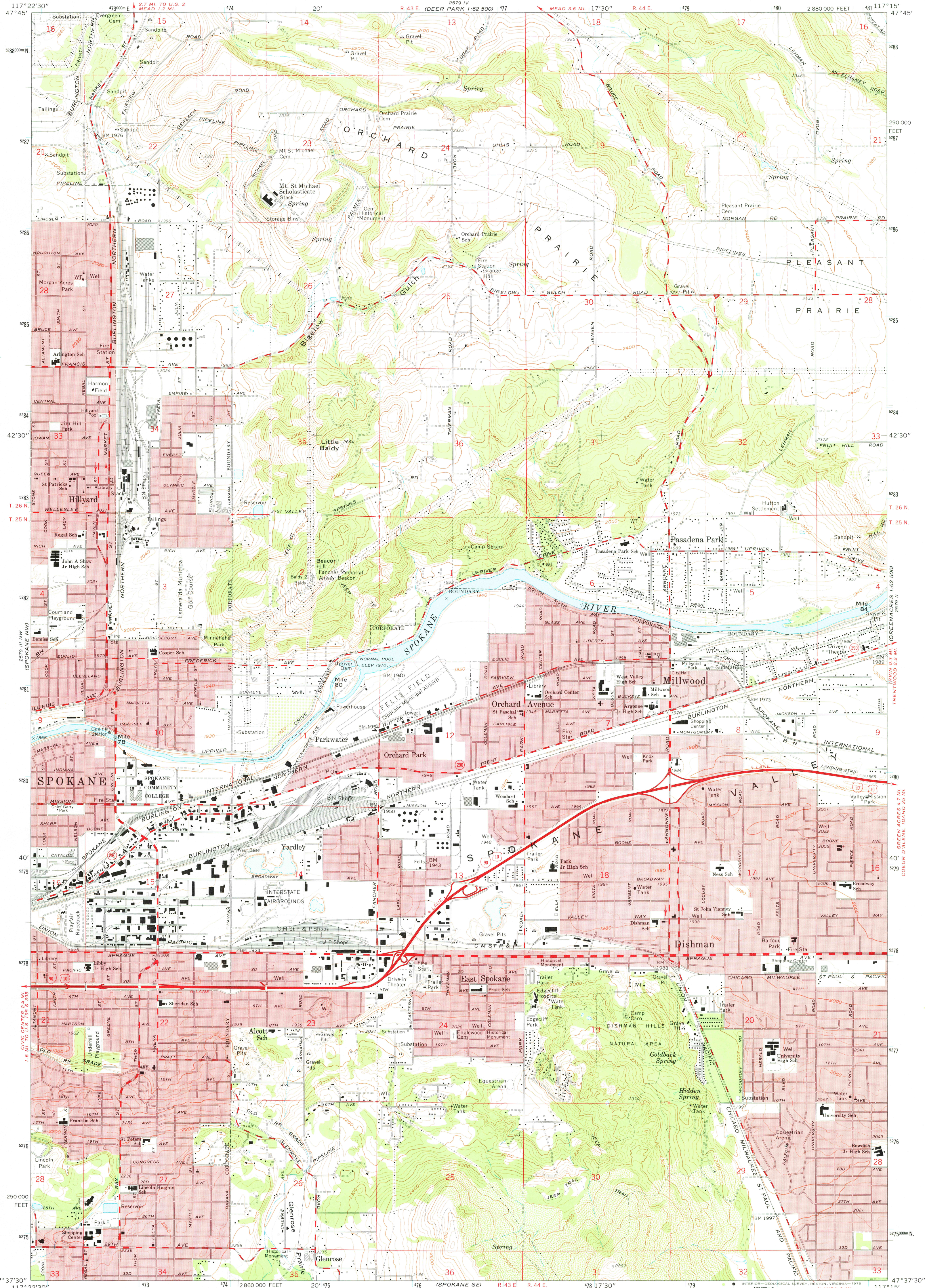


UNITED STATES
DEPARTMENT OF THE INTERIOR
GEOLOGICAL SURVEY

SPOKANE NE QUADRANGLE
WASHINGTON—SPOKANE CO.
7.5 MINUTE SERIES (TOPOGRAPHIC)
NE/4 SPOKANE 15' QUADRANGLE



Maped, edited, and published by the Geological Survey
Control by USGS and NOS/NOAA

Topography by photogrammetric methods from aerial photographs
taken 1946 and planimetric surveys 1950. Revised from aerial
photographs taken 1972. Field checked 1973

Projection and 10,000-foot grid ticks: Washington coordinate
system, north zone (Lambert conformal conic)
1000-meter Universal Transverse Mercator grid ticks,
zone 11, shown in blue. 1927 North American datum
Red tint indicates areas in which only landmark buildings
are shown

Fine red dashed lines indicate selected fence lines

THIS MAP COMPLIES WITH NATIONAL MAP ACCURACY STANDARDS
FOR SALE BY U.S. GEOLOGICAL SURVEY, DENVER, COLORADO 80225, OR RESTON, VIRGINIA 22092
A FOLDER DESCRIBING TOPOGRAPHIC MAPS AND SYMBOLS IS AVAILABLE ON REQUEST

ROAD CLASSIFICATION
Primary highway, hard surface
Secondary highway, hard surface
Light duty road, hard or improved surface
Unimproved road
Interstate Route
U.S. Route
State Route

SPOKANE NE, WASH.
NE/4 SPOKANE 15' QUADRANGLE
N4737.5—W11715.7.5

1973
AMS 2579 III NE—SERIES V891

APR 14 1975