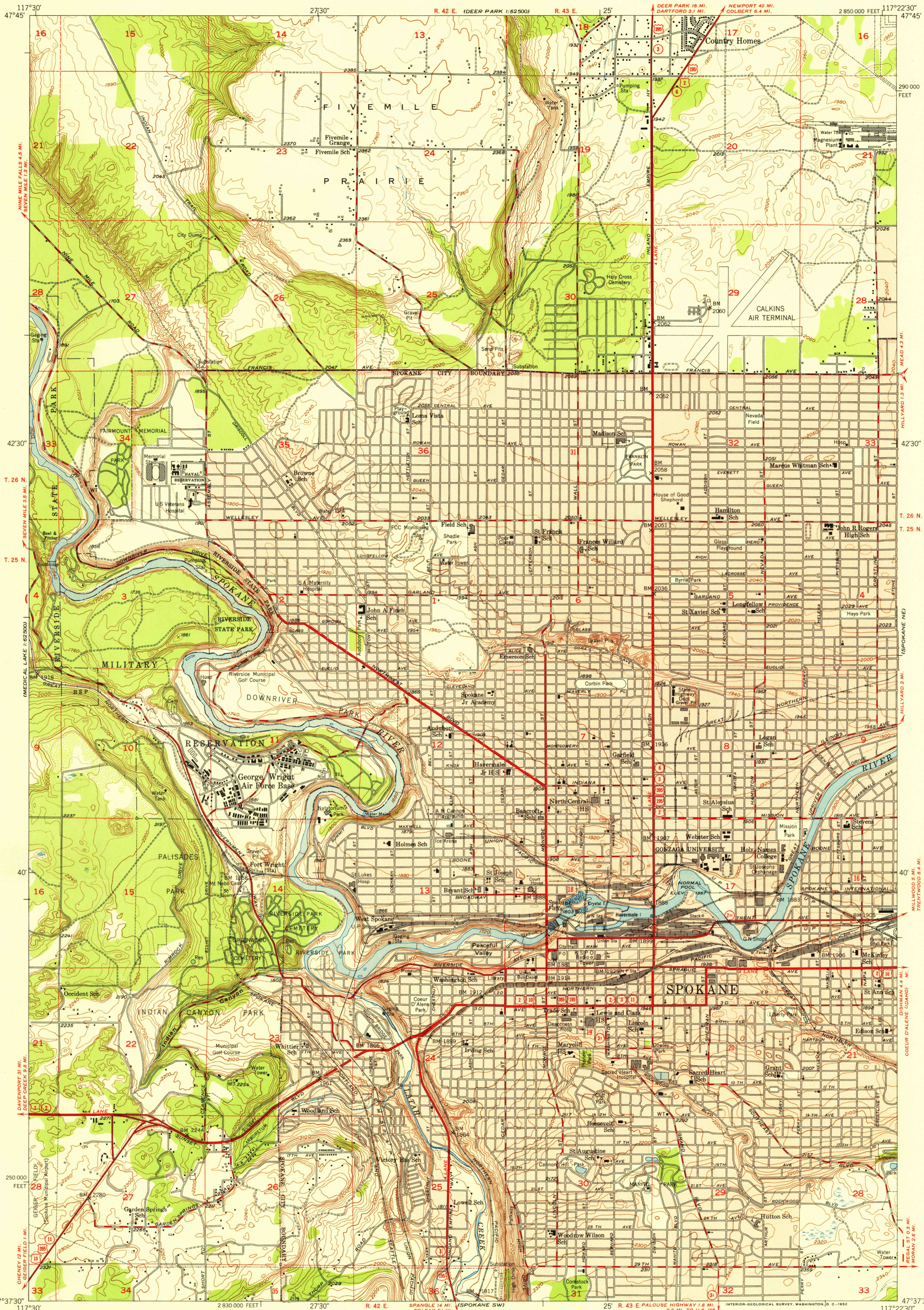
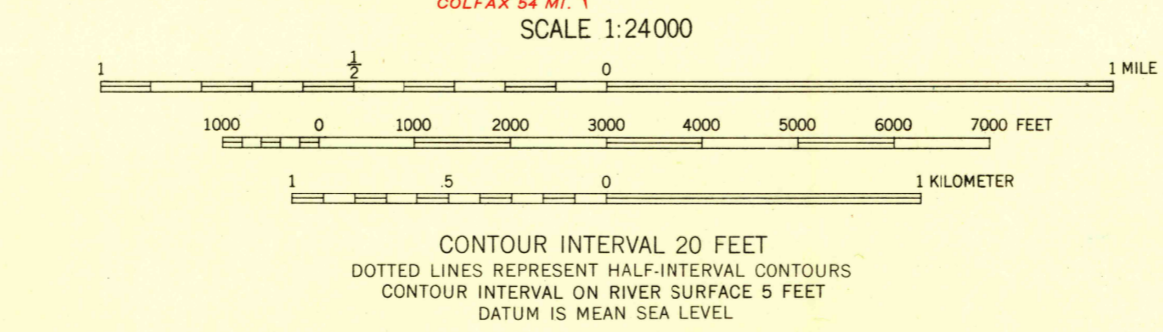
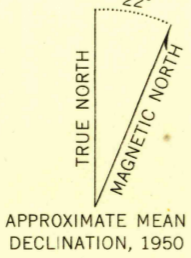


UNITED STATES  
DEPARTMENT OF THE INTERIOR  
GEOLOGICAL SURVEY

SPOKANE NW QUADRANGLE  
WASHINGTON-SPOKANE CO.  
7.5 MINUTE SERIES (TOPOGRAPHIC)  
NW/4 SPOKANE 15' QUADRANGLE



Mapped, edited, and published by the Geological Survey  
Control by USGS and USC&GS  
Topography from aerial photographs by multiplex methods  
and by plane-table surveys 1950. Aerial photographs taken 1946  
Polyconic projection. 1927 North American datum  
10,000-foot grid based on Washington coordinate system, north zone  
Red tint indicates area in which only  
landmark buildings are shown  
Dashed land lines indicate approximate locations



ROAD CLASSIFICATION  
Heavy-duty 4 LANE 6 LANE Light-duty  
Medium-duty 4 LANE 6 LANE Unimproved dirt  
U.S. Route State Route

SPOKANE NW, WASH.  
NW/4 SPOKANE 15' QUADRANGLE  
N4737.5-W11722.5/7.5

THIS MAP COMPLIES WITH NATIONAL MAP ACCURACY STANDARDS  
FOR SALE BY U.S. GEOLOGICAL SURVEY, FEDERAL CENTER, DENVER, COLORADO OR WASHINGTON 25, D. C.  
A FOLDER DESCRIBING TOPOGRAPHIC MAPS AND SYMBOLS IS AVAILABLE ON REQUEST

1950

USGS  
Historical File  
Topographic Division

OCT 2 1952