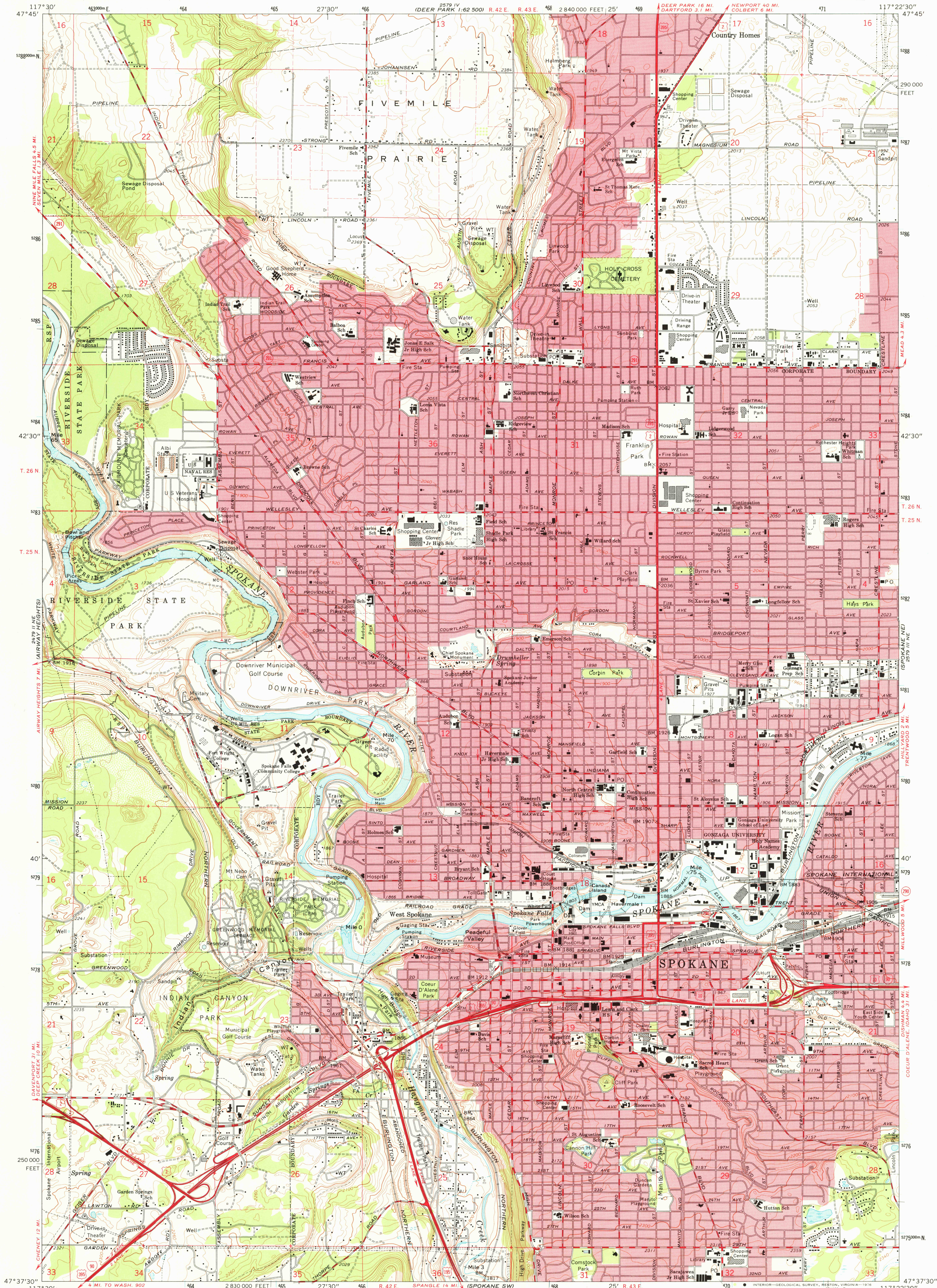


UNITED STATES
DEPARTMENT OF THE INTERIOR
GEOLOGICAL SURVEY

SPOKANE NW QUADRANGLE
WASHINGTON-SPOKANE CO.
7.5 MINUTE SERIES (TOPOGRAPHIC)

NW/4 SPOKANE 15' QUADRANGLE



Mapped, edited, and published by the Geological Survey

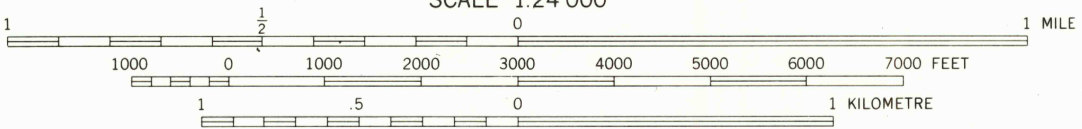
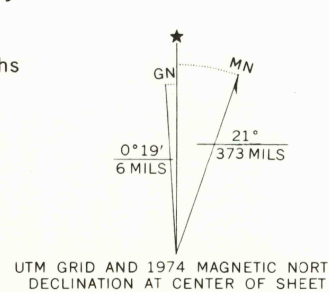
Control by USGS and NOS/NOAA

Topography by photogrammetric methods from aerial photographs taken 1946 and planetable surveys 1950. Revised from aerial photographs taken 1972. Field checked 1974

Projection and 10,000-foot grid ticks: Washington coordinate system, north zone (Lambert conformal conic) 1000-metre Universal Transverse Mercator grid ticks, zone 11, shown in blue. 1927 North American datum

Red tint indicates areas in which only landmark buildings are shown

Fine red dashed lines indicate selected fence lines



CONTOUR INTERVAL 20 FEET
DOTTED LINES REPRESENT 10-FOOT CONTOURS
DOTTED LINES CROSSING RIVERS REPRESENT 5-FOOT CONTOURS
NATIONAL GEODETIC VERTICAL DATUM OF 1929

THIS MAP COMPLIES WITH NATIONAL MAP ACCURACY STANDARDS
FOR SALE BY U.S. GEOLOGICAL SURVEY, DENVER, COLORADO 80225, OR RESTON, VIRGINIA 22092
A FOLDER DESCRIBING TOPOGRAPHIC MAPS AND SYMBOLS IS AVAILABLE ON REQUEST



SPOKANE NW, WASH.
NW/4 SPOKANE 15' QUADRANGLE
N4737.5-W11722.5/7.5

USGS
Historical File
Topographic Division

APR 09 1976