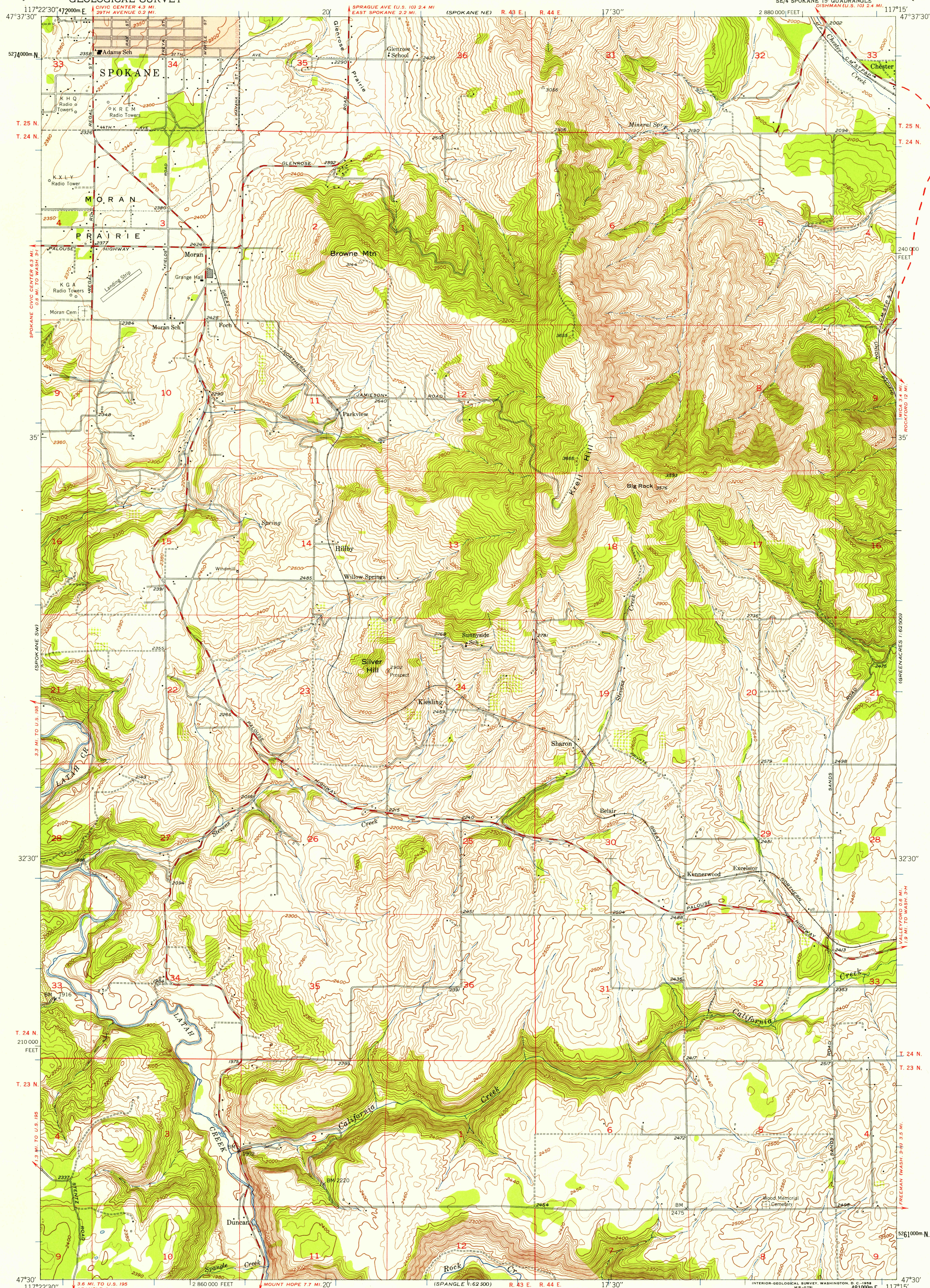


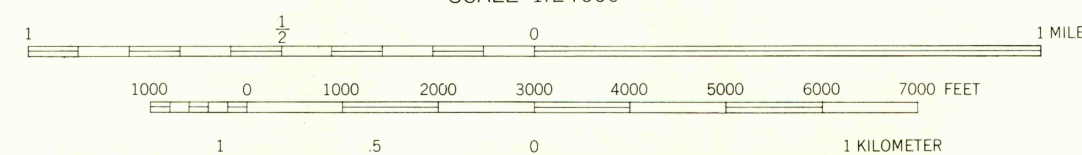
UNITED STATES
DEPARTMENT OF THE INTERIOR
GEOLOGICAL SURVEY

SPOKANE SE QUADRANGLE
WASHINGTON-SPOKANE CO.
7.5 MINUTE SERIES (TOPOGRAPHIC)
SE 1/4 SPOKANE 19' QUADRANGLE
DISHMAN (U.S. 101 2.4 MI.)



Mapped, edited, and published by the Geological Survey
Control by USGS and USC&GS
Topography from aerial photographs by multiplex methods
Aerial photographs taken 1946. Field check 1950
Polyconic projection. 1927 North American datum
10,000-foot grid based on Washington coordinate system, north zone
Dashed land lines indicate approximate locations
Red tint indicates area in which only
landmark buildings are shown
1000-meter Universal Transverse Mercator grid ticks,
zone 11, shown in blue

TRUE NORTH
MAGNETIC NORTH
APPROXIMATE MEAN
DECLINATION, 1950



CONTOUR INTERVAL 20 FEET
DOTTED LINES REPRESENT HALF-INTERVAL CONTOURS
DATUM IS MEAN SEA LEVEL

THIS MAP COMPLIES WITH NATIONAL MAP ACCURACY STANDARDS
FOR SALE BY U. S. GEOLOGICAL SURVEY, FEDERAL CENTER, DENVER, COLORADO OR WASHINGTON 25, D. C.
A FOLDER DESCRIBING TOPOGRAPHIC MAPS AND SYMBOLS IS AVAILABLE ON REQUEST

ROAD CLASSIFICATION
Heavy-duty 4 LANE 16 LANE Light-duty
Medium-duty 4 LANE 16 LANE Unimproved dirt
U. S. Route State Route

SPOKANE SE, WASH.
SE 1/4 SPOKANE 19' QUADRANGLE
N4730-W11715/7.5

1950

U.S.G.S.
FILE COPY
TOPOGRAPHIC DIVISION
USGS
Historical File
Topographic Division

JAN -7 1958

2420