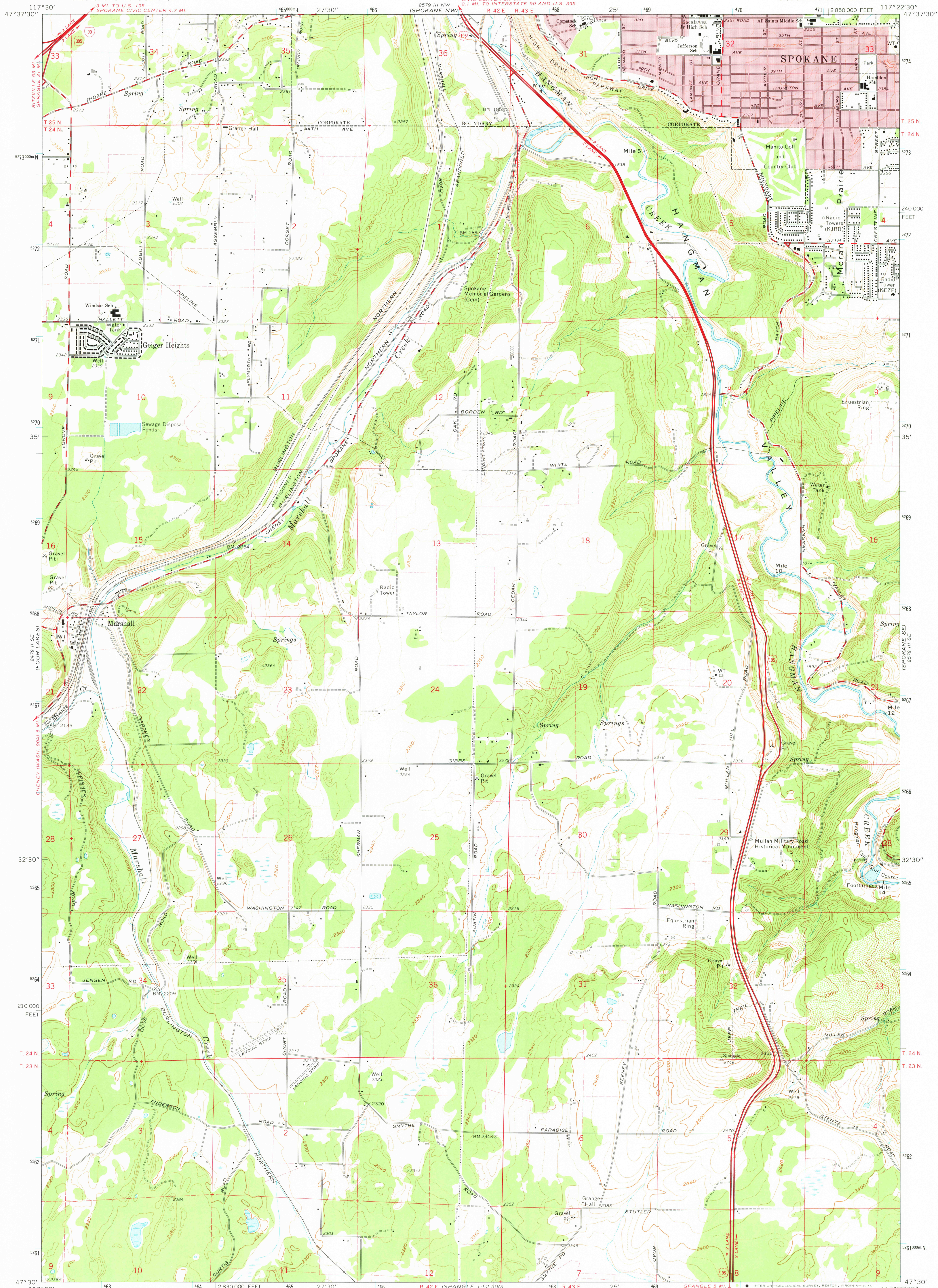


UNITED STATES
DEPARTMENT OF THE INTERIOR
GEOLOGICAL SURVEY

SPOKANE SW QUADRANGLE
WASHINGTON-SPOKANE CO.
7.5 MINUTE SERIES (TOPOGRAPHIC)
SW/4 SPOKANE 15' QUADRANGLE



Mapped, edited, and published by the Geological Survey

Control by USGS and NOS/NOAA

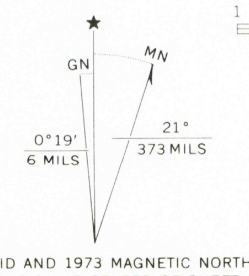
Topography by photogrammetric methods from aerial photographs taken 1946 and planetable surveys 1950. Revised from aerial photographs taken 1972. Field checked 1973

Projection and 10,000-foot grid ticks: Washington coordinate system, north zone (Lambert conformal conic)

1000-metre Universal Transverse Mercator grid ticks, zone 11, shown in blue. 1927 North American datum

Red tint indicates area in which only landmark buildings are shown

Fine red dashed lines indicate selected fence lines



SCALE 1:24 000

CONTOUR INTERVAL 20 FEET

DOILED LINES REPRESENT 10-FOOT CONTOURS

NATIONAL GEODETIC VERTICAL DATUM OF 1929

THIS MAP COMPLIES WITH NATIONAL MAP ACCURACY STANDARDS

FOR SALE BY U. S. GEOLOGICAL SURVEY, DENVER, COLORADO 80225, OR RESTON, VIRGINIA 22092

A FOLDER DESCRIBING TOPOGRAPHIC MAPS AND SYMBOLS IS AVAILABLE ON REQUEST



QUADRANGLE LOCATION

ROAD CLASSIFICATION	
Primary highway, hard surface	Light-duty road, hard or improved surface
Secondary highway, hard surface	Unimproved road
Interstate Route	U. S. Route
	State Route

SPOKANE SW, WASH.
SW/4 SPOKANE 15' QUADRANGLE
N4730-W11722.5/7.5

1973

AMS 2579 III SW-SERIES V891

SEP 30 1975

3/15