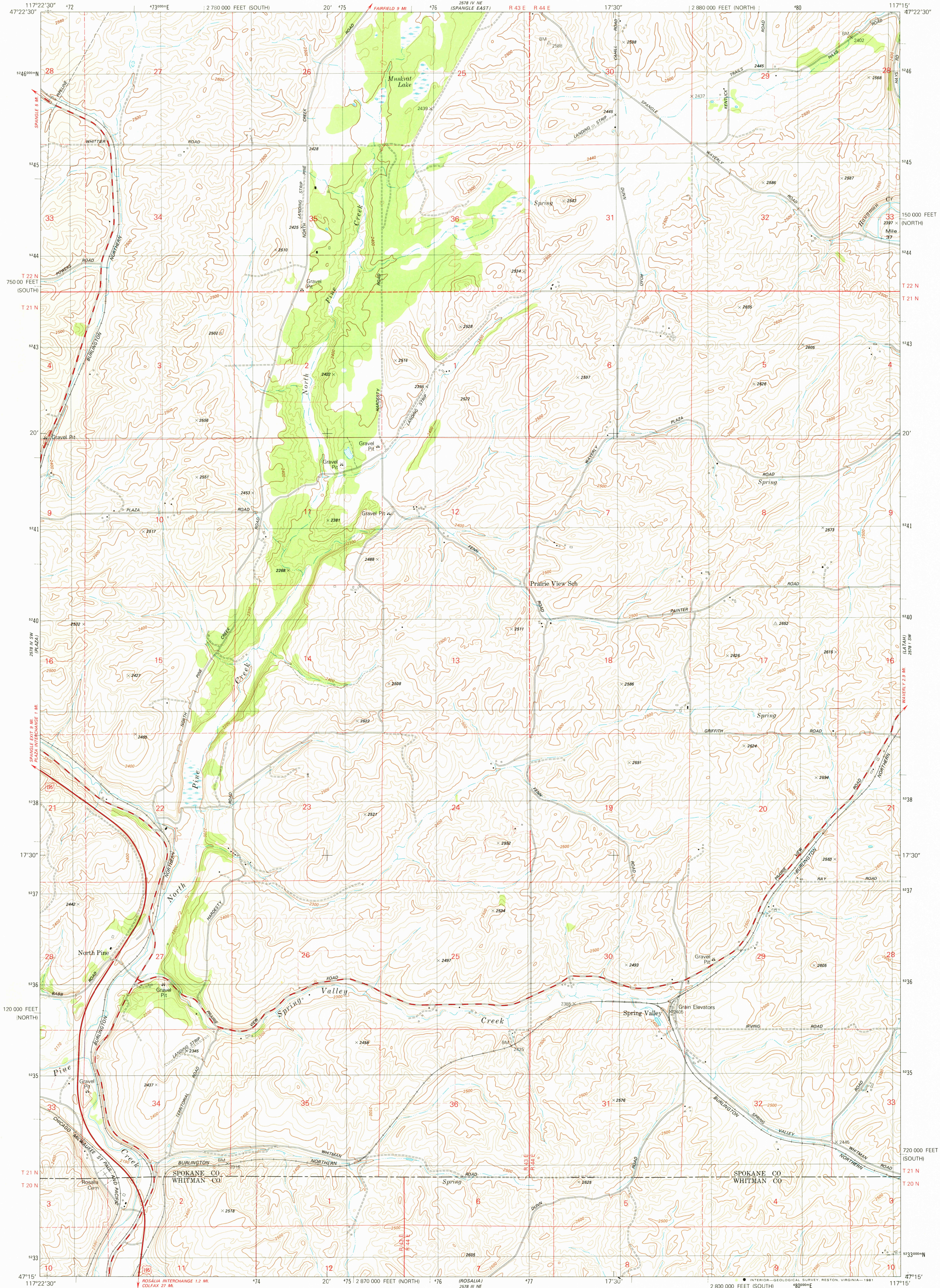


2578 IV NW
(SPANGLE E. WEST)

UNITED STATES
DEPARTMENT OF THE INTERIOR
GEOLOGICAL SURVEY

SPRING VALLEY QUADRANGLE
WASHINGTON
7.5 MINUTE SERIES (TOPOGRAPHIC)
SE/4 SPANGLE 15' QUADRANGLE

2578 IV NW
(FAIRFIELD)



Mapped, edited, and published by the Geological Survey

Control by USGS and NOS/NOAA

Topography by photogrammetric methods from aerial
photographs taken 1952. Field checked 1954
Revised from aerial photographs taken 1975
Limited field check 1976. Map edited 1980

Projection: Washington coordinate system, north zone

(Lambert conformal conic)

10,000-foot grid ticks based on Washington coordinate system,

north and south zones

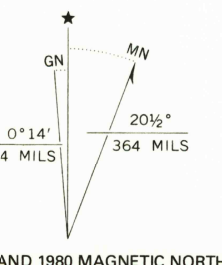
1000-meter Universal Transverse Mercator grid, zone 11

1927 North American Datum

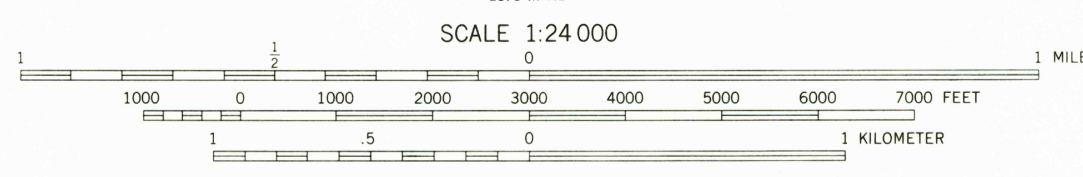
To place on the predicted North American Datum 1983

move the projection lines 15 meters north and

79 meters east as shown by dashed corner ticks



UTM GRID AND 1980 MAGNETIC NORTH
DECLINATION AT CENTER OF SHEET



SCALE 1:24,000
CONTOUR INTERVAL 20 FEET
SUPPLEMENTARY CONTOUR INTERVAL 10 FEET
NATIONAL GEODETIC VERTICAL DATUM OF 1929



QUADRANGLE LOCATION

ROAD CLASSIFICATION	
Primary highway, hard surface	Light-duty road, hard or improved surface
Secondary highway, hard surface	Unimproved road
Interstate Route	U. S. Route
	State Route

SPRING VALLEY, WASH.
SE/4 SPANGLE 15' QUADRANGLE
N4715-W11715/7.5

1980

DMA 2578 IV SE--SERIES V891

USGS
Historical File
National Mapping Div.

2000
MAR 12 1981