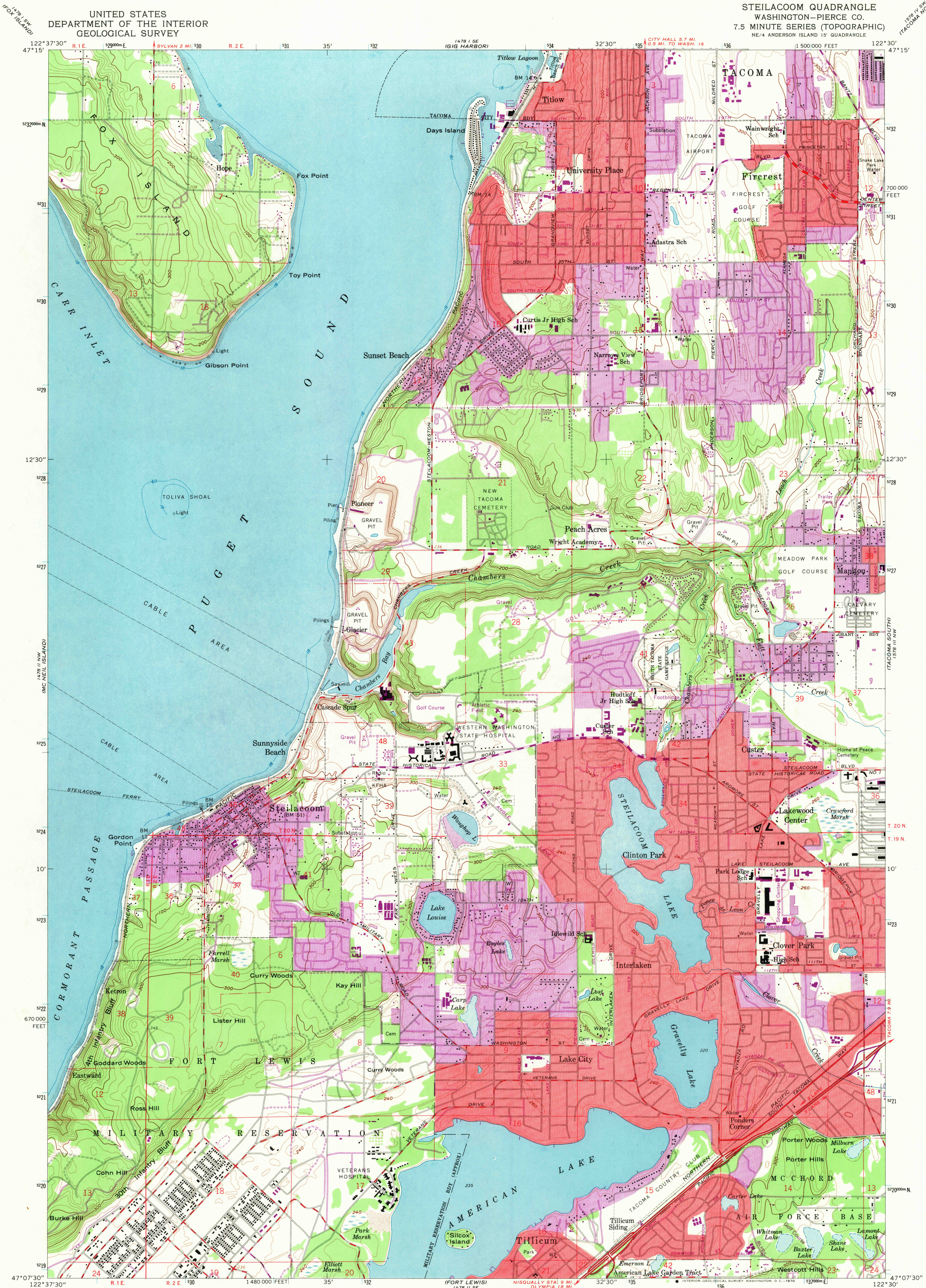
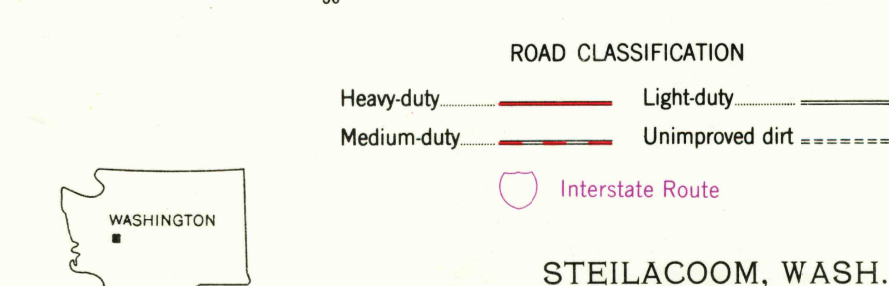
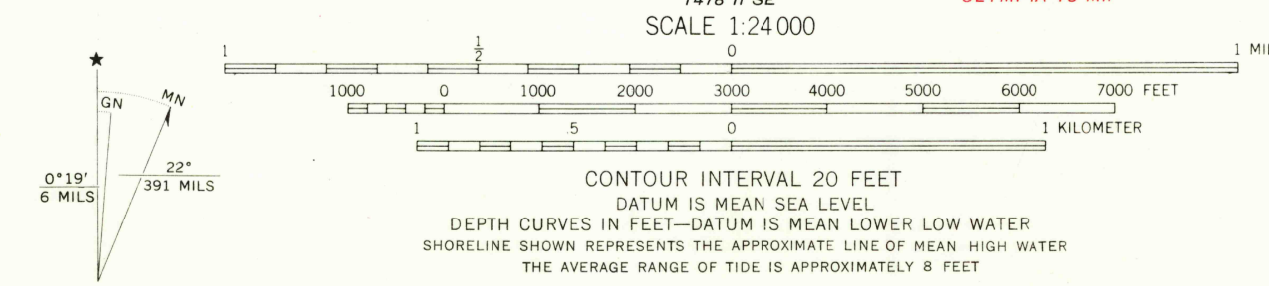


UNITED STATES
DEPARTMENT OF THE INTERIOR
GEOLOGICAL SURVEY

STEILACOOM QUADRANGLE
WASHINGTON—PIERCE CO.
7.5 MINUTE SERIES (TOPOGRAPHIC)
NE/4 ANDERSON ISLAND 15' QUADRANGLE



Mapped by the Army Map Service
Edited and published by the Geological Survey
Control by USGS, USC&GS and USCE
Topography from aerial photographs by photogrammetric methods
Aerial photographs taken 1947. Revised by the Geological Survey 1959.
Hydrography compiled from USC&GS chart 6460 (1958)
Polyconic projection. 1927 North American datum
10,000-foot grid based on Washington coordinate system,
south zone
1000-meter Universal Transverse Mercator grid ticks,
zone 10, shown in blue
Red tint indicates areas in which only landmark buildings are shown
Revisions shown in purple compiled by the Geological Survey from
aerial photographs taken 1968. This information not field checked
Purple tint indicates extension of urban areas



STEILACOOM, WASH.
NE/4 ANDERSON ISLAND 15' QUADRANGLE
N4707.5—W12230/7.5
1959
PHOTOGRAPHED 1968
AMS 1478 II NE—SERIES V891

U.S.G.S.
FILE COPY
TOPOGRAPHIC DIVISION

3680
JAN 13 1970