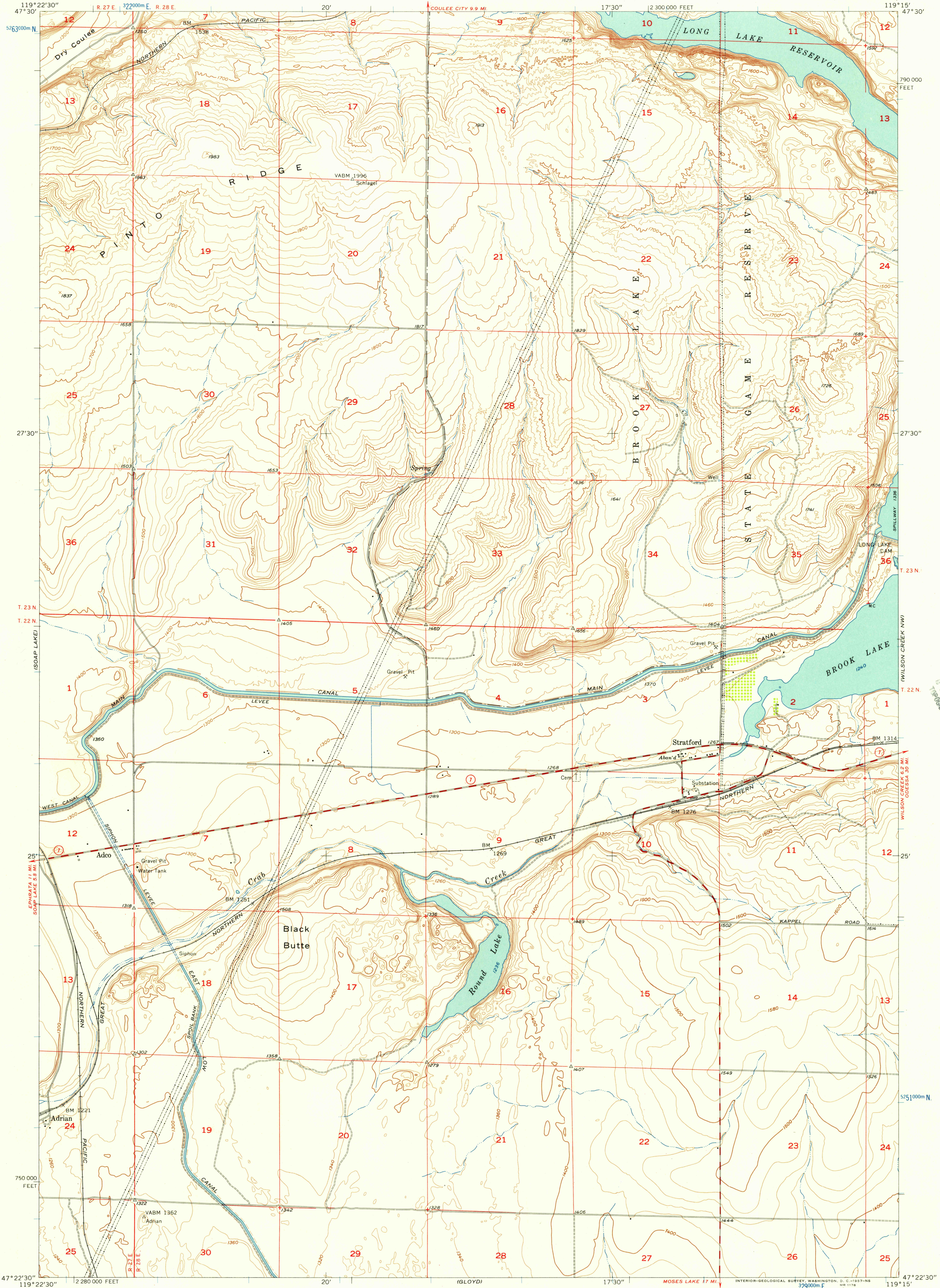
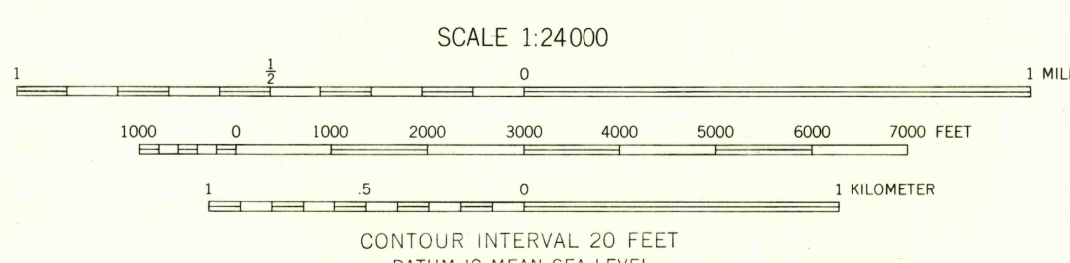
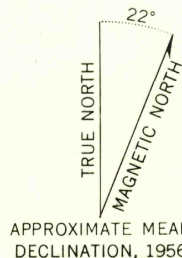


UNITED STATES  
DEPARTMENT OF THE INTERIOR  
GEOLOGICAL SURVEY

STRATFORD QUADRANGLE  
WASHINGTON—GRANT CO.  
7.5 MINUTE SERIES (TOPOGRAPHIC)



Maped, edited, and published by the Geological Survey  
Control by USGS, USC&GS, and USBR  
Topography from planetable surveys by USBR 1937  
and from aerial photographs by multiplex methods  
Aerial photographs taken 1954. Field check 1956  
Polyconic projection. 1927 North American datum  
10,000-foot grid based on Washington coordinate system,  
south zone  
1000-meter Universal Transverse Mercator grid ticks,  
zone 11, shown in blue



CONTOUR INTERVAL 20 FEET  
DATUM IS MEAN SEA LEVEL



ROAD CLASSIFICATION  
Medium-duty ——— Light-duty ———  
Unimproved dirt ———  
○ State Route

USGS STRATFORD, WASH.  
Historical File N4722.5—W11915/7.5  
Topographic Division 1956

U.S.G.S.  
TOPOGRAPHIC DIVISION  
FILE COPY

U.S.G.S.  
TOPOGRAPHIC DIVISION  
FILE COPY

DEC 20 1957  
1860