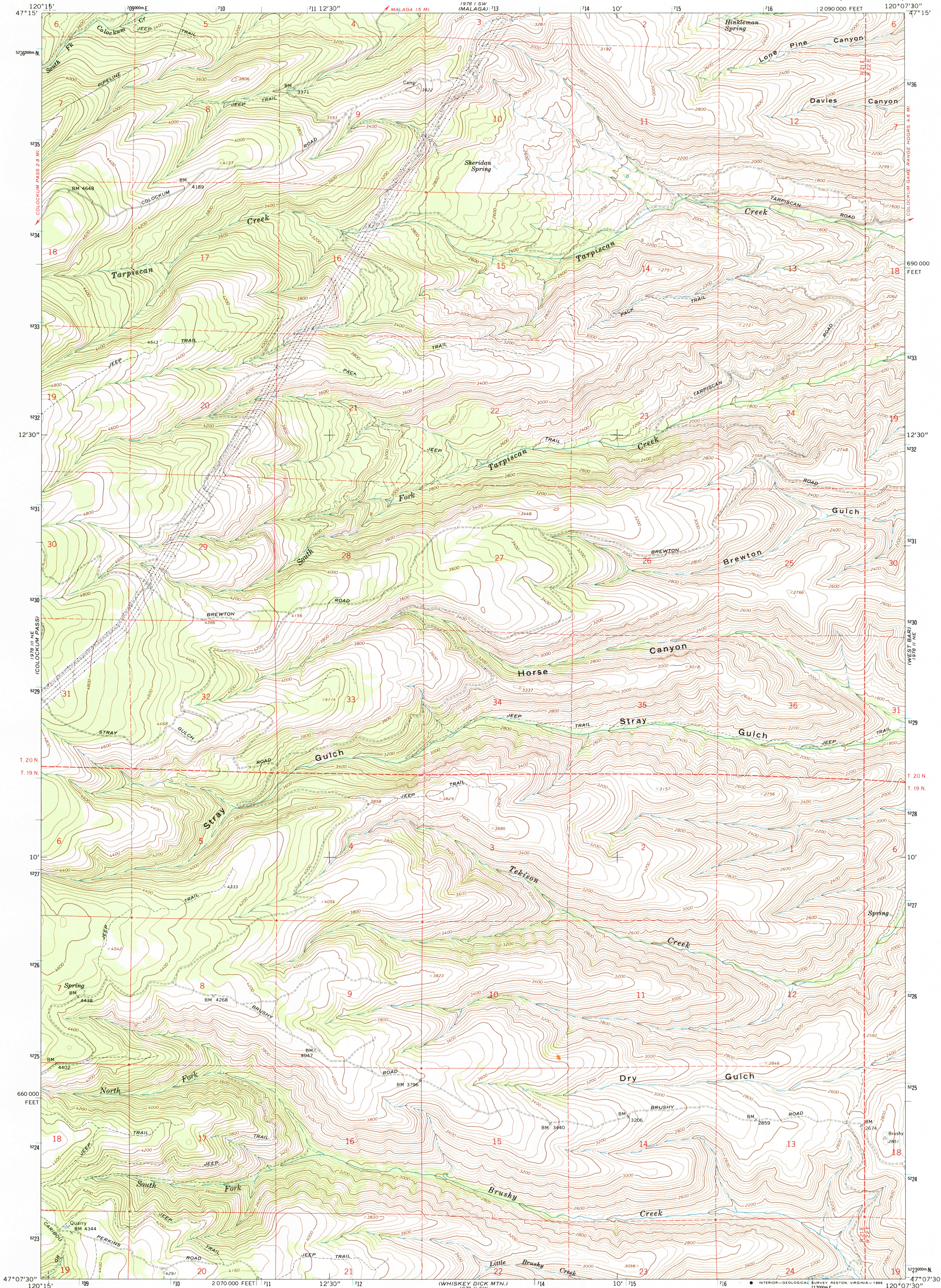


UNITED STATES
DEPARTMENT OF THE INTERIOR
GEOLOGICAL SURVEY

STRAY GULCH QUADRANGLE
WASHINGTON—KITITAS CO.
7.5 MINUTE SERIES (TOPOGRAPHIC)



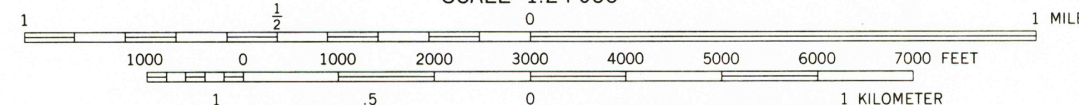
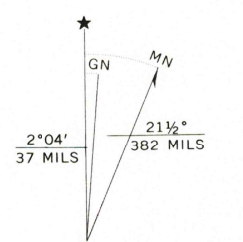
Mapped, edited, and published by the Geological Survey

Control by USGS, USC&GS, and USCE

Topography by photogrammetric methods from aerial
photographs taken 1964. Field checked 1966

Polyconic projection. 1927 North American datum
10,000-foot grid based on Washington coordinate system,
south zone
1000-meter Universal Transverse Mercator grid ticks,
zone 10, shown in blue

To place on the predicted North American Datum 1983
move the projection lines 20 meters north and
88 meters east as shown by dashed corner ticks



CONTOUR INTERVAL 40 FEET
NATIONAL GEODETIC DATUM OF 1929



ROAD CLASSIFICATION
Light-duty ————— Unimproved dirt —————

STRAY GULCH, WASH.
47120-B2-TF-024

1966

DMA 1978 II NW-SERIES 989 I

USGS NMD HISTORICAL MAP

JUL 08 1986

REC'D FILE COPY