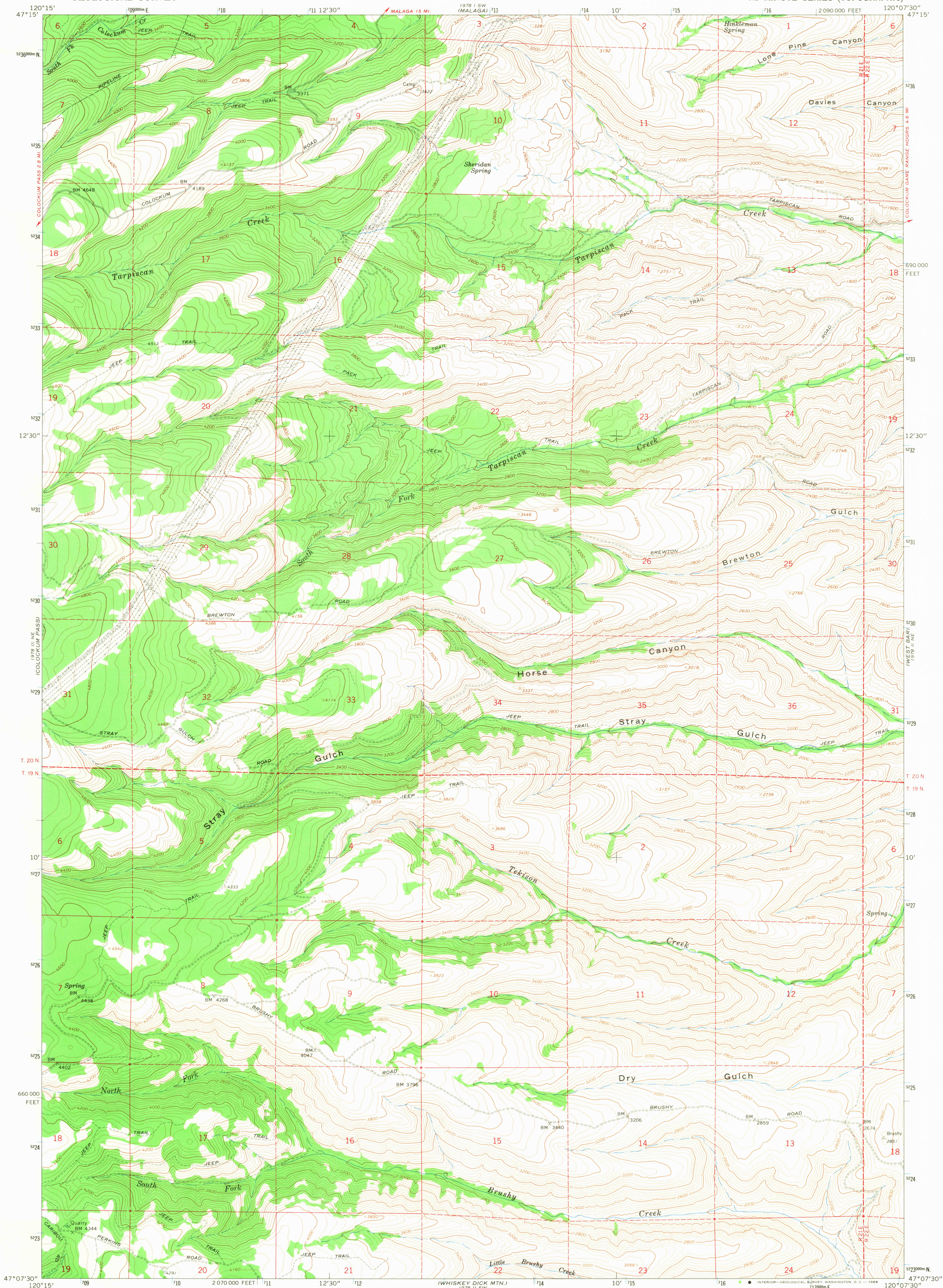
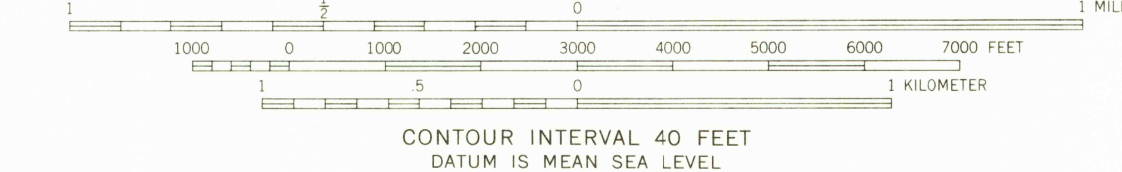
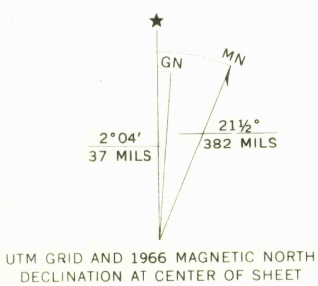


UNITED STATES
DEPARTMENT OF THE INTERIOR
GEOLOGICAL SURVEY

STRAY GULCH QUADRANGLE
WASHINGTON—KITITAS CO.
7.5 MINUTE SERIES (TOPOGRAPHIC)



Mapped, edited, and published by the Geological Survey
Control by USGS, USC&GS, and USCE
Topography by photogrammetric methods from aerial
photographs taken 1964. Field checked 1966
Polyconic projection. 1927 North American datum
10,000-foot grid based on Washington coordinate system,
south zone
1000-meter Universal Transverse Mercator grid ticks,
zone 10, shown in blue



ROAD CLASSIFICATION
Light-duty ————— Unimproved dirt —————

STRAY GULCH, WASH.
N4707.5—W12007.5/7.5

USGS
Historical File
Topographic Division

1966

AMS 1978 II NW—SERIES V891

U.S.G.S.
FILE COPY
TOPOGRAPHIC DIVISION

2905
AUG 12 1966