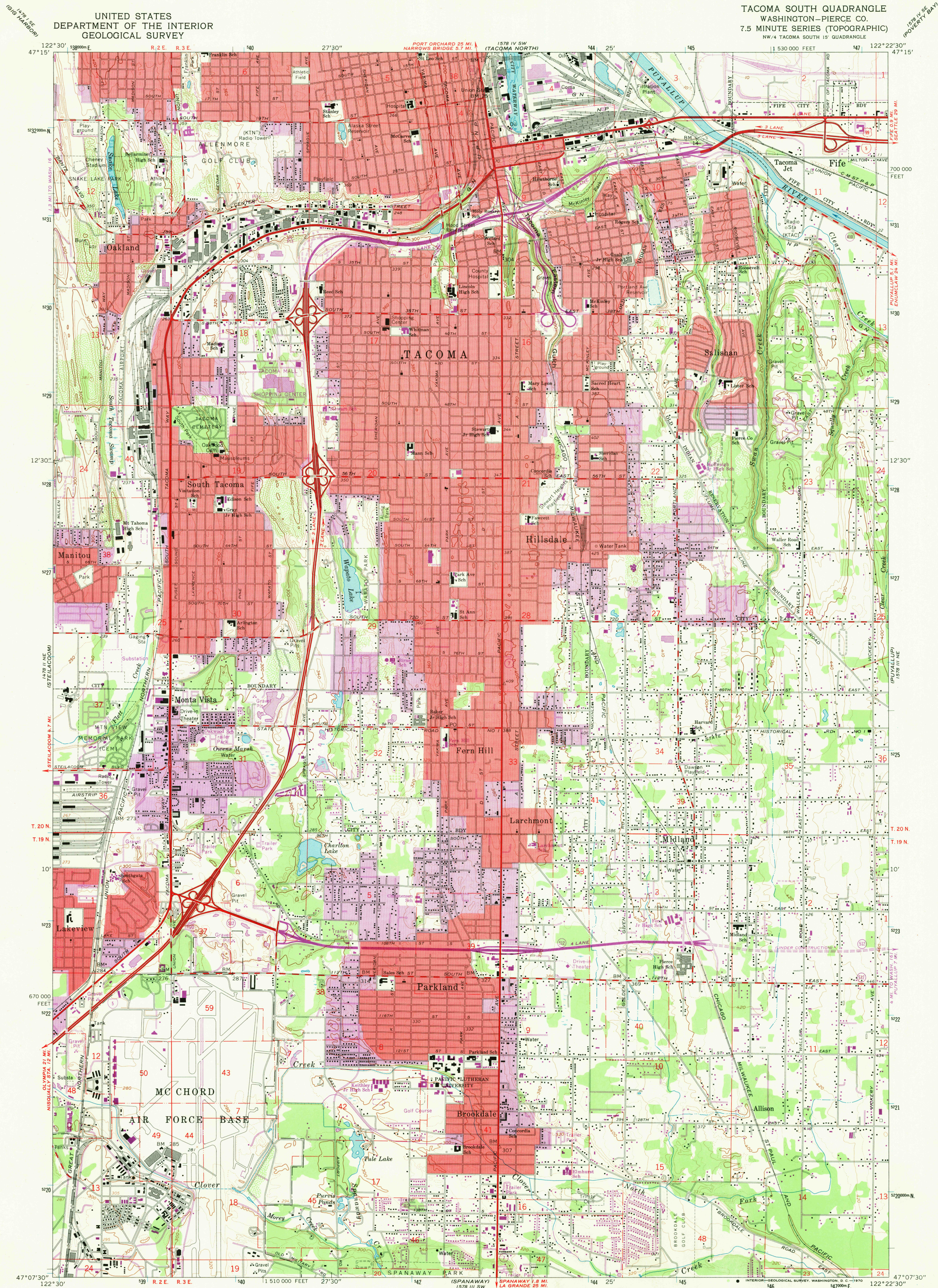
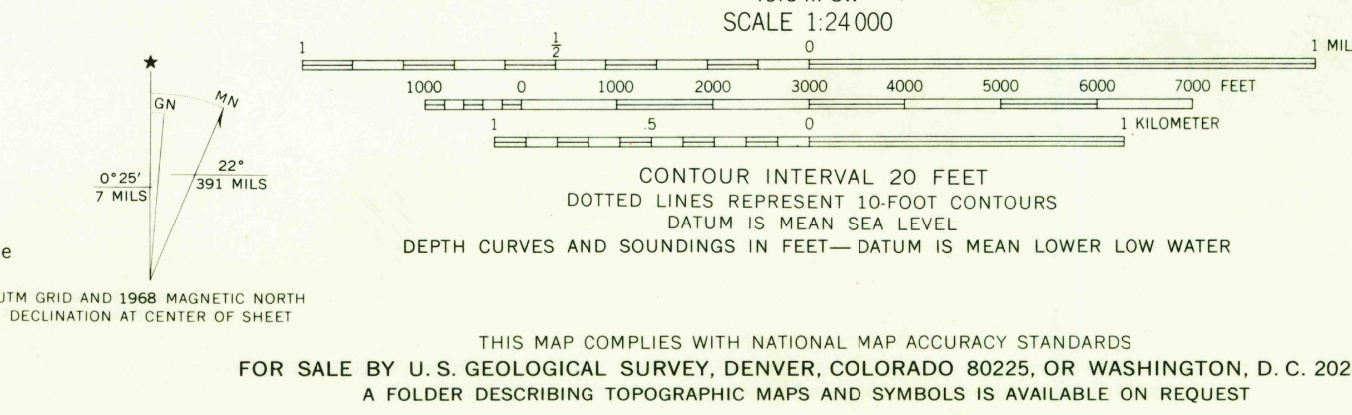


UNITED STATES  
DEPARTMENT OF THE INTERIOR  
GEOLOGICAL SURVEY

TACOMA SOUTH QUADRANGLE  
WASHINGTON—PIERCE CO.  
7.5 MINUTE SERIES (TOPOGRAPHIC)  
NW/4 TACOMA SOUTH 15' QUADRANGLE



Mapped, edited, and published by the Geological Survey  
Control by USGS, USC&GS, and USCE  
Topography by photogrammetric methods from aerial  
photographs taken 1957. Field checked 1961  
Hydrography compiled from USC&GS Chart 6407 (1958)  
This information is not intended for navigational purposes  
Polyconic projection. 1927 North American datum  
10,000-foot grid based on Washington coordinate system, south zone  
1000-meter Universal Transverse Mercator grid ticks,  
zone 10, shown in blue  
Red tint indicates areas in which only landmark buildings are shown  
Revisions shown in purple compiled by the Geological Survey from  
aerial photographs taken 1968. This information not field checked



ROAD CLASSIFICATION  
Heavy-duty ——— Light-duty ———  
Medium-duty ——— Unimproved dirt ———  
Interstate Route ——— U.S. Route ——— State Route ———  
TACOMA SOUTH, WASH.  
NW/4 TACOMA SOUTH 15' QUADRANGLE  
N4707.5—W12222.5/7.5  
1961  
PHOTOGRAPHED 1968  
AMS 1578 III NW—SERIES V891

U.S.G.S.  
FILE COPY  
TOPOGRAPHIC DIVISION  
3685  
JAN 16 1970