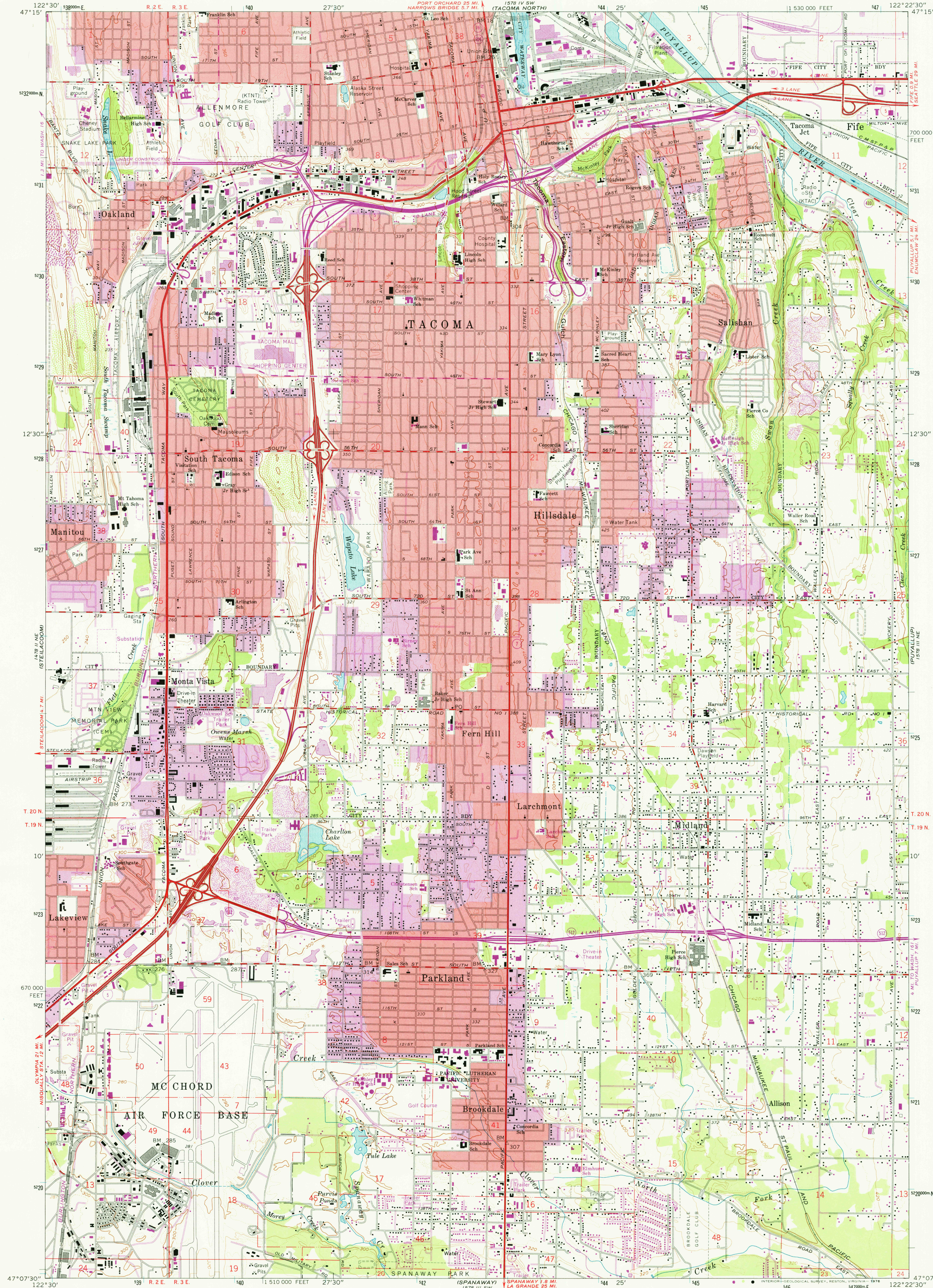


UNITED STATES
DEPARTMENT OF THE INTERIOR
GEOLOGICAL SURVEY

TACOMA SOUTH QUADRANGLE
WASHINGTON—PIERCE CO.
7.5 MINUTE SERIES (TOPOGRAPHIC)
NW/4 TACOMA SOUTH 15' QUADRANGLE



Mapped, edited, and published by the Geological Survey
Control by USGS, USC&GS, and USCE

Topography by photogrammetric methods from aerial
photographs taken 1957. Field checked 1961

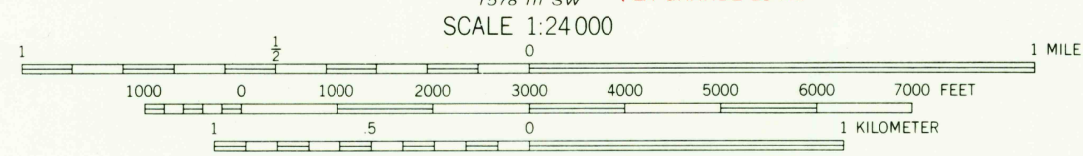
Hydrography compiled from USC&GS Chart 6407 (1958)
This information is not intended for navigational purposes

Polyconic projection. 1927 North American datum
10,000-foot grid based on Washington coordinate system, south zone
1000-meter Universal Transverse Mercator grid ticks,
zone 10, shown in blue

Red tint indicates areas in which only landmark buildings are shown

Revisions shown in purple compiled from aerial photographs
taken 1968 and 1973. This information not field checked

Purple tint indicates extension of urban areas



CONTOUR INTERVAL 20 FEET
DOTTED LINES REPRESENT 10-FOOT CONTOURS
NATIONAL GEODETIC VERTICAL DATUM OF 1929
DEPTH CURVES AND SOUNDINGS IN FEET—DATUM IS MEAN LOWER LOW WATER



QUADRANGLE LOCATION

ROAD CLASSIFICATION	
Heavy-duty	Light-duty
Medium-duty	Unimproved dirt
Interstate Route	U.S. Route
	State Route

TACOMA SOUTH, WASH.
NW/4 TACOMA SOUTH 15' QUADRANGLE
N4707.5—W12222.5/7.5

1961
PHOTOREVISED 1968 AND 1973
AMS 1578 III NW—SERIES V861

APR 0 1 1976