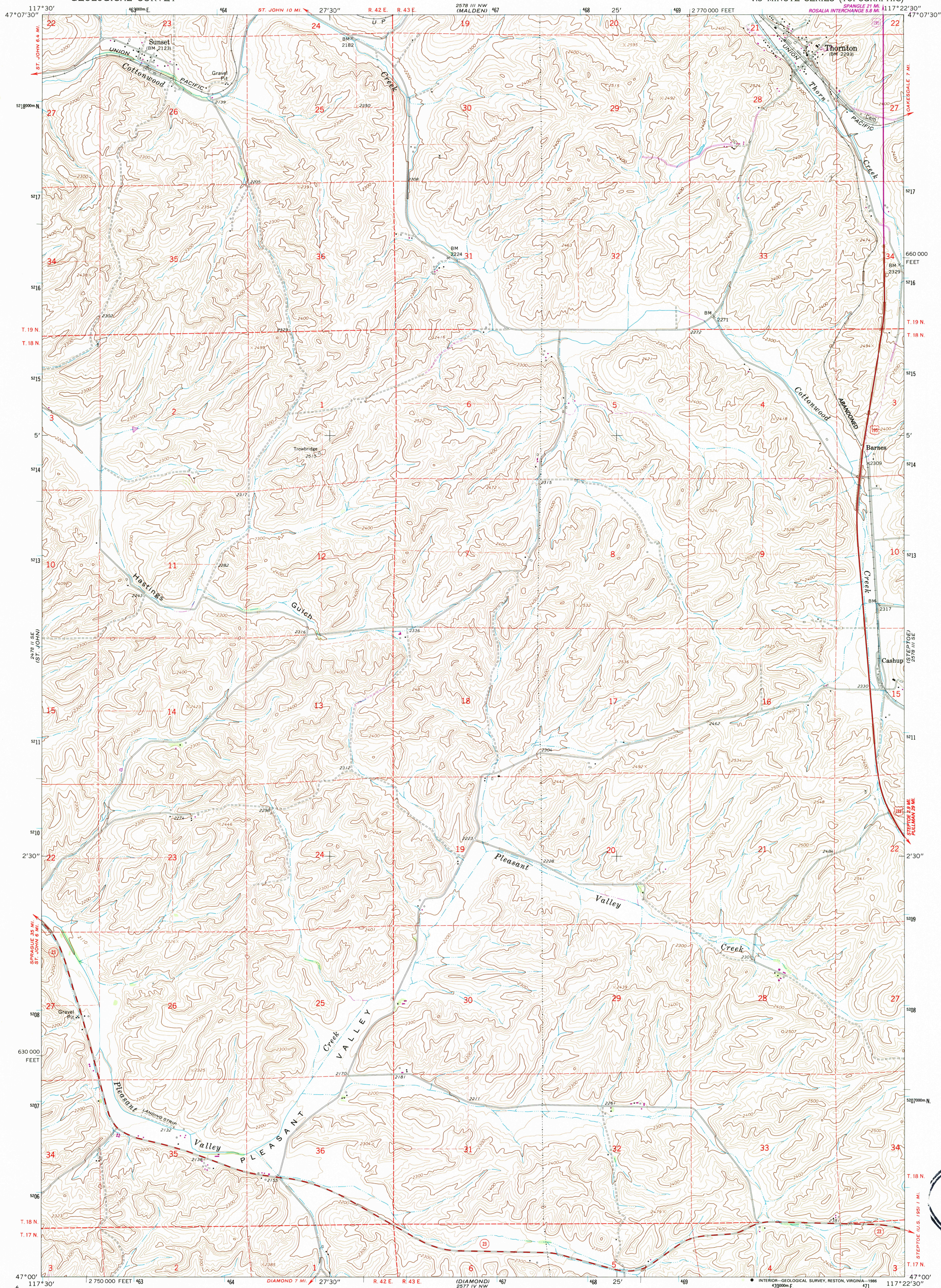


2578 III NE
(PAVE CITY)

UNITED STATES
DEPARTMENT OF THE INTERIOR
GEOLOGICAL SURVEY

THORNTON QUADRANGLE
WASHINGTON-WHITMAN CO.
7.5 MINUTE SERIES (TOPOGRAPHIC)

2578 III NE
(ROSALIA)



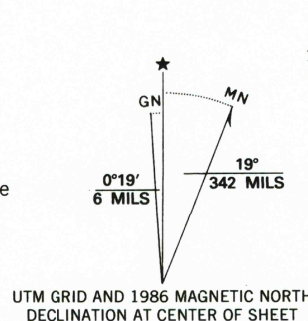
2577 NE
(THERIA)

Mapped, edited, and published by the Geological Survey
Control by USGS and USC&GS

Topography by photogrammetric methods from aerial
photographs taken 1961. Field checked 1964
Polyconic projection. 1927 North American datum
10,000-foot grid based on Washington coordinate system, south zone
1000-meter Universal Transverse Mercator grid ticks,
zone 11, shown in blue

Fine red dashed lines indicate selected fence lines
To place on the predicted North American Datum 1983,
move the projection lines 16 meters north and
80 meters east as shown by dashed corner ticks
There may be private inholdings within the boundaries of
the National or State reservations shown on this map

Revisions shown in purple compiled from aerial photographs taken 1982 and
other sources. This information not field checked. Map edited 1986



SCALE 1:24 000

CONTOUR INTERVAL 20 FEET
DOTTED LINES REPRESENT 10-FOOT CONTOURS
NATIONAL GEODETIC VERTICAL DATUM OF 1929

THIS MAP COMPLIES WITH NATIONAL MAP ACCURACY STANDARDS
FOR SALE BY U. S. GEOLOGICAL SURVEY, DENVER, COLORADO 80225, OR RESTON, VIRGINIA 22092
A FOLDER DESCRIBING TOPOGRAPHIC MAPS AND SYMBOLS IS AVAILABLE ON REQUEST



ROAD CLASSIFICATION
Heavy-duty ——— Light-duty ———
Medium-duty ——— Unimproved dirt ———
U. S. Route ——— State Route ———

THORNTON, WASH.
47117-44-TF-024

1964
PHOTOREVISED 1986
DMA 2578 III SW-SERIES V891

