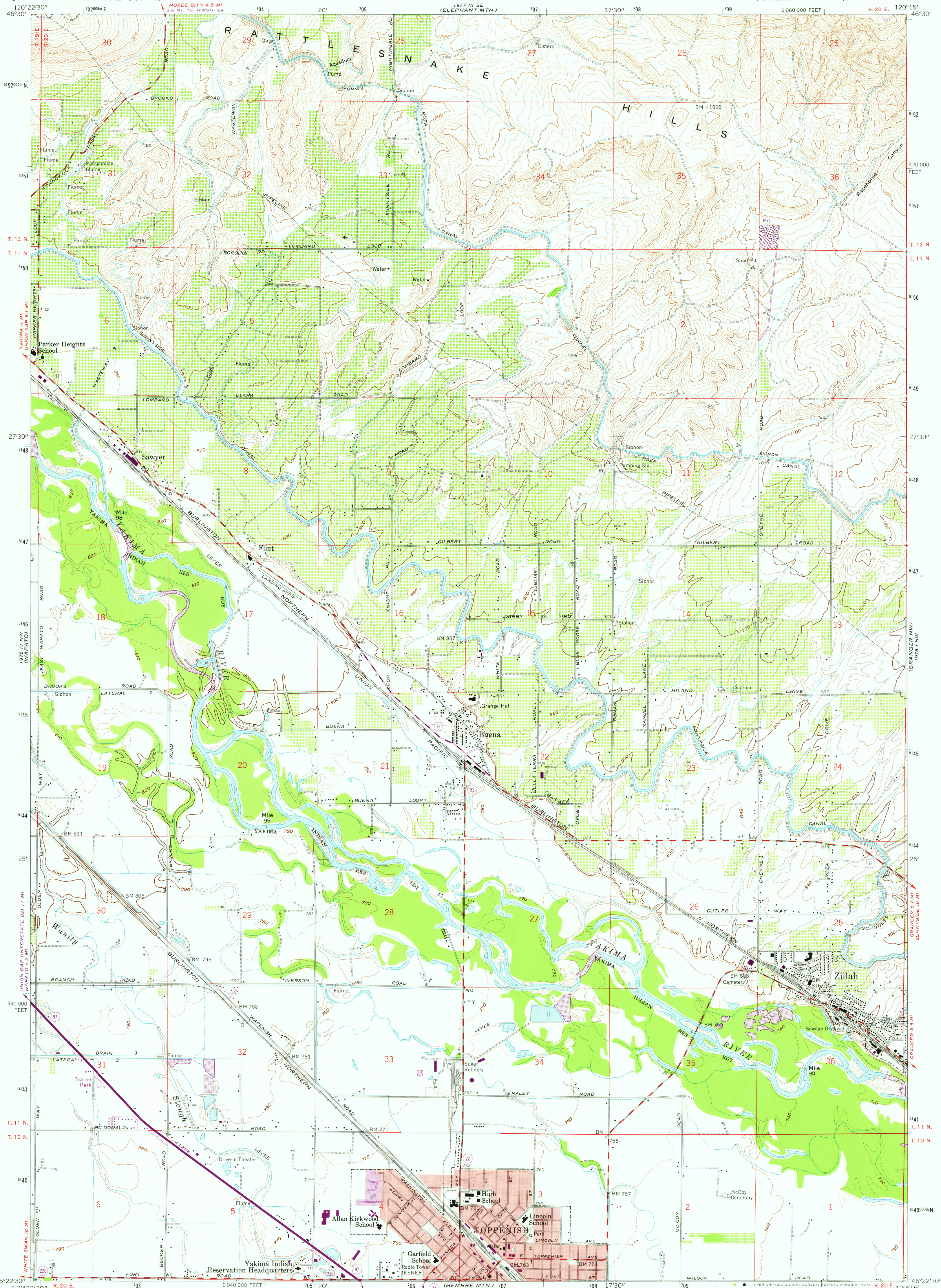


UNITED STATES
DEPARTMENT OF THE INTERIOR
GEOLOGICAL SURVEY

TOPPENISH QUADRANGLE
WASHINGTON—YAKIMA CO.
7.5 MINUTE SERIES (TOPOGRAPHIC)



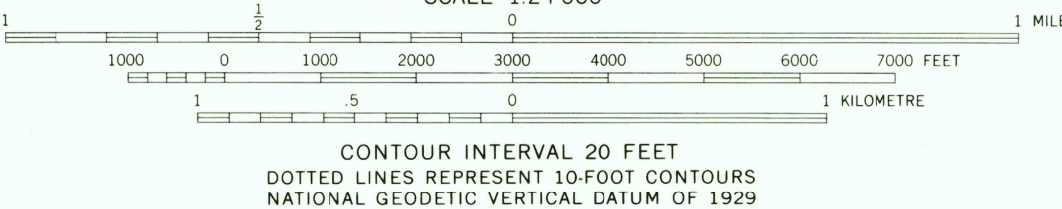
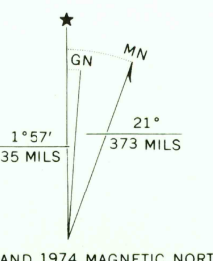
Mapped, edited, and published by the Geological Survey
Control by USGS and NDS/NOAA

Topography from aerial photographs by photogrammetric methods
Aerial photographs taken 1956. Field check 1958

Polynomial projection. 1927 North American datum
10,000-foot grid based on Washington coordinate system, south zone
1000-metre Universal Transverse Mercator grid ticks,
zone 10, shown in blue.

Red tint indicates areas in which only
landmark buildings are shown

Unchecked elevations are shown in brown



ROAD CLASSIFICATION	
Primary highway, hard surface	Light-duty road, hard or improved surface
Secondary highway, hard surface	Unimproved road
Interstate Route	U. S. Route
	State Route



TOPPENISH, WASH.
N 4622.5—W 12015.7.5

1958
PHOTOREVISED 1974
AMS 1976 IV NE—SERIES V891

JAN 19 1976

USGS
HISTORICAL FILE
TOPOGRAPHIC DIVISION

THIS MAP COMPLIES WITH NATIONAL MAP ACCURACY STANDARDS
FOR SALE BY U. S. GEOLOGICAL SURVEY, DENVER, COLORADO 80225, OR RESTON, VIRGINIA 22092
A FOLDER DESCRIBING TOPOGRAPHIC MAPS AND SYMBOLS IS AVAILABLE ON REQUEST

Revision shown in purple compiled from aerial photographs
taken 1974. This information not field checked
Purple tint indicates extension of urban areas