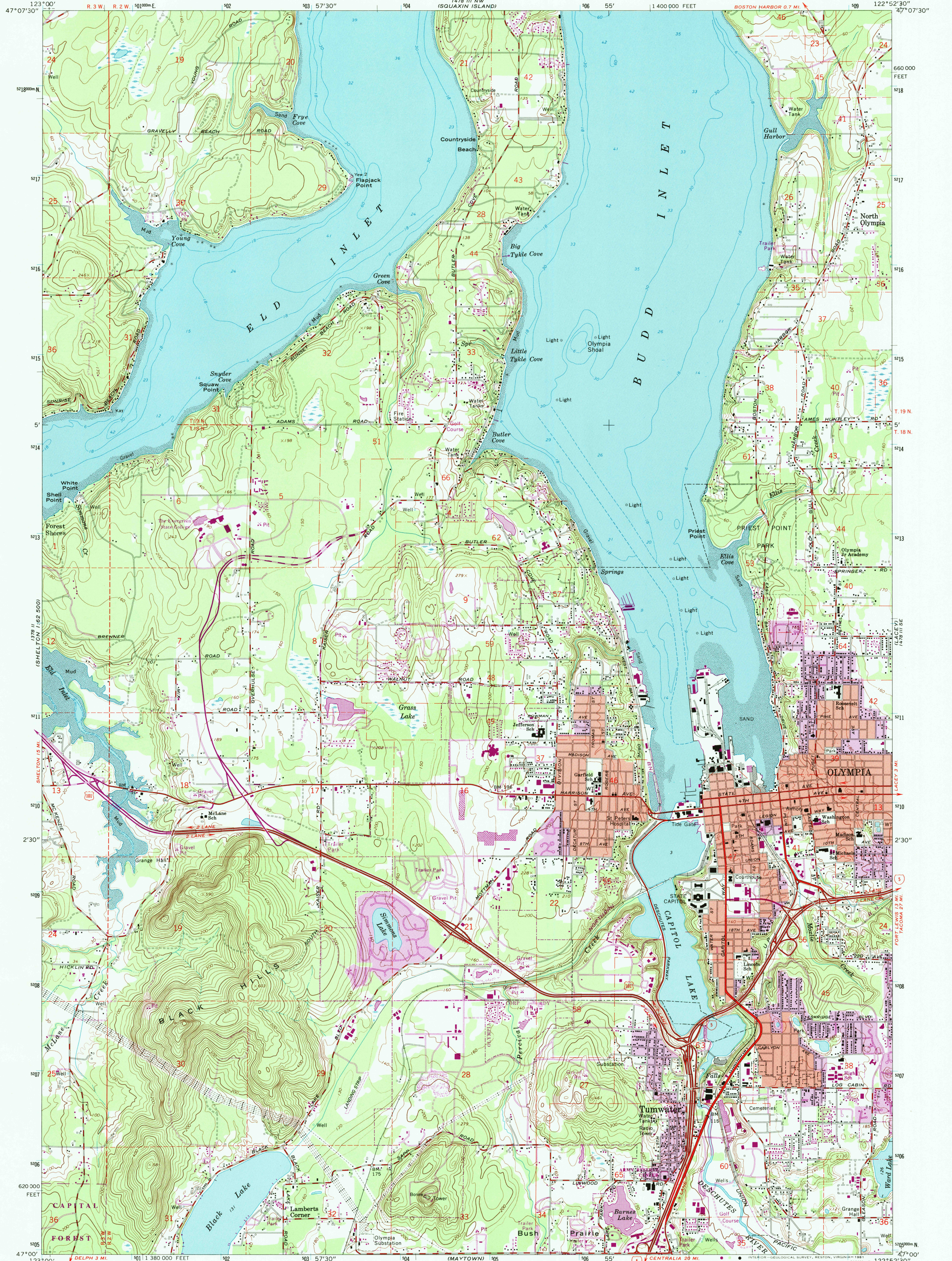
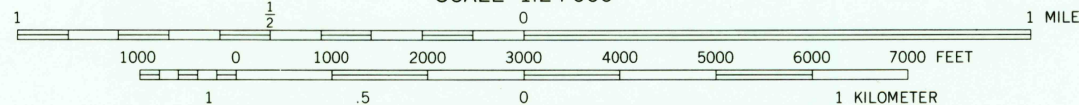
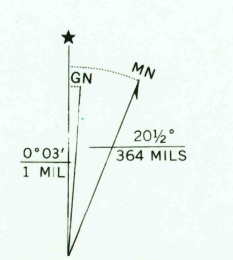


UNITED STATES
DEPARTMENT OF THE INTERIOR
GEOLOGICAL SURVEY

TUMWATER QUADRANGLE
WASHINGTON—THURSTON CO.
7.5 MINUTE SERIES (TOPOGRAPHIC)
SW/4 OLYMPIA 15' QUADRANGLE



Map by the Defense Mapping Agency
Edited and published by the Geological Survey
Control by USGS and NOS/NOAA
Topography by photogrammetric methods from aerial
photographs taken 1959. Field checked 1959
Selected hydrographic data compiled from NOS chart
6462 (1947) and hydrographic surveys (1936). This
information is not intended for navigational purposes
Polyconic projection. 10,000-foot grid ticks based on
Washington coordinate system, south zone. 1000-meter
Universal Transverse Mercator grid ticks, zone 10, shown
in blue. 1927 North American Datum. 10 place on the
predicted North American Datum 1983 move the projection
lines 23 meters north and 95 meters east as shown by
dashed corner ticks
There may be private inholdings within the boundaries of
the National or State reservations shown on this map



CONTOUR INTERVAL 20 FEET
DOTTED LINES REPRESENT 10-FOOT CONTOURS
NATIONAL GEODETIC VERTICAL DATUM OF 1929
DEPTH CURVES AND SOUNDINGS IN FEET—DATUM IS MEAN LOWER LOW WATER
THE RELATIONSHIP BETWEEN THE TWO DATUMS IS VARIABLE
SHORELINE SHOWN REPRESENTS THE APPROXIMATE LINE OF MEAN HIGH WATER
THE MEAN RANGE OF TIDE IS APPROXIMATELY 10 FEET
THIS MAP COMPLIES WITH NATIONAL MAP ACCURACY STANDARDS
FOR SALE BY U.S. GEOLOGICAL SURVEY, DENVER, COLORADO 80225, OR RESTON, VIRGINIA 22092
A FOLDER DESCRIBING TOPOGRAPHIC MAPS AND SYMBOLS IS AVAILABLE ON REQUEST



ROAD CLASSIFICATION
Heavy-duty ——— Light-duty ———
Medium-duty ——— Unimproved dirt ———
Interstate Route ——— U.S. Route ———

TUMWATER, WASH.
SW/4 OLYMPIA 15' QUADRANGLE
N4700—W12252.5/7.5
1959
DMA 1478 III SW—SERIES V891

