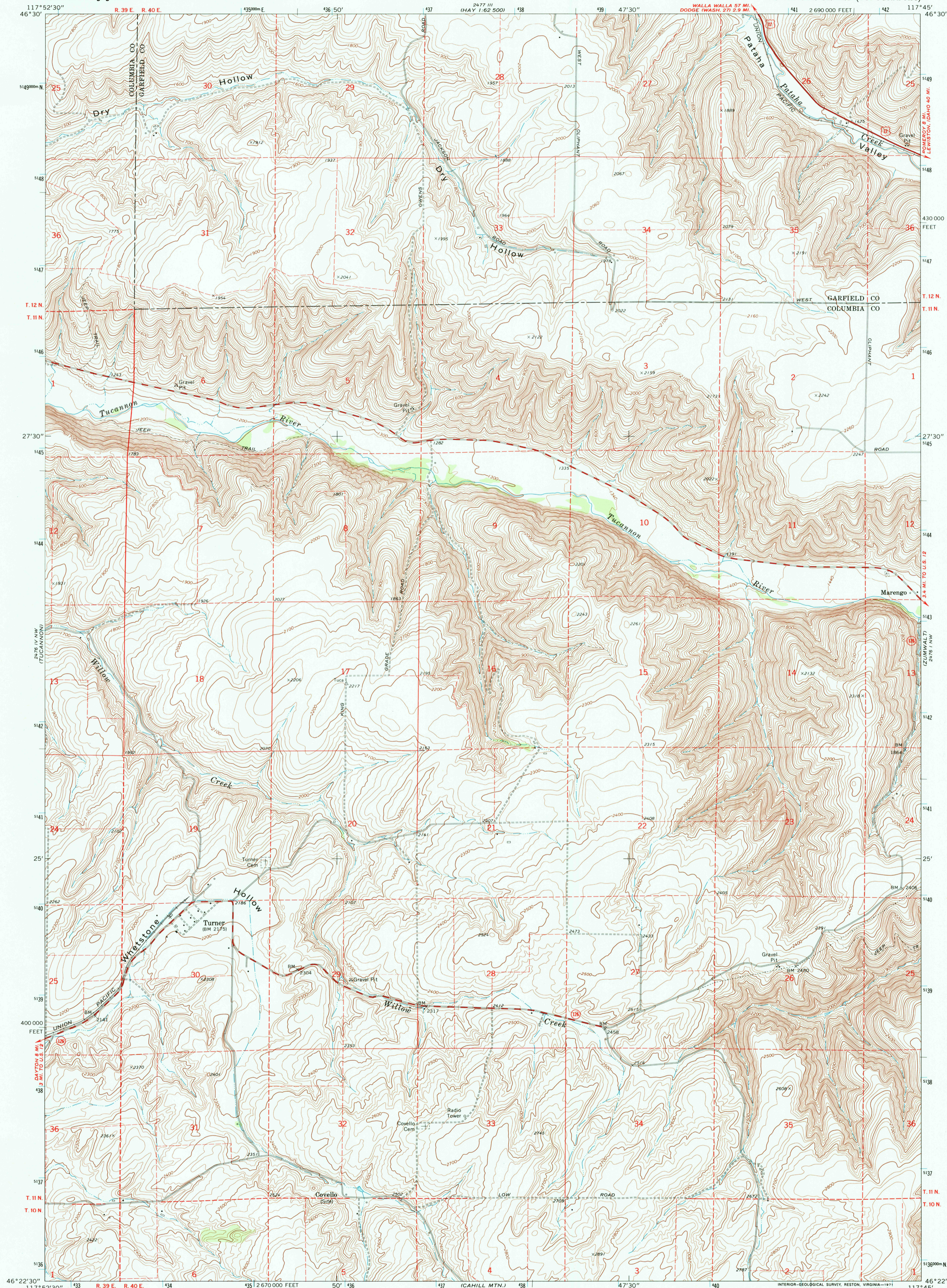




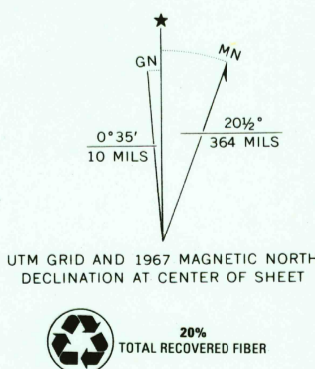
U.S. DEPARTMENT OF THE INTERIOR
U.S. GEOLOGICAL SURVEY

TURNER QUADRANGLE
WASHINGTON
7.5 MINUTE SERIES (TOPOGRAPHIC)



RECEIVED
JAN 31 2001
U.S. GEOLOGICAL SURVEY
HISTORICAL MAP ARCHIVES

Mapped, edited, and published by the Geological Survey
Control by USGS and USC&GS
Topography by photogrammetric methods from aerial
photographs taken 1966. Field checked 1967
Polyconic projection. 1927 North American datum
10,000-foot grid based on Washington coordinate system,
south zone
1000-meter Universal Transverse Mercator grid ticks,
zone 11, shown in blue
Fine red dashed lines indicate selected fence lines



SCALE 1:24,000
CONTOUR INTERVAL 20 FEET
DATUM IS MEAN SEA LEVEL



ROAD CLASSIFICATION
Heavy-duty ——— Light-duty ———
Medium-duty ——— Unimproved dirt ———
U. S. Route —○— State Route —○—

TURNER, WASH.
N4622.5—W11745/7.5
1967

AMS 2476 IV NE—SERIES V891

