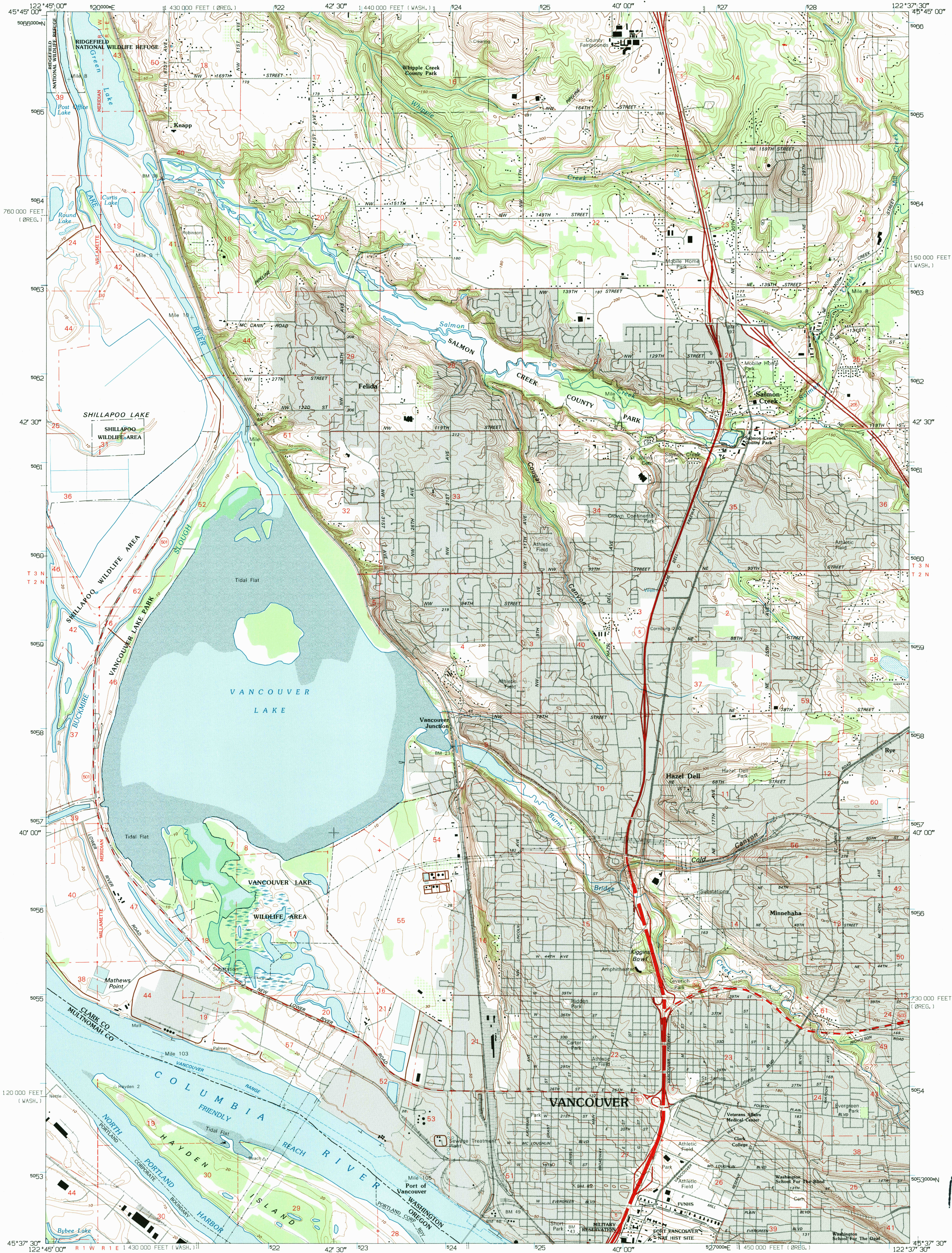
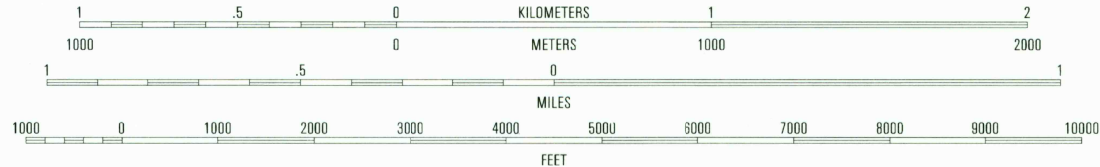
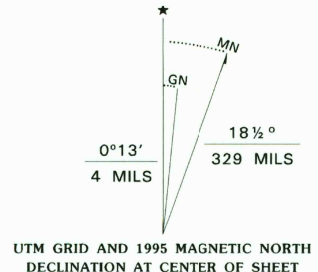


UNITED STATES
DEPARTMENT OF THE INTERIOR
GEOLOGICAL SURVEY

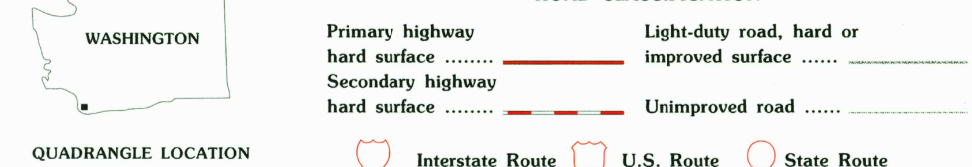
VANCOUVER QUADRANGLE
WASHINGTON-OREGON
7.5-MINUTE SERIES (TOPOGRAPHIC)



Produced by the United States Geological Survey
Control by USGS and NOS/NOAA
Compiled from imagery dated 1951. Revised from imagery dated 1990. PLSS and survey control current as of 1961.
Map edited 1995. Contours and land elevations have not been revised and may conflict with other content.
North American Datum of 1927 (NAD 27). Projection and blue 1000-meter Universal Transverse Mercator ticks, zone 10 10 000-foot ticks. Washington Coordinate System, south zone and Oregon Coordinate System, north zone.
North American Datum of 1983 (NAD 83) is shown by dashed corner ticks. The values of the shift between NAD 27 and NAD 83 for 7.5-minute intersections are obtainable from National Geodetic Survey NADCON software.
There may be private buildings within the boundaries of the National or State reservations shown on this map.
Fine red dashed lines indicate selected fence and field lines where generally visible on aerial photographs. This information is unchecked.



CONTOUR INTERVAL 10 FEET
NATIONAL GEODETIC VERTICAL DATUM OF 1929
SHORELINE SHOWN REPRESENTS THE APPROXIMATE LINE OF MEAN HIGH WATER
THE MEAN RANGE OF TIDE IS APPROXIMATELY 2 FEET
TO CONVERT FEET TO METERS MULTIPLY BY 0.3048
TO CONVERT METERS TO FEET MULTIPLY BY 3.2808
THIS MAP COMPLIES WITH NATIONAL MAP ACCURACY STANDARDS
FOR SALE BY U.S. GEOLOGICAL SURVEY
DENVER, COLORADO 80225, OR RESTON, VIRGINIA 22092
A FOLDER DESCRIBING TOPOGRAPHIC MAPS AND SYMBOLS IS AVAILABLE ON REQUEST



1	2	3	4	5	6	7	8
1 Saint Helens	2 Ridgefield	3 Battle Ground	4 Sauvie Island	5 Orchard	6 Linton	7 Portland	8 Mount Tabor

ADJOINING 7.5' QUADRANGLE NAMES

VANCOUVER, WA-OR
45122-F6-TF-024
1990
DMA 1475 II NW-SERIES V391

