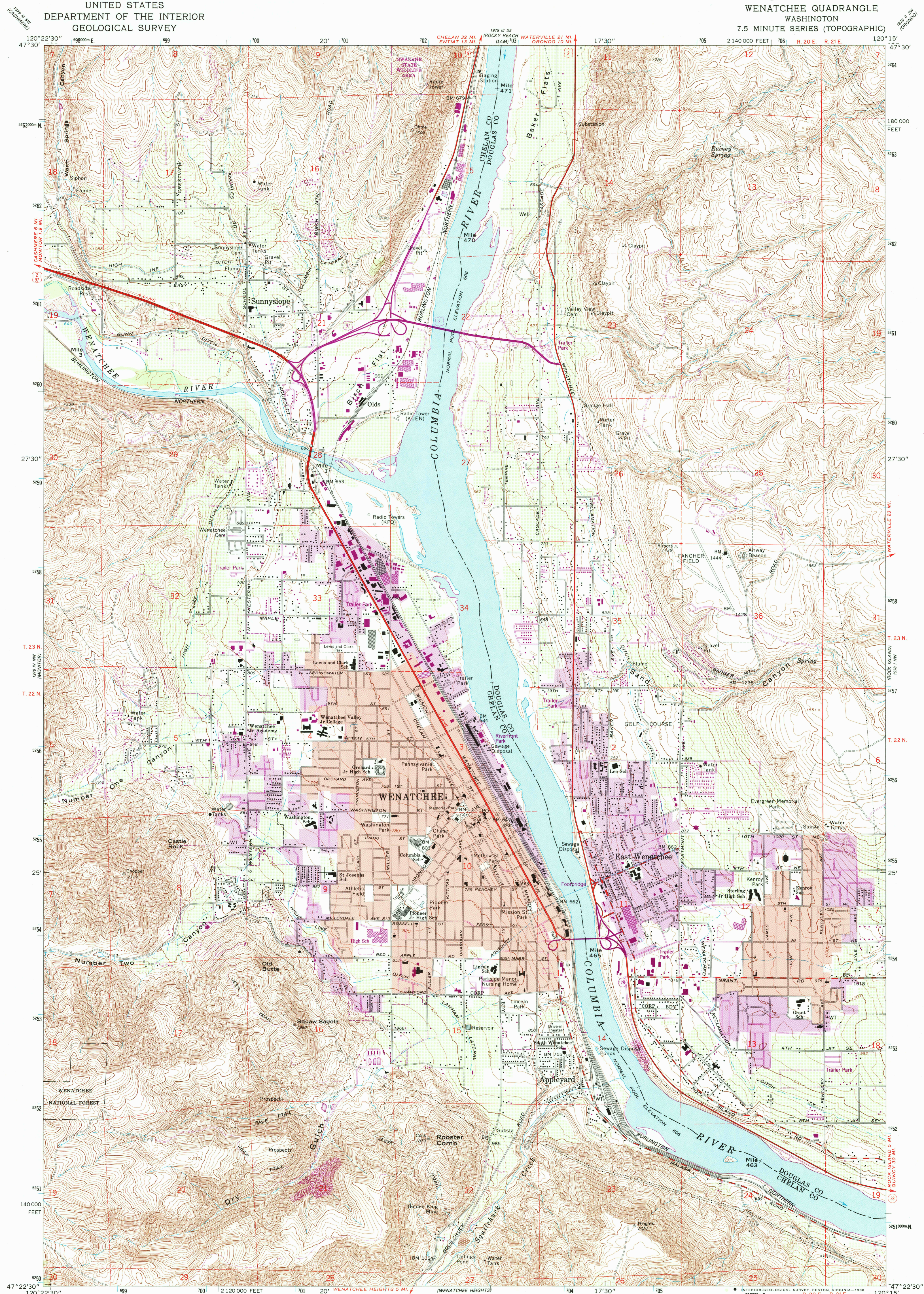


UNITED STATES  
DEPARTMENT OF THE INTERIOR  
GEOLOGICAL SURVEY

WENATCHEE QUADRANGLE  
WASHINGTON  
7.5 MINUTE SERIES (TOPOGRAPHIC)



Mapped, edited, and published by the Geological Survey

Control by USGS, NOS/NOAA, USCE, and State of Washington

Topography by photogrammetric methods from aerial photographs taken 1954. Field checked 1966

Polyconic projection. 1927 North American Datum

10,000-foot grid based on Washington coordinate system, north zone

1000-meter Universal Transverse Mercator grid ticks, zone 10, shown in blue

Red tint indicates areas in which only landmark buildings are shown

To place on the predicted North American Datum 1983

move the projection lines 20 meters north and 88 meters east as shown by dashed corner ticks

There may be private inholdings within the boundaries of the National or State reservations shown on this map

Purple tint indicates extension of urban areas

SCALE 1:24,000

CONTOUR INTERVAL 20 FEET

NATIONAL GEODETIC VERTICAL DATUM OF 1929

THIS MAP COMPLIES WITH NATIONAL MAP ACCURACY STANDARDS  
FOR SALE BY U.S. GEOLOGICAL SURVEY  
DENVER, COLORADO 80225, OR RESTON, VIRGINIA 22092  
A FOLDER DESCRIBING TOPOGRAPHIC MAPS AND SYMBOLS IS AVAILABLE ON REQUEST

ROAD CLASSIFICATION  
Heavy-duty ——— Light-duty ———  
Medium-duty ——— Unimproved dirt ———  
U.S. Route ——— State Route ———



QUADRANGLE LOCATION

WENATCHEE, WASH

47120-D3-TF-024

Revisions shown in purple and woodland  
compiled from aerial photographs taken 1983  
and other source data. Partial field check  
by U. S. Forest Service. Map edited 1987

1966  
PHOTOREVISED 1987  
DMA 1978 IV NE-SERIES Y891

