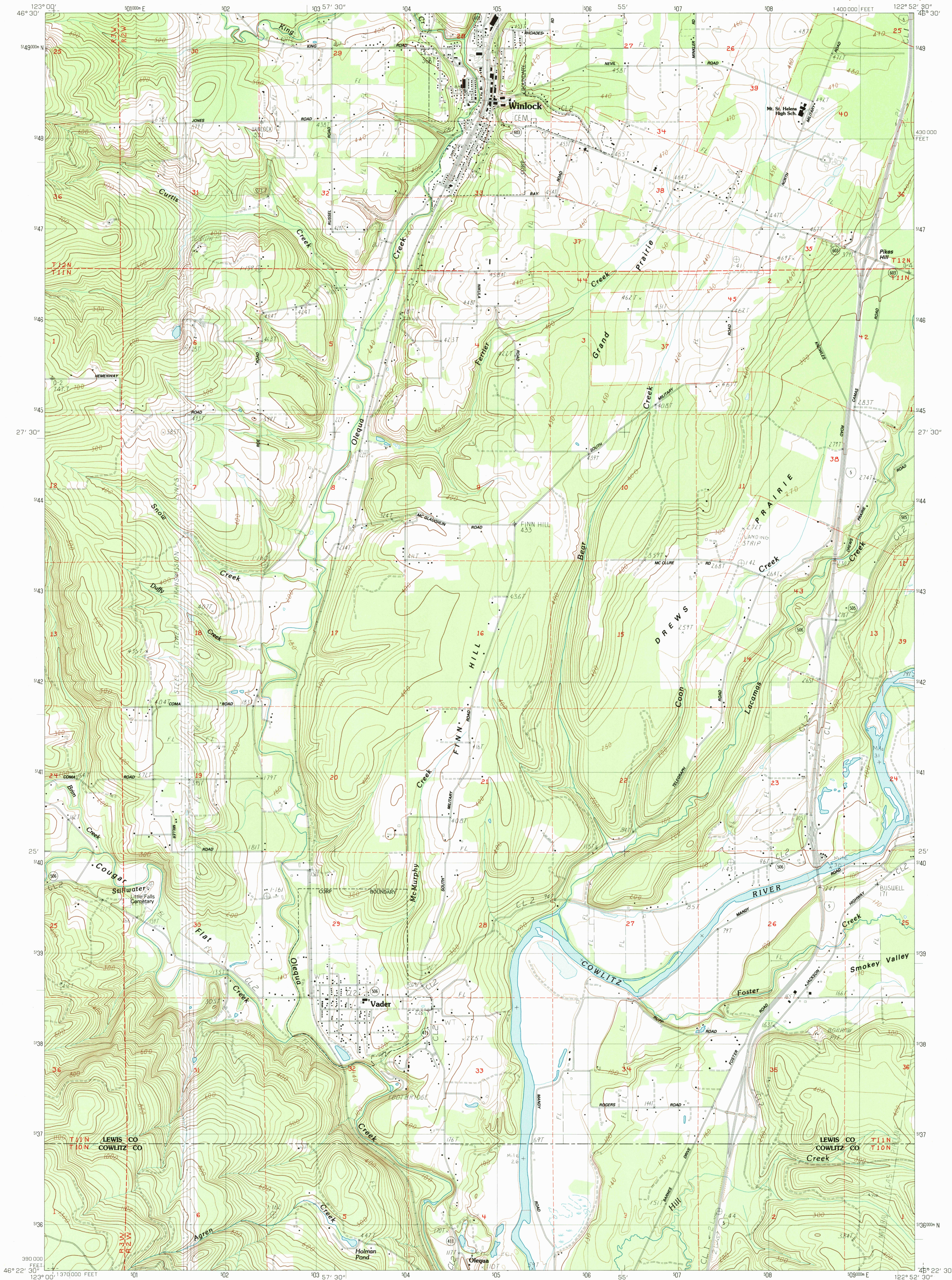


UNITED STATES  
DEPARTMENT OF THE INTERIOR  
GEOLOGICAL SURVEY

WINLOCK QUADRANGLE  
WASHINGTON  
7.5 MINUTE SERIES (TOPOGRAPHIC)



PRODUCED BY THE UNITED STATES GEOLOGICAL SURVEY  
CONTROL BY ..... USGS, NOS/NOAA, AND USGS  
COMPILED FROM AERIAL PHOTOGRAPHS TAKEN ..... 1980  
FIELD CHECKED ..... 1981. MAP EDITED ..... 1985  
PROJECTION ..... LAMBERT CONFORMAL CONIC  
GRID: 1000-METER UNIVERSAL TRANSVERSE MERCATOR ..... ZONE 10  
10000-FOOT STATE GRID TICS ..... WASHINGTON, SOUTH ZONE  
UTM GRID DECLINATION ..... 0°02' EAST  
1993 MAGNETIC NORTH DECLINATION ..... 19° EAST  
VERTICAL DATUM ..... NATIONAL GEODETIC VERTICAL DATUM OF 1929  
HORIZONTAL DATUM ..... 1927 NORTH AMERICAN DATUM (NAD 27)  
The difference between NAD 27 and North American Datum  
of 1983 (NAD 83) for 7.5 minute intersections is given in  
USGS Bulletin 1875. The NAD 83 is shown by dashed  
corner ticks  
There may be private inholdings within the boundaries of  
any Federal and State reservations shown on this map.  
Photorevised from 1991 source; no major culture or  
drainage changes observed. Boundaries and names verified  
1993

**PROVISIONAL MAP**  
Produced from original  
manuscript drawings. Informa-  
tion shown as of date of  
field check.

SCALE 1:24 000  
1 000 0 1 2  
KILOMETERS  
1 000 0 1000 2000  
METERS  
1 000 0 1000 2000 3000 4000 5000 6000 7000 8000 9000 10000  
MILES  
FEET  
QUADRANGLE LOCATION  
WASHINGTON  
1 2 3  
4 5  
6 7 8  
1 Curtis  
2 Napavine  
3 Jackson Prairie  
4 Wildwood  
5 Toledo  
6 Abernathy Mtn.  
7 Castle Rock  
8 Silver Lake  
ADJOINING 7.5 QUADRANGLE NAMES  
THIS MAP COMPLIES WITH NATIONAL MAP ACCURACY STANDARDS  
FOR SALE BY U. S. GEOLOGICAL SURVEY, DENVER, COLORADO 80225, OR RESTON, VIRGINIA 22092

ROAD LEGEND  
Improved Road .....  
Unimproved Road .....  
Trail .....  
Interstate Route ..... U.S. Route ..... State Route

WINLOCK, WASH.  
PROVISIONAL EDITION 1985

46122-D8-TF-024  
MINOR REVISION 1993

USGS 1:250,000 HISTORICAL  
MAP ARCHIVES  
JUN 18 1993  
REC'D FILE COPY