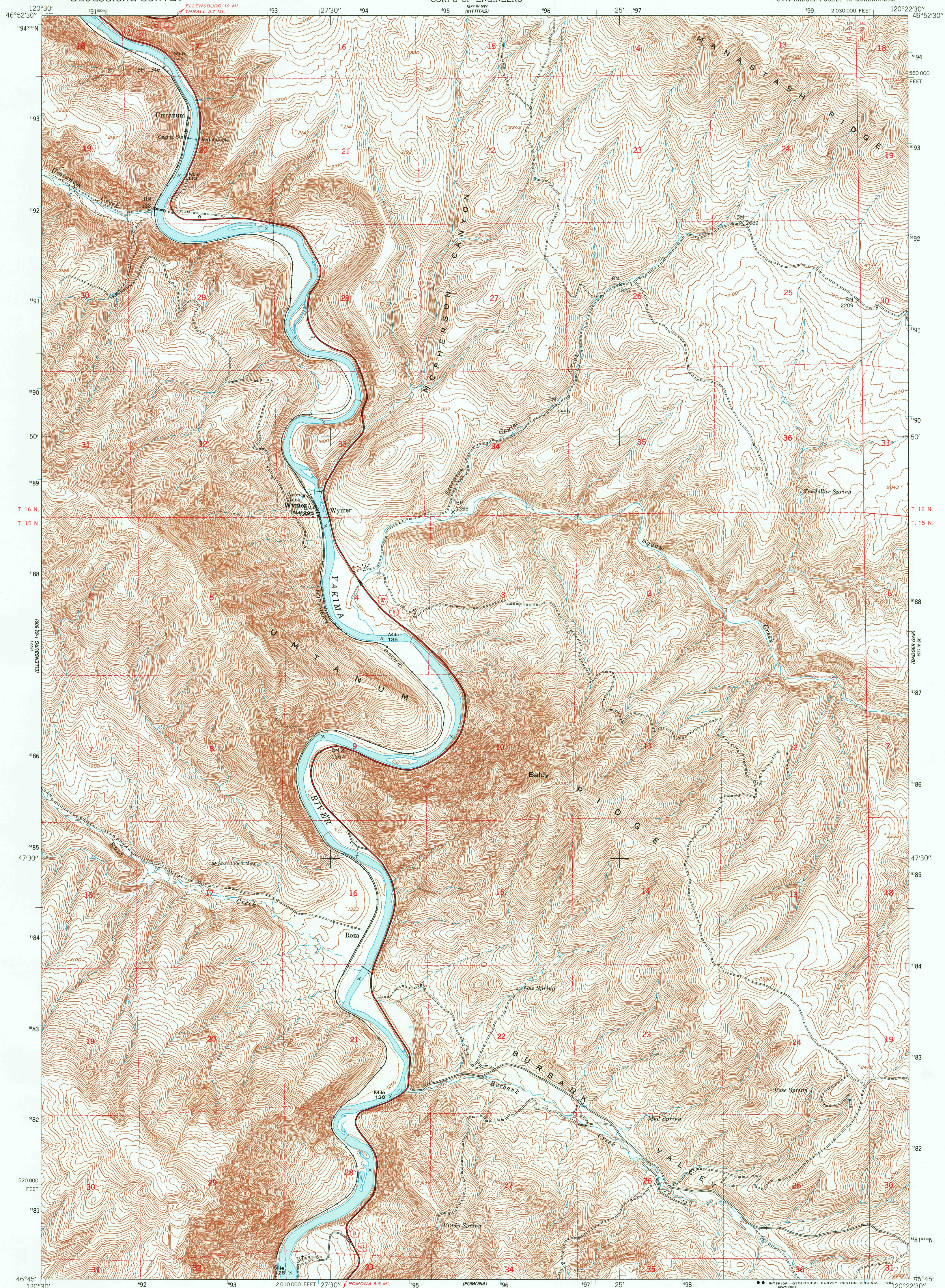


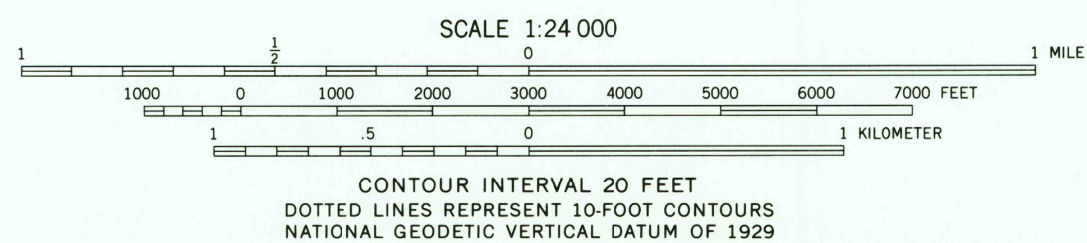
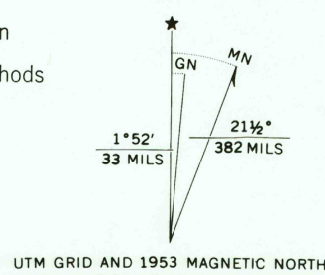
UNITED STATES
DEPARTMENT OF THE INTERIOR
GEOLOGICAL SURVEY

UNITED STATES
DEPARTMENT OF THE ARMY
CORPS OF ENGINEERS

WYMER QUADRANGLE
WASHINGTON-KITTITAS CO.
7.5 MINUTE SERIES (TOPOGRAPHIC)
SW 1/4 BADGER POCKET 15' QUADRANGLE



Mapped by the Army Map Service
Published for civil use by the Geological Survey
Control by USGS, USC&GS, and U. S. Bureau of Reclamation
Topography from aerial photographs by photogrammetric methods
Aerial photographs taken 1952. Field check 1953
Polyconic projection, 1927 North American datum
10,000-foot grid based on Washington coordinate system,
south zone
1000-meter Universal Transverse Mercator grid ticks,
zone 10, shown in blue
To place on the predicted North American Datum 1983,
move the projection lines 20 meters north and
89 meters east as shown by dashed corner ticks
Unchecked elevations are shown in brown



ROAD CLASSIFICATION
Heavy-duty ——— Light-duty ———
Unimproved dirt ———
U. S. Route ——— State Route ———

WYMER, WASH.
SW 1/4 BADGER POCKET 15' QUADRANGLE
N4645-W12022.5/7.5

1953

DMA 1977 IV SW-SERIES V891

THIS MAP COMPLIES WITH NATIONAL MAP ACCURACY STANDARDS
FOR SALE BY U. S. GEOLOGICAL SURVEY, DENVER, COLORADO 80225, OR RESTON, VIRGINIA 22092
A FOLDER DESCRIBING TOPOGRAPHIC MAPS AND SYMBOLS IS AVAILABLE ON REQUEST

RETURN TO:
USGS NAD HISTORICAL MAP ARCHIVES

DEC 15 1982