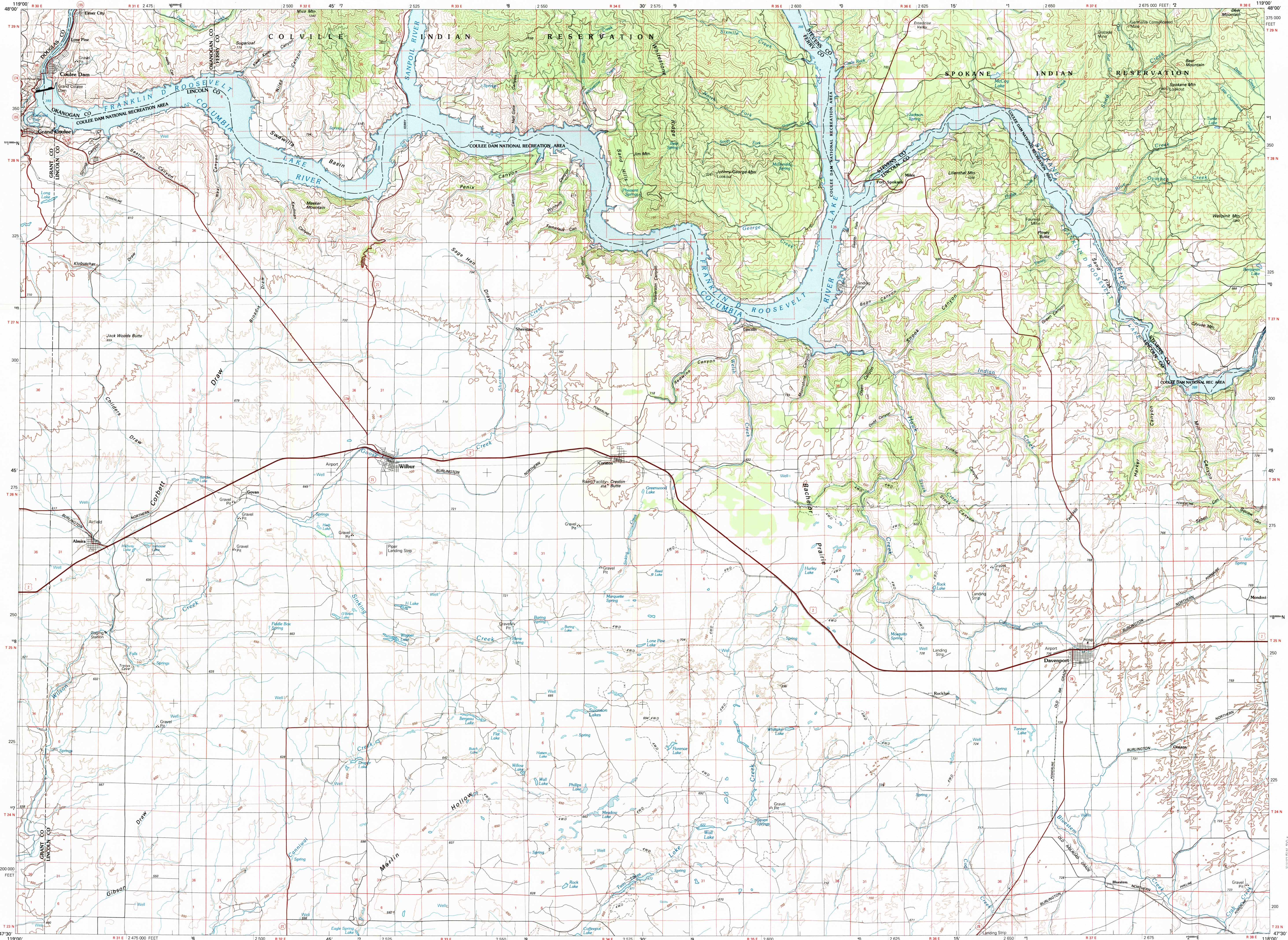
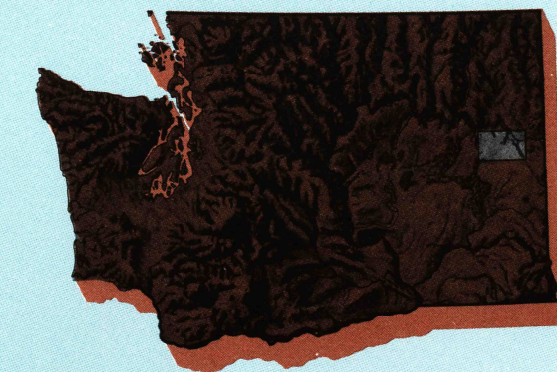


COULEE DAM, WASHINGTON

30X60 MINUTE SERIES (TOPOGRAPHIC)

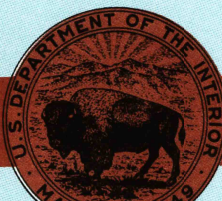


1:100 000-scale metric
topographic map of
Coulee Dam
WASHINGTON



30 X 60 MINUTE QUADRANGLE
SHOWING

- Contours and elevations in meters
- Highways, roads and other manmade structures
- Water features
- Woodland areas
- Geographic names



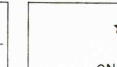
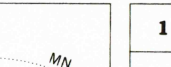
GEOLOGICAL SURVEY

1983

Produced by the United States Geological Survey
Compiled from USGS 1:24 000 and 1:62 000-scale topographic maps dated 1948-1969. Planimetry revised from aerial photographs taken 1978 and other source data. Revised information not field checked. Map edited 1983.
Projection and 10 000-meter grid, zone 11, Universal Transverse Mercator
25 000-foot grid ticks based on Washington coordinate system, north zone, 1922 North American Datum
To place on the predicted North American Datum 1983 move the projection lines 17 meters north and 83 meters east
There may be private inholdings within the boundaries of the National or State reservations shown on this map

CONTOUR INTERVAL 50 METERS
NATIONAL GEODETIC VERTICAL DATUM OF 1929

THIS MAP COMPLIES WITH NATIONAL MAP ACCURACY STANDARDS

CONVERSION TABLE		DECLINATION DIAGRAM		ADJOINING MAPS				
Meters	Feet			1	2	3		
1	3.2808			1	2	3		
2	6.5617			4	5			
3	9.8425							
4	13.1234							
5	16.4042							
6	19.6850							
7	22.9659							
8	26.2467							
9	29.5276							
10	32.8084							
To convert meters to feet multiply by 3.2808		UTM grid convergence (GM) and 1983 magnetic declination (MD) at center of map. Diagram is approximate						
To convert feet to meters multiply by 0.3048				1 Omak 2 Napalet 3 Chowah 4 Banks Lake 5 Spokane 6 Moses Lake 7 Riville 8 Rosalia				

FOR SALE BY U. S. GEOLOGICAL SURVEY, DENVER, COLORADO 80205
OR RESTON, VIRGINIA 22092

Topographic Map Symbols

Primary highway, hard surface.....	
Secondary highway, hard surface.....	
Light duty road, principal street, hard or improved surface.....	
Other road or street; trail.....	
Route marker: Interstate, U. S., State.....	
Railroad: standard gage; narrow gage.....	
Bridge, overpass, underpass.....	
Tunnel: road, railroad.....	
Built up area; locality; elevation.....	
Airport; landing field; landing strip.....	
National boundary.....	
State boundary.....	
County boundary.....	
National or State reservation boundary.....	
Land grant boundary.....	
U. S. public lands survey: range, township, section.....	
Range, township, section line: protracted.....	
Power transmission line; pipeline.....	
Dam; dam with lock.....	
Cemetery; building.....	
Windmill; water well; spring.....	
Mine shaft; adit or cave; mine, quarry; gravel pit.....	
Campground; picnic area; U. S. location monument.....	
Ruins; cliff dwelling.....	
Distorted surface: strip mine, lava, sand.....	
Contours: index; intermediate; supplementary.....	
Bathymetric contours: index; intermediate.....	
Stream, lake: perennial; intermittent.....	
Rapids, large and small; falls, large and small.....	
Area to be submerged; marsh, swamp.....	
Land subject to controlled inundation; woodland.....	
Scrub; mangrove.....	
Orchard; vineyard.....	

A pamphlet describing topographic maps is available on request