

PULLMAN, WASHINGTON—IDAHO

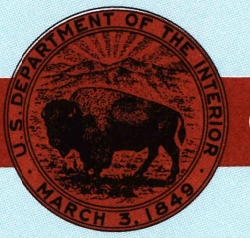
30X60 MINUTE SERIES (TOPOGRAPHIC)

1:100 000-scale metric
topographic map of
Pullman
WASHINGTON—IDAHO



30 X 60 MINUTE QUADRANGLE
SHOWING

- Contours and elevations in meters
- Highways, roads and other manmade structures
- Water features
- Woodland areas
- Geographic names



GEOLOGICAL SURVEY

1982

Produced by the United States Geological Survey

Compiled from USGS 1:24 000-scale topographic maps dated 1964-1975 and other maps in progress. Planimetry revised from aerial photographs taken 1975 and other source data. Revised information not field checked. Map edited 1982.
Projection and 10 000-meter grid, zone 11, Universal Transverse Mercator.
25 000-foot grid ticks based on Washington coordinate system, south zone and Idaho coordinate system, west zone 1927 North American Datum.
To place on the predicted North American Datum 1983 move the projection lines 16 meters north and 80 meters east.
There may be private inholdings within the boundaries of the National or State reservations shown on this map.

CONTOUR INTERVAL 40 METERS
SUPPLEMENTARY CONTOUR INTERVAL 20 METERS
NATIONAL GEODETIC VERTICAL DATUM OF 1929

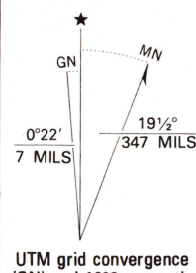
THIS MAP COMPLIES WITH NATIONAL MAP ACCURACY STANDARDS

CONVERSION TABLE

Meters	Feet
1	3.2808
2	6.5617
3	9.8425
4	13.1234
5	16.4042
6	19.6850
7	22.9659
8	26.2467
9	29.5276
10	32.8084

To convert meters to feet multiply by 3.2808
To convert feet to meters multiply by 0.3048

DECLINATION DIAGRAM



UTM grid convergence (GN) and 1982 magnetic declination (MN) at center of map
Diagram is approximate

ADJOINING MAPS

1	2	3
4	5	
6	7	8

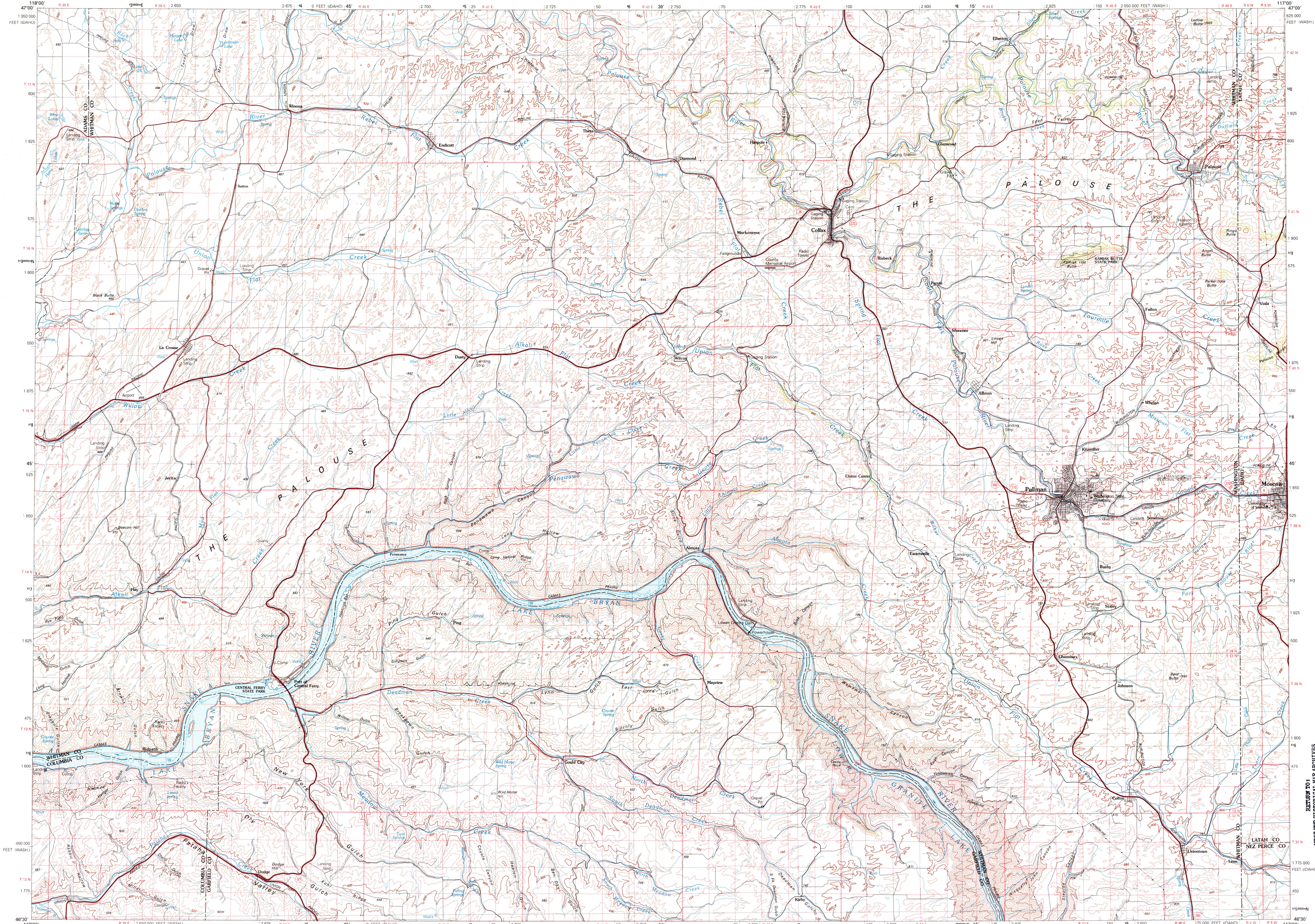
1 Ritzville
2 Rosalia
3 St. Maries
4 Connelly
5 Pritchard
6 Walla Walla
7 Clarkston
8 Orofino

FOR SALE BY U. S. GEOLOGICAL SURVEY, DENVER, COLORADO 80225
OR RESTON, VIRGINIA 22092

Topographic Map Symbols

- Primary highway, hard surface
- Secondary highway, hard surface
- Light duty road, principal street, hard or improved surface
- Other road or street; trail
- Route marker: Interstate; U. S.; State
- Railroad: standard gage; narrow gage
- Bridge: overpass; underpass
- Tunnel: road; railroad
- Built up area; locality; elevation
- Airport; landing field; landing strip
- National boundary
- State boundary
- County boundary
- National or State reservation boundary
- Land grant boundary
- U. S. public lands survey: range, township; section
- Range, township; section line: protruded
- Power transmission line; pipeline
- Dam; dam with lock
- Cemetery; building
- Windmill; water well; spring
- Mine shaft; adit or cave; mine, quarry; gravel pit
- Campground; picnic area; U. S. location monument
- Ruins; cliff dwelling
- Distorted surface: strip mine, lava; sand
- Contours: index; intermediate; supplementary
- Bathymetric contours: index; intermediate
- Stream, lake; perennial; intermittent
- Rapids, large and small; falls, large and small
- Area to be submerged; marsh; swamp
- Land subject to controlled inundation; woodland
- Scrub; mangrove
- Orchard; vineyard

A pamphlet describing topographic maps is available on request



INTERIOR—GEOLOGICAL SURVEY, RESTON, VIRGINIA—1982

KILOMETERS 1 0 1 2 3 4 5 6 7 8 9 10 11 12 13 14 15 16 17 18 19 20
MILES 0 1 2 3 4 5 6 7 8 9 10 11 12 13

SCALE 1:100 000
1 CENTIMETER ON THE MAP REPRESENTS 1 KILOMETER ON THE GROUND
CONTOUR INTERVAL 40 METERS
SUPPLEMENTARY CONTOUR INTERVAL 20 METERS

PULLMAN, WASHINGTON—IDAHO

N4630-W11700/30X60

1982