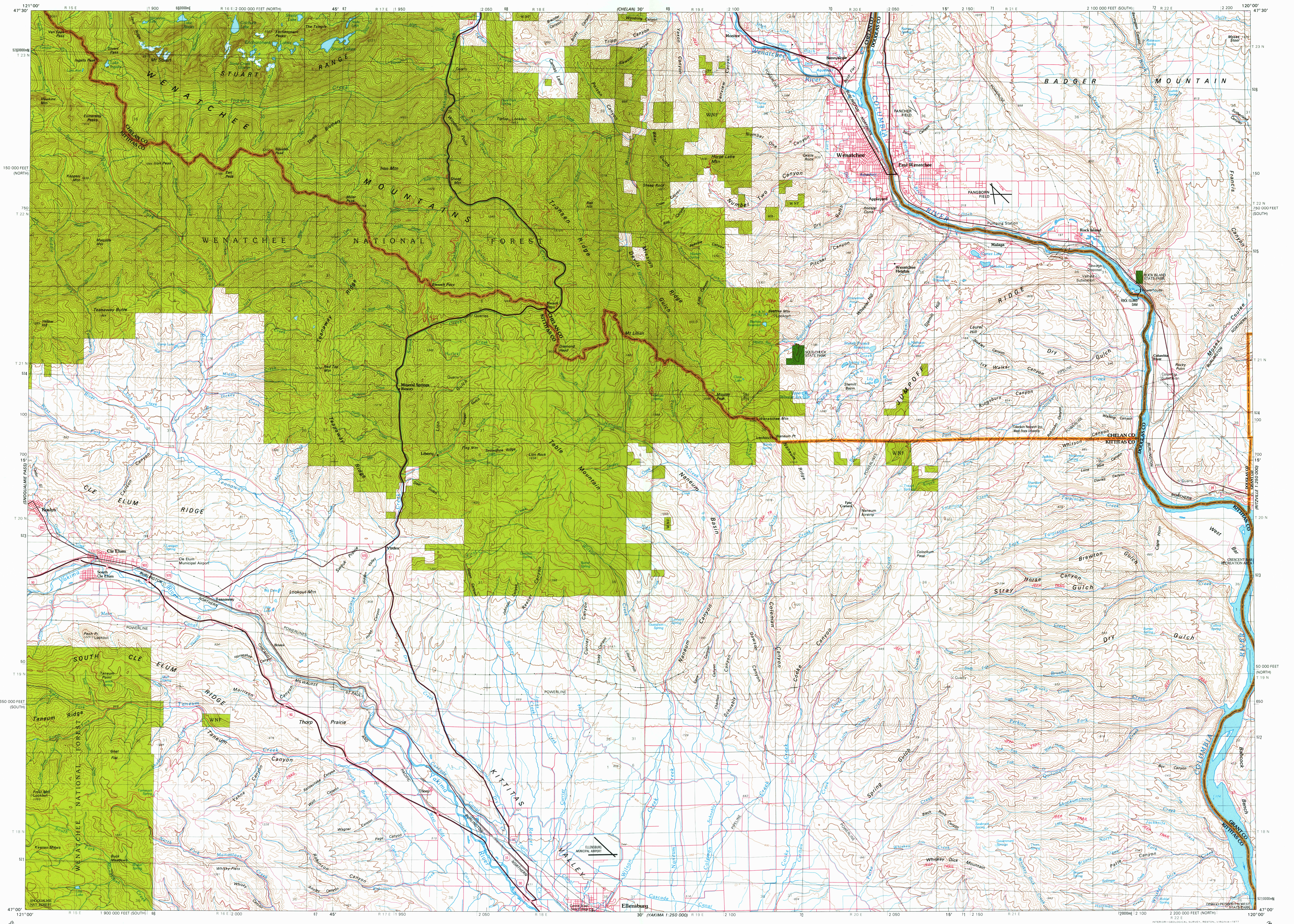


GRANVILLE RIVER
1:250 000
1:250 000
1:250 000

UNITED STATES
DEPARTMENT OF THE INTERIOR
GEOLOGICAL SURVEY

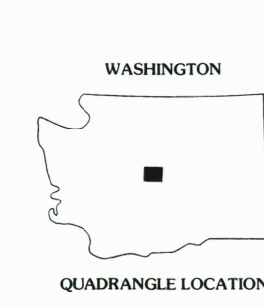
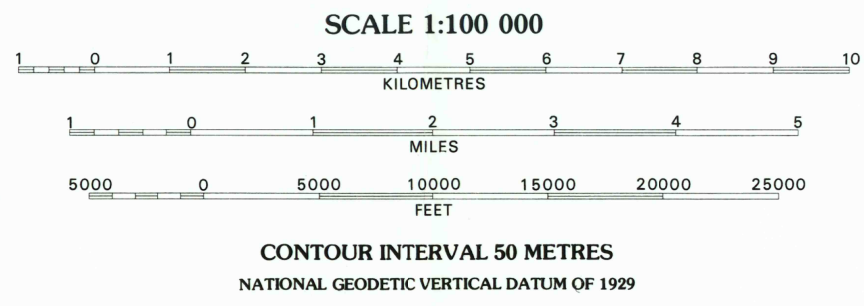
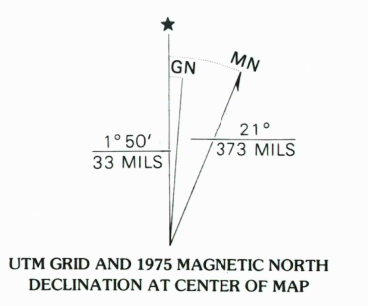
WENATCHEE QUADRANGLE
WASHINGTON
1:100 000-SCALE SERIES (TOPOGRAPHIC)



Mapped, edited, and published by the Geological Survey
Compiled in 1975 from USGS 1:24 000 and 1:62 500-scale
topographic maps dated 1958-1966. See index for dates of individual maps
Planimetry revised from aerial photographs taken 1973
Revised information not field checked
Projection and 10 000-meter grid, zone 10: Universal
Transverse Mercator, 1927 North American datum
50 000-foot grid ticks based on Washington coordinate
system, south and north zones

INDEX TO 1:24 000 AND 1:62 500-SCALE MAPS									
1	2	3	4	5	6	7	8	9	10
11	12	13	14	15	16	17	18	19	20
21	22	23	24	25	26	27	28	29	30

1 Mount Stuart—1961
2 Liberty—1961
3 Wenatchee—1966
4 Rock Island—1966
5 Malaga NE—1966
6 Malaga SW—1966
7 Wenatchee Heights—1966
8 Rock Island Dam—1966
9 Cle Elum—1958
10 Thompson—1958
11 Narem Canyon—1966
12 Colocum Pass—1966
13 Sney Gulch—1966
14 West Butte—1966
15 Thompson—1958
16 Elensburg North—1958
17 Colocum Pass SW—1966
18 Colocum Pass SE—1966
19 Wenatchee Heights—1966
20 Rock Island Dam—1966
21 Cle Elum—1958
22 Cape Horn SE—1966



- LEGEND
- Village or locality
 - Landmark building
 - Perennial stream, lake
 - Intermittent stream, lake
 - Public park or recreation area
 - National, State forest or game land area
 - Other public area or military or Indian reservation

- ROAD CLASSIFICATION
- Primary highway, hard surface
 - Secondary highway, hard surface
 - Light-duty road, hard or improved surface
 - Unimproved road
 - Trail
- Interstate Route U.S. Route State Route

WENATCHEE, WASH.
SE/4 WENATCHEE (NL 10-31 1:250 000-SCALE MAP
N4700-W12000/30X60

This map complies with national map accuracy standards
FOR SALE BY U.S. GEOLOGICAL SURVEY, DENVER, COLORADO 80225, OR RESTON, VIRGINIA 22092

