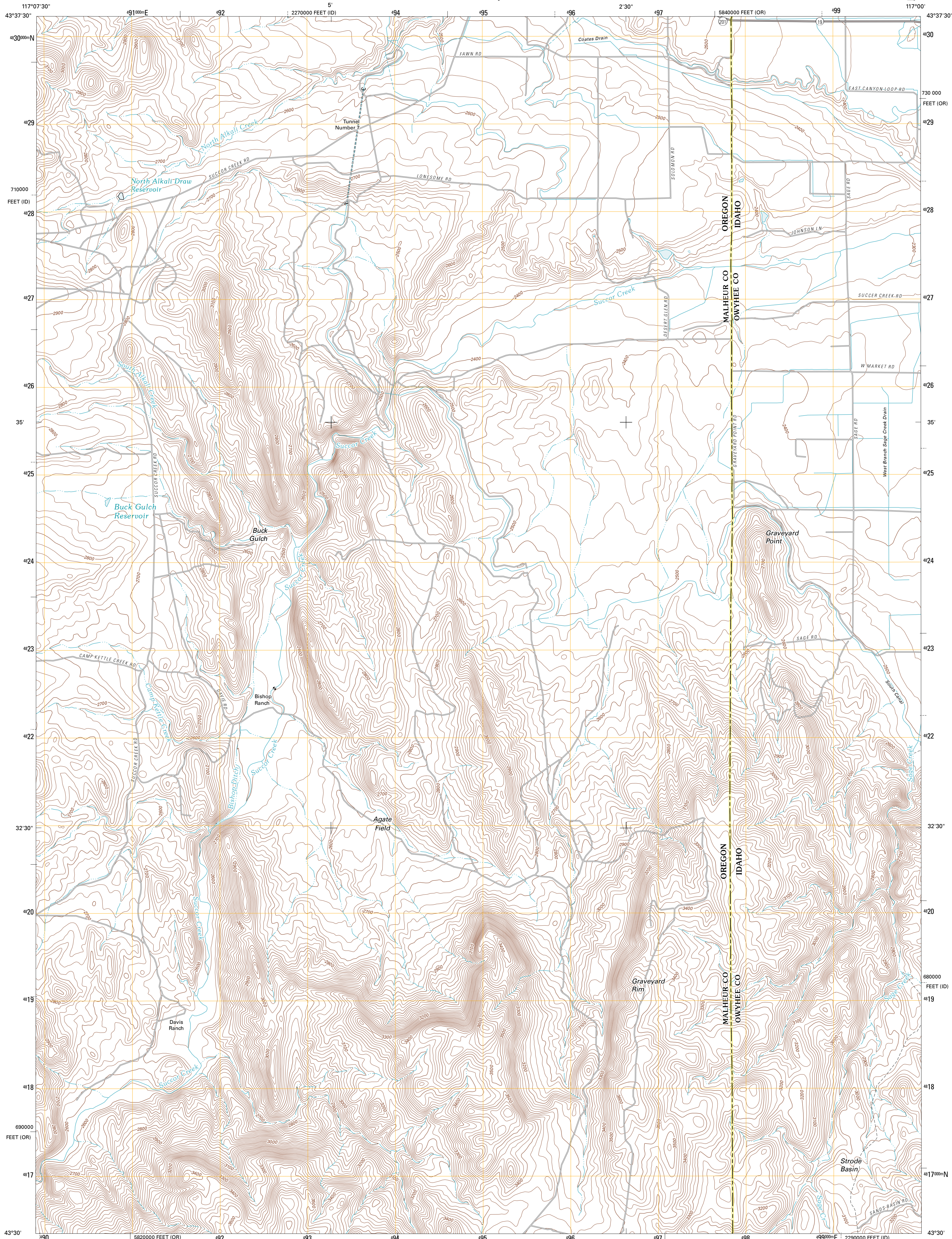




U.S. DEPARTMENT OF THE INTERIOR  
U. S. GEOLOGICAL SURVEY

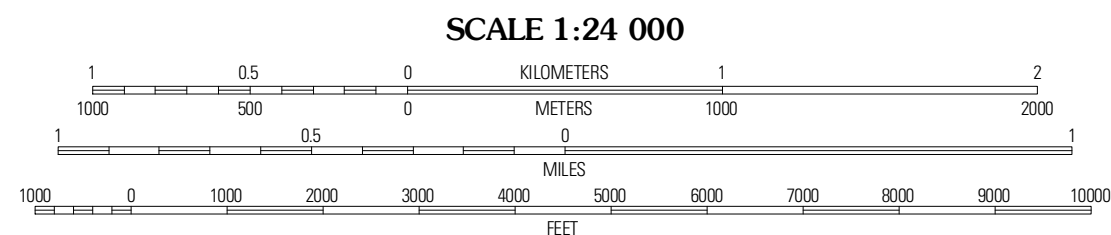
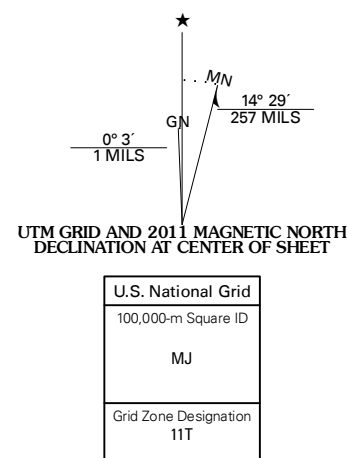


GRAVEYARD POINT QUADRANGLE  
IDAHO-OREGON  
7.5-MINUTE SERIES

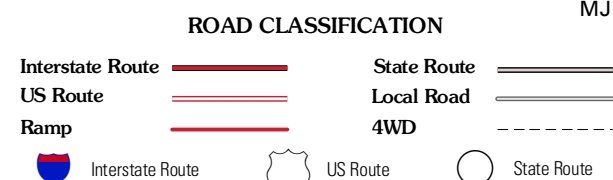
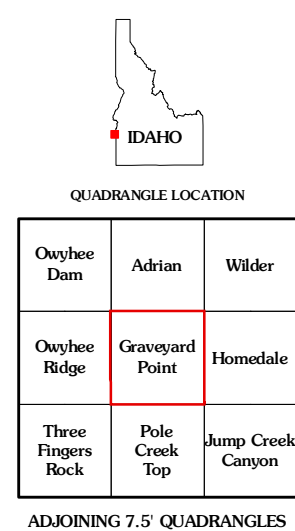


Produced by the United States Geological Survey  
North American Datum of 1983 (NAD83)  
World Geodetic System of 1984 (WGS84). Projection and  
1 000-meter grid: Universal Transverse Mercator, Zone 11T  
10 000-foot ticks: Oregon Coordinate System of 1983 (south  
zone), Idaho Coordinate System of 1983 (west zone)

Imagery.....NAIP, July 2009  
Roads.....©2006-2010 Tide Atlas  
Names.....GNIS, 2010  
Hydrography.....National Hydrography Dataset, 2009  
Contours.....National Elevation Dataset, 2000  
Boundaries.....Census, IBWC, IBC, USGS, 1972 - 2010



CONTOUR INTERVAL 20 FEET  
NORTH AMERICAN VERTICAL DATUM OF 1988  
This map was produced to conform with version 0.5.10  
of the USGS US Topo Product Standard.  
A metadata file associated with this product is draft version 0.5.16



GRAVEYARD POINT, ID-OR  
2011