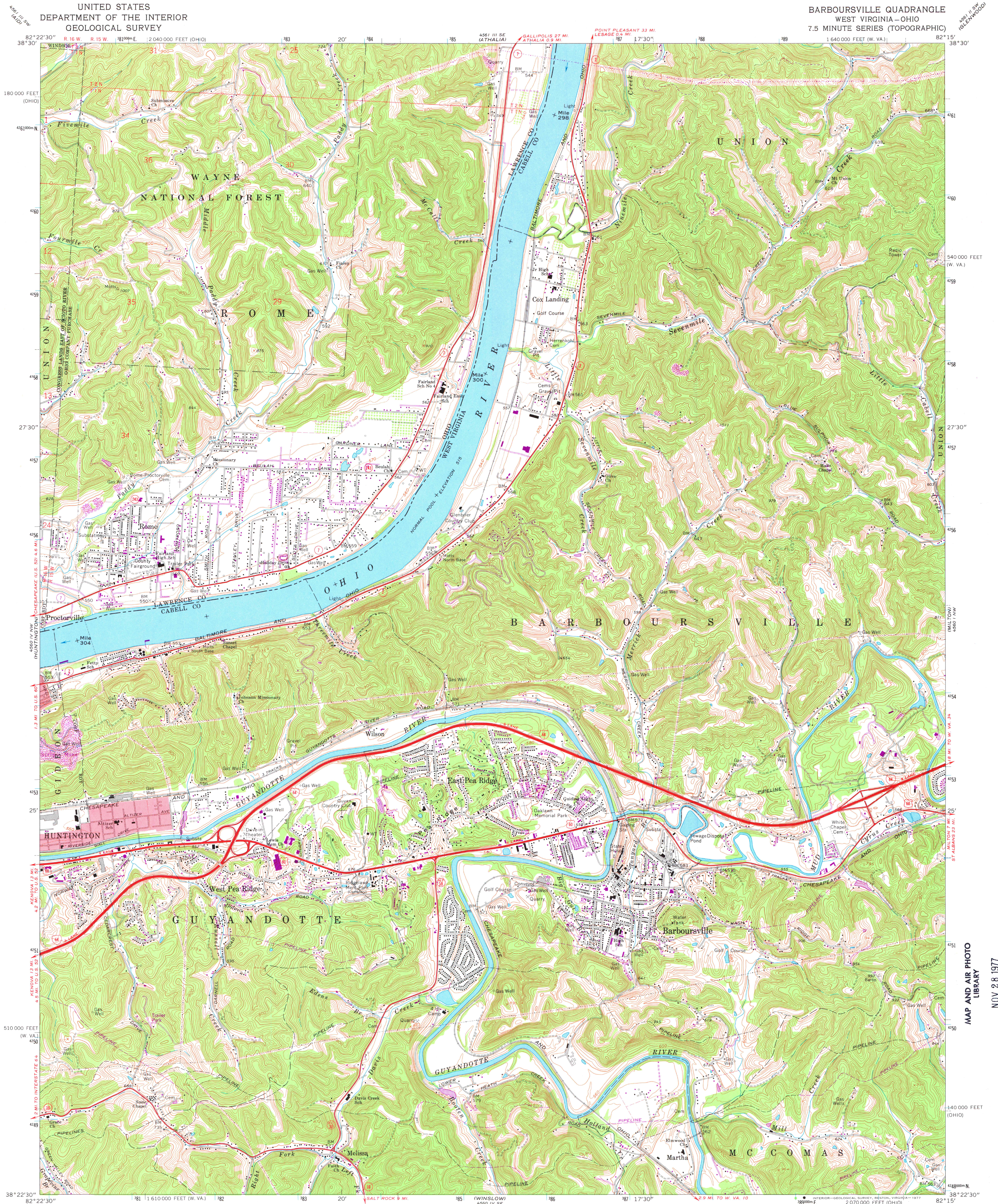
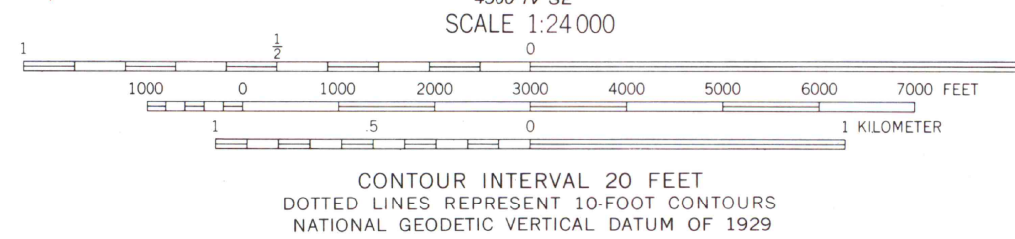
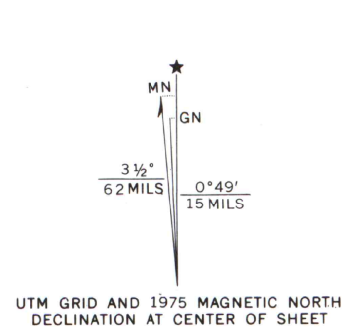


UNITED STATES
DEPARTMENT OF THE INTERIOR
GEOLOGICAL SURVEY

BARBOURSVILLE QUADRANGLE
WEST VIRGINIA—OHIO
7.5 MINUTE SERIES (TOPOGRAPHIC)
1 640 000 FEET (W. VA.)



Maped, edited, and published by the Geological Survey
in cooperation with State of West Virginia agencies
Revised in cooperation with State of Ohio agencies
Control by USGS, USC&GS, and USCE
Topography by photogrammetric methods from aerial
photographs taken 1956. Field checked 1957. Revised
from aerial photographs taken 1967. Field checked 1968.
Polyconic projection. 1927 North American datum. 10,000-foot grids based on
W. Va. coordinate system, south zone, and Ohio coordinate system, south zone
1000-meter Universal Transverse Mercator grid ticks, zone 17, shown in blue.
Fine red dashed lines indicate selected fence and field lines where
generally visible on aerial photographs. This information is unchecked.
The state boundary as shown represents the approximate position of the
low water line as determined from U.S. Corps of Engineers, Ohio River
charts, surveyed 1914, and supplementary information.
Red tint indicates areas in which only landmark buildings are shown.
Land lines based on the Ohio River base. Dotted land lines established
by private subdivision of Ohio Company Purchase.



THIS MAP COMPLIES WITH NATIONAL MAP ACCURACY STANDARDS
FOR SALE BY U. S. GEOLOGICAL SURVEY, RESTON, VIRGINIA 20192
A FOLDER DESCRIBING TOPOGRAPHIC MAPS AND SYMBOLS IS AVAILABLE ON REQUEST

Revisions shown in purple compiled in cooperation with
States of West Virginia and Ohio agencies from aerial
photographs taken 1975. This information not field checked

ROAD CLASSIFICATION
Primary highway, all weather, hard surface
Light-duty road, all weather, improved surface
Unimproved road, fair or dry weather

Interstate Route U. S. Route State Route

BARBOURSVILLE, W. VA.—OHIO
N3822.5—W8215.7.5

1968
PHOTOREVISED 1975
AMS 4560 IV NE—SERIES Y854

MAP AND AIR PHOTO
LIBRARY
NOV 28 1977
University of Wisconsin
Madison