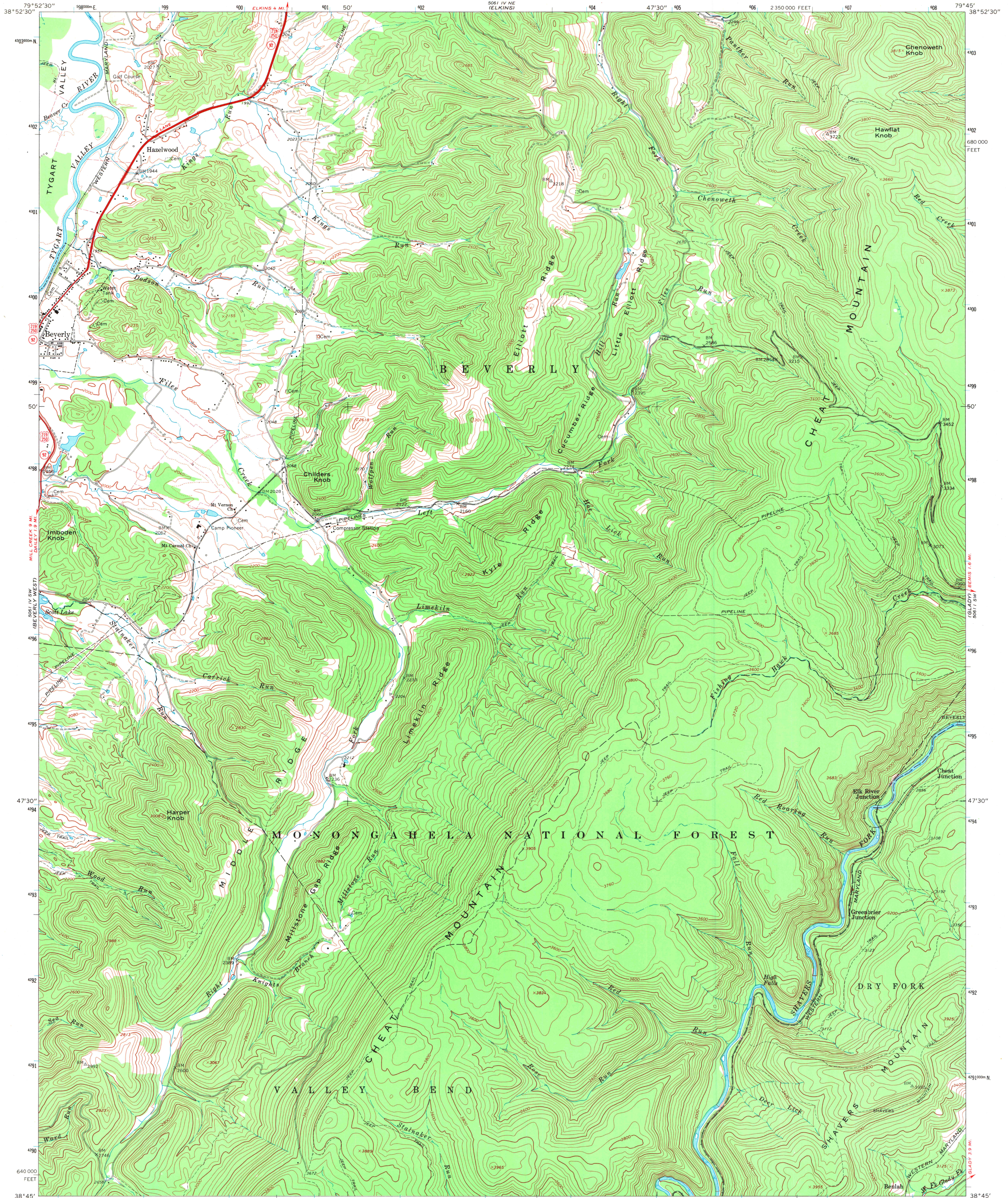
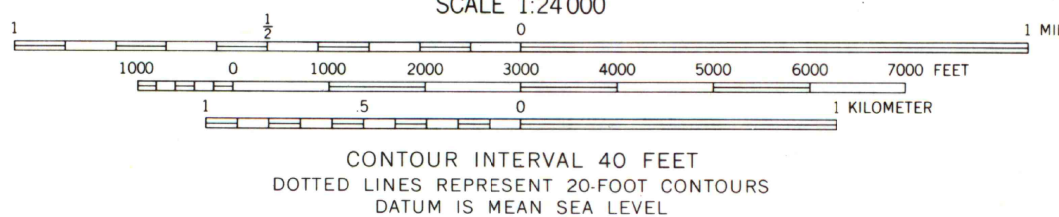
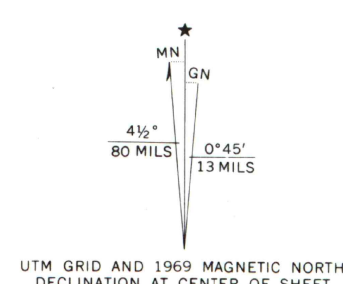


UNITED STATES
DEPARTMENT OF THE INTERIOR
GEOLOGICAL SURVEY

BEVERLY EAST QUADRANGLE
WEST VIRGINIA—RANDOLPH CO.
7.5 MINUTE SERIES (TOPOGRAPHIC)
SE/4 ELKINS 15' QUADRANGLE



Mapped, edited, and published by the Geological Survey
Control by USGS and USC&GS
Topography by photogrammetric methods from aerial
photographs taken 1964 and 1965. Field checked 1969
Polyconic projection. 1927 North American datum
10,000-foot grid based on West Virginia coordinate
system, south zone
1000-meter Universal Transverse Mercator grid ticks,
zone 17, shown in blue
Fine red dashed lines indicate selected fence and field lines where
generally visible on aerial photographs. This information is unchecked



ROAD CLASSIFICATION
Primary highway, all weather, hard surface
Light-duty road, all weather, improved surface
Unimproved road, fair or dry weather
U.S. Route
State Route



MAR 24 1972

BEVERLY EAST, W. VA.
SE/4 ELKINS 15' QUADRANGLE
N3845—W7945/7.5

1969

Univers, of Wisconsin

AMS 5061 IV SE—SERIES W854

THIS MAP COMPLIES WITH NATIONAL MAP ACCURACY STANDARDS
FOR SALE BY U. S. GEOLOGICAL SURVEY, WASHINGTON, D. C. 20242
A FOLDER DESCRIBING TOPOGRAPHIC MAPS AND SYMBOLS IS AVAILABLE ON REQUEST