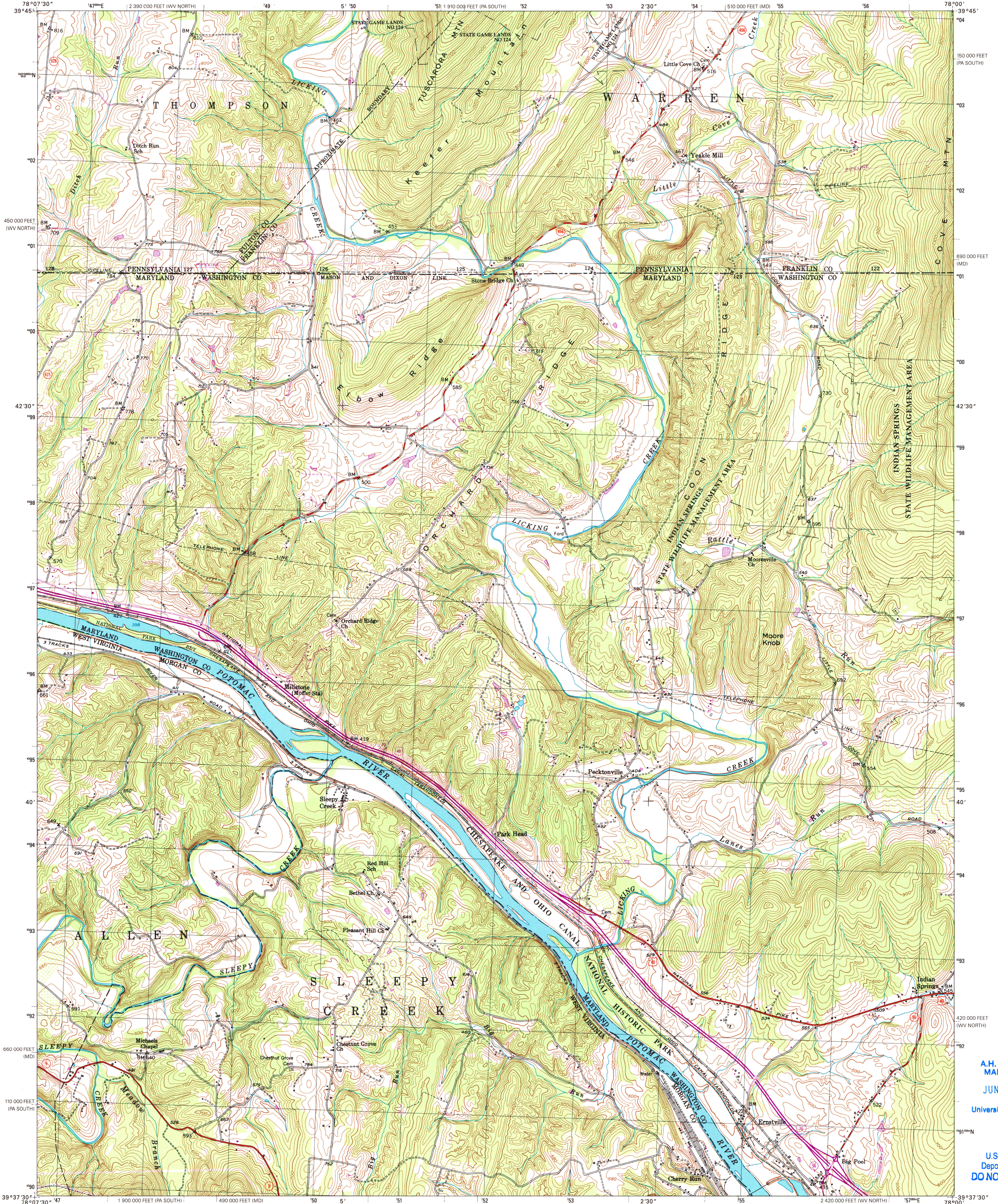




U.S. DEPARTMENT OF THE INTERIOR  
U.S. GEOLOGICAL SURVEY

CHERRY RUN QUADRANGLE  
WEST VIRGINIA-MARYLAND-PENNSYLVANIA  
7.5-MINUTE SERIES (TOPOGRAPHIC)



A.H. ROBINSON  
MAP LIBRARY

JUN 12 2003

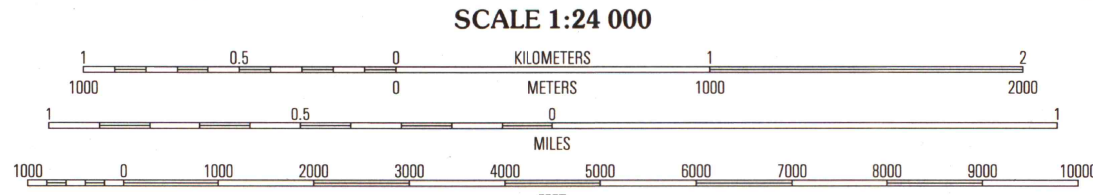
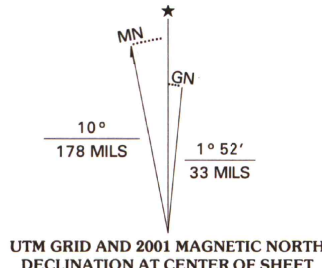
University of Wisconsin  
Madison

U.S. Regional  
Depository Copy  
DO NOT DISCARD

Produced by the United States Geological Survey  
Topography compiled 1947. Planimetry derived from imagery taken 1971 and other sources. Photoinspected using imagery dated 1998; no major culture or drainage changes observed. Survey control current as of 1951. Boundaries revised 2001.

North American Datum of 1927 (NAD 27)  
Projection: Maryland coordinate system  
(Lambert conformal conic)  
10 000-foot ticks: Maryland coordinate system, West Virginia coordinate system, north zone, and Pennsylvania coordinate system, south zone  
1000-meter Universal Transverse Mercator grid, zone 17  
North American Datum of 1983 (NAD 83) is shown by dashed corner ticks. The values of the shift between NAD 27 and NAD 83 for 7.5-minute intersections are obtainable from National Geodetic Survey NADCON software.

There may be private inholdings within the boundaries of the National or State reservations shown on this map. Information shown in purple may not meet USGS content standards and may conflict with previously mapped contours.



CONTOUR INTERVAL 20 FEET  
NATIONAL GEODETIC VERTICAL DATUM OF 1929  
(TO CONVERT ELEVATIONS TO THE NORTH AMERICAN VERTICAL DATUM OF 1988, SUBTRACT 1 FOOT)  
TO CONVERT FROM FEET TO METERS, MULTIPLY BY 0.3048

THIS MAP COMPLIES WITH NATIONAL MAP ACCURACY STANDARDS  
FOR SALE BY U.S. GEOLOGICAL SURVEY, P.O. BOX 25286, DENVER, COLORADO 80225  
A FOLDER DESCRIBING TOPOGRAPHIC MAPS AND SYMBOLS IS AVAILABLE ON REQUEST



QUADRANGLE LOCATION

ROAD CLASSIFICATION	
Primary highway hard surface .....	Light-duty road, hard or improved surface .....
Secondary highway hard surface .....	Unimproved road .....
Interstate Route	U.S. Route
	State Route

1	2	3	1 Needmore
4	5	6	2 Big Cove Tannery
7	8	9	3 Hancock
			4 Hancock
			5 Clear Spring
			6 Stollers Crossroads
			7 Big Pool
			8 Hedgesville

CHERRY RUN, WV-MD-PA  
1998

NIMA 5363 II NE-SERIES V833