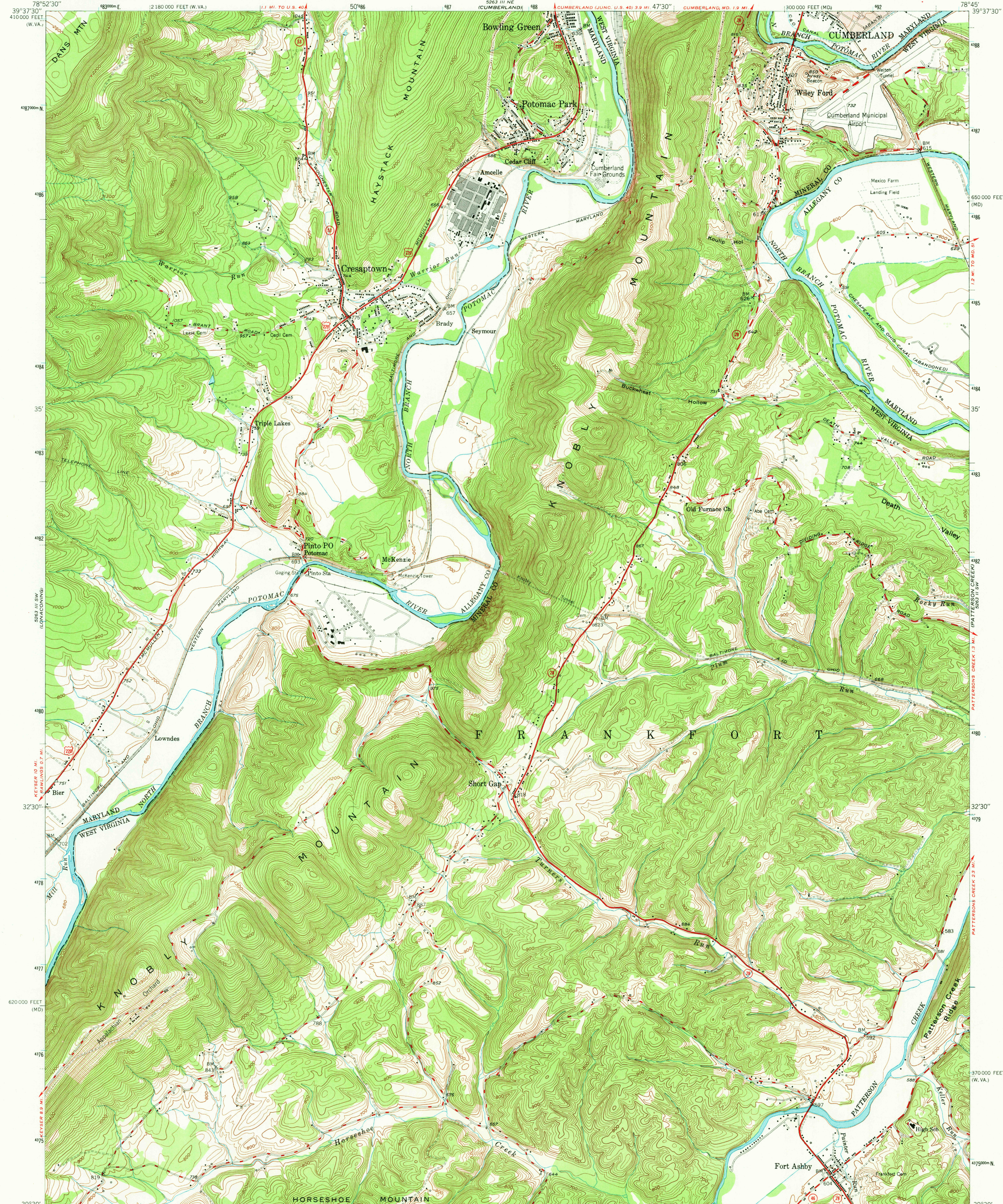


UNITED STATES  
DEPARTMENT OF THE INTERIOR  
GEOLOGICAL SURVEY

CRESAPTOWN QUADRANGLE  
WEST VIRGINIA-MARYLAND  
7.5 MINUTE SERIES (TOPOGRAPHIC)  
SE/4 FROSTBURG 15 QUADRANGLE



Mapped, edited, and published by the Geological Survey  
Control by USGS and USC&GS  
Topography from aerial photographs by multiplex methods  
Aerial photographs taken 1947. Field check 1949  
Polyconic projection. 1927 North American datum  
10,000-foot grids based on Maryland coordinate system  
and West Virginia coordinate system, north zone  
Red tint indicates area in which only  
landmark buildings are shown  
1000-meter Universal Transverse Mercator grid ticks,  
zone 17, shown in blue

SCALE 1:24,000  
1000 0 1000 2000 3000 4000 5000 6000 7000 FEET  
1 0 1 2 3 4 5 6 7 8 9 10 KILOMETER  
CONTOUR INTERVAL 20 FEET  
DATUM IS MEAN SEA LEVEL  
THIS MAP COMPLIES WITH NATIONAL MAP ACCURACY STANDARDS  
FOR SALE BY U.S. GEOLOGICAL SURVEY, WASHINGTON, D. C. 20242  
A FOLDER DESCRIBING TOPOGRAPHIC MAPS AND SYMBOLS IS AVAILABLE ON REQUEST

ROAD CLASSIFICATION  
HARD-SURFACE ALL WEATHER ROADS DRY WEATHER ROADS  
Heavy-duty 2 LANE 18 LANE Improved dirt  
Medium-duty 4 LANE 18 LANE Unimproved dirt  
Loose-surface, graded, or narrow hard-surface  
U. S. Route State Route  
SEP 13 1978  
CRESAPTOWN, W. VA.-MD.  
SE/4 FROSTBURG 15 QUADRANGLE  
N3930-W7845/7.5  
1949  
AMS 5263 III SE-SERIES V854

3665