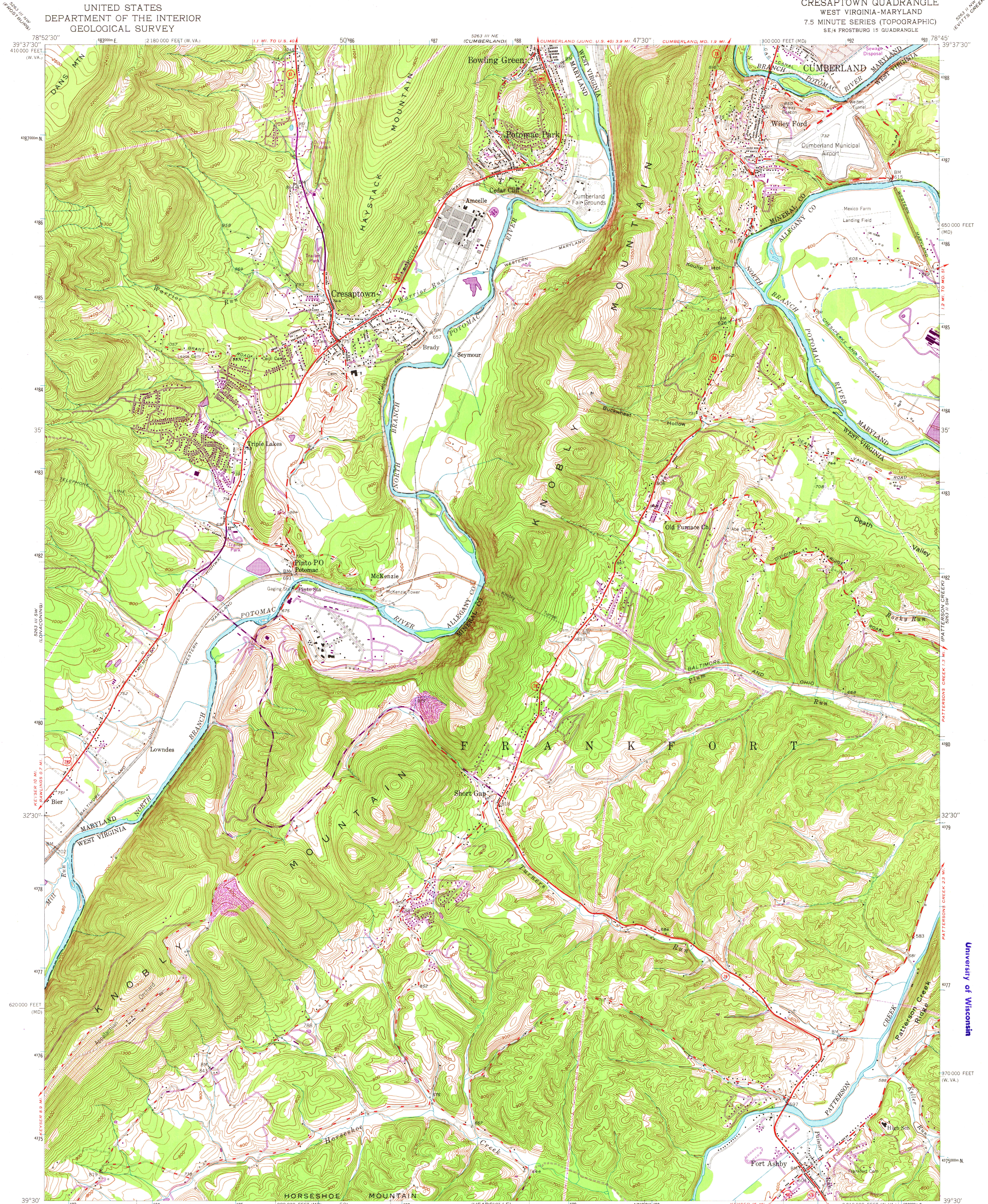
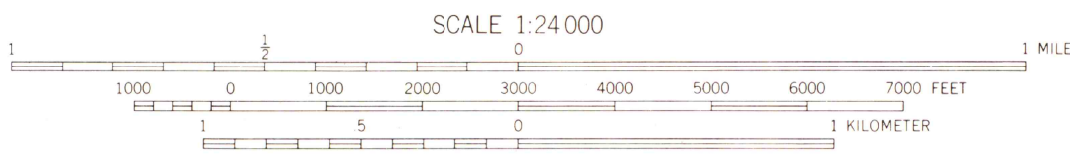
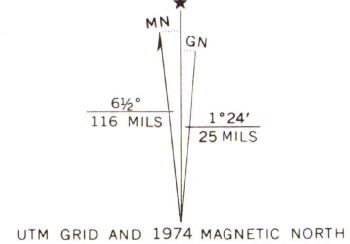


UNITED STATES
DEPARTMENT OF THE INTERIOR
GEOLOGICAL SURVEY

CRESAPTOWN QUADRANGLE
WEST VIRGINIA-MARYLAND
7.5 MINUTE SERIES (TOPOGRAPHIC)
SE/4 FROSTBURG 15 QUADRANGLE



Mapped, edited, and published by the Geological Survey
Control by USGS and USC&GS
Topography from aerial photographs by multiplex methods
Aerial photographs taken 1947. Field check 1949
Polyconic projection. 1927 North American datum
10,000-foot grids based on Maryland coordinate system
and West Virginia coordinate system, north zone
Red tint indicates area in which only
landmark buildings are shown
1000-meter Universal Transverse Mercator grid ticks,
zone 17, shown in blue
Revisions shown in purple compiled from aerial photographs
taken 1974. This information not field checked



CONTOUR INTERVAL 20 FEET
NATIONAL GEODETIC VERTICAL DATUM OF 1929
THIS MAP COMPLIES WITH NATIONAL MAP ACCURACY STANDARDS
FOR SALE BY U.S. GEOLOGICAL SURVEY, RESTON, VIRGINIA 22092
A FOLDER DESCRIBING TOPOGRAPHIC MAPS AND SYMBOLS IS AVAILABLE ON REQUEST



ROAD CLASSIFICATION
Heavy-duty ALL WEATHER ROADS DRY WEATHER ROADS
Medium-duty ALL WEATHER ROADS Improved dirt
Loose-surface, graded, or narrow hard-surface Unimproved dirt
U. S. Route State Route

CRESAPTOWN, W. VA.-MD.
SE/4 FROSTBURG 15 QUADRANGLE
N 3930-W 7845/7.5

1949
PHOTOREVISED 1974
AMS 5263 III SE-SERIES V854

University of Wisconsin

MAP AND AIR PHOTO
LIBRARY
MAR 23 1976