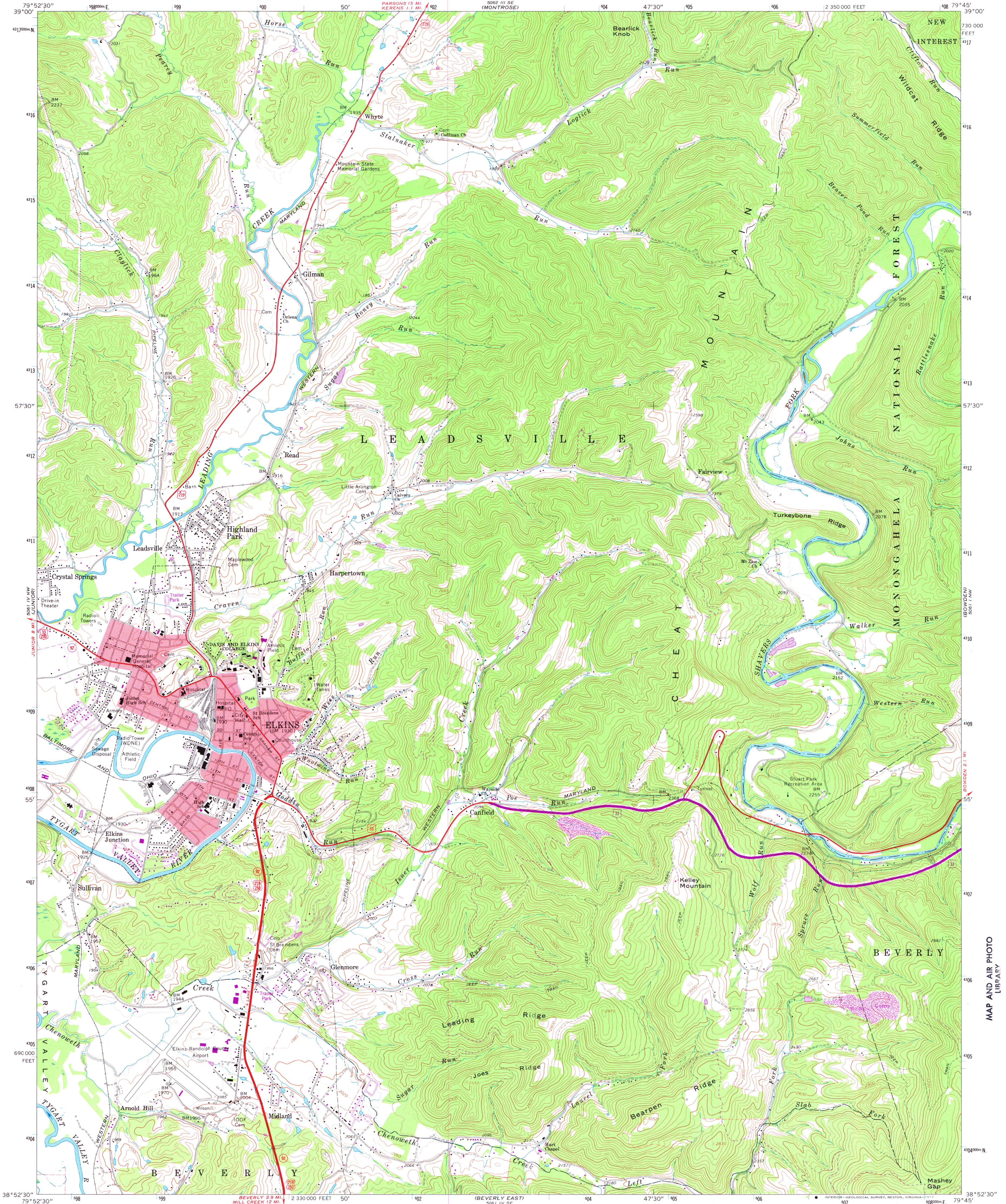
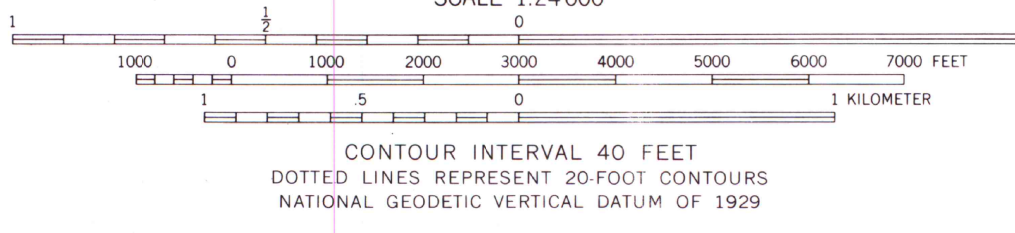
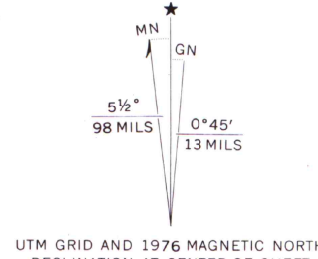


UNITED STATES  
DEPARTMENT OF THE INTERIOR  
GEOLOGICAL SURVEY

ELKINS QUADRANGLE  
WEST VIRGINIA—RANDOLPH CO.  
7.5 MINUTE SERIES (TOPOGRAPHIC)  
NE/4 ELKINS 15' QUADRANGLE



Mapped, edited, and published by the Geological Survey  
Control by USGS and USC&GS  
Topography by photogrammetric methods from aerial photographs  
taken 1964 and 1965. Field checked 1969  
Polyconic projection. 1927 North American datum  
10,000-foot grid based on West Virginia coordinate system, south zone  
1000-meter Universal Transverse Mercator grid ticks,  
zone 17, shown in blue  
Fine red dashed lines indicate selected fence and field lines where  
generally visible on aerial photographs. This information is unchecked  
Red tint indicates areas in which only landmark buildings are shown



ROAD CLASSIFICATION  
Primary highway, all weather, hard surface  
Light-duty road, all weather, improved surface  
Unimproved road, fair or dry weather  
U. S. Route  
State Route



ELKINS, W. VA.  
NE/4 ELKINS 15' QUADRANGLE  
N3852.5—W7945.7.5

1969  
PHOTOREVISED 1976  
AMS 5061 IV NE—SERIES W854

THIS MAP COMPLIES WITH NATIONAL MAP ACCURACY STANDARDS  
FOR SALE BY U. S. GEOLOGICAL SURVEY, RESTON, VIRGINIA 22092  
A FOLDER DESCRIBING TOPOGRAPHIC MAPS AND SYMBOLS IS AVAILABLE ON REQUEST

Revisions shown in purple compiled in cooperation with  
State of West Virginia agencies from aerial photographs  
taken 1976. This information not field checked

MAP AND AIR PHOTO  
LIBRARY  
NOV 23 1977  
University of Wisconsin  
Madison