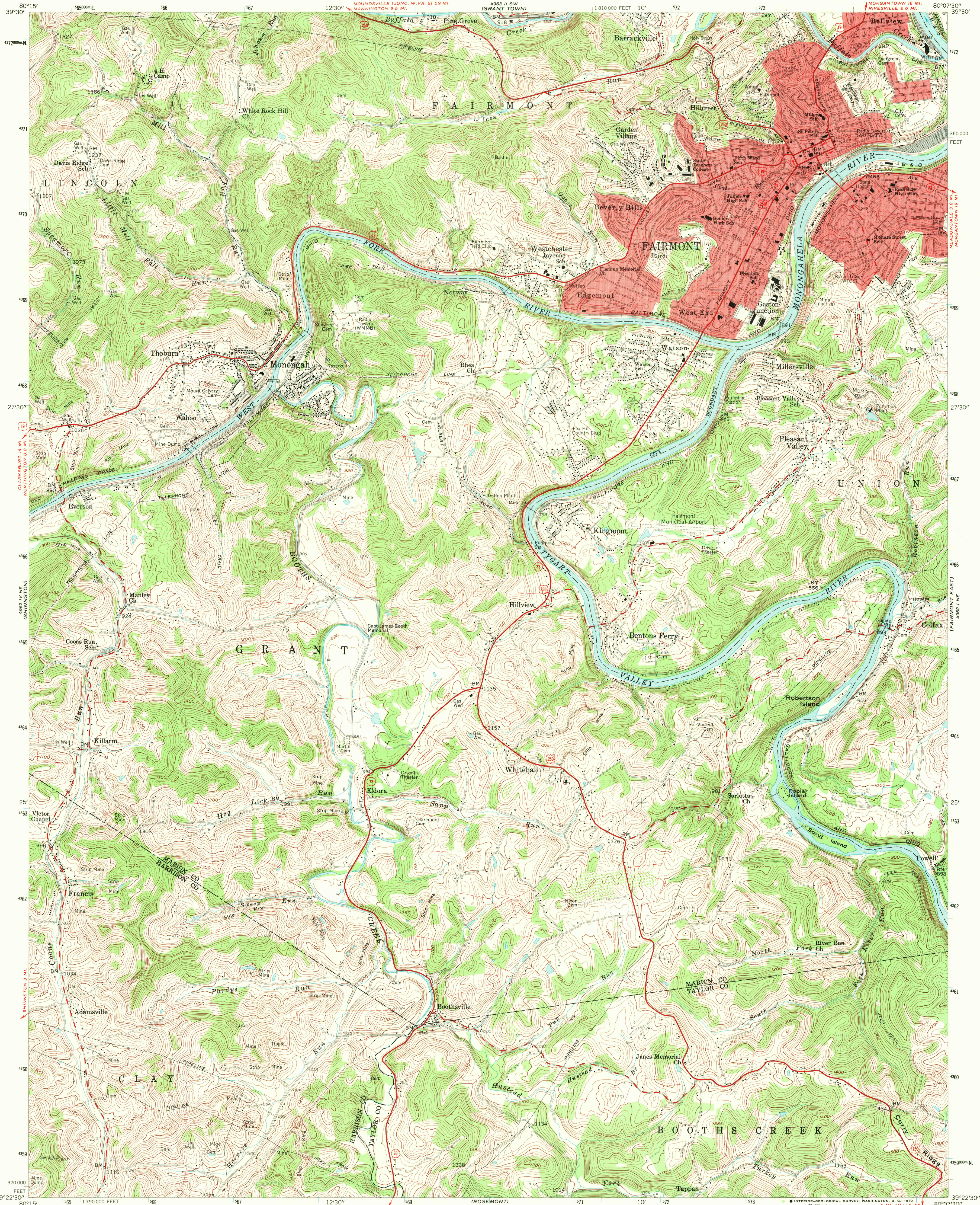


UNITED STATES  
DEPARTMENT OF THE INTERIOR  
GEOLOGICAL SURVEY

FAIRMONT WEST QUADRANGLE  
WEST VIRGINIA  
7.5 MINUTE SERIES (TOPOGRAPHIC)  
NW 1/4 FAIRMONT 15' QUADRANGLE



Mapped, edited, and published by the Geological Survey

Control by USGS and USC&GS

Topography from aerial photographs by photogrammetric methods

Aerial photographs taken 1955. Field check 1958

Polyconic projection. 1927 North American datum

10,000-foot grid based on West Virginia coordinate system,

north zone

1000-meter Universal Transverse Mercator grid ticks,

zone 17, shown in blue

Fine red dashed lines indicate selected fence and field lines

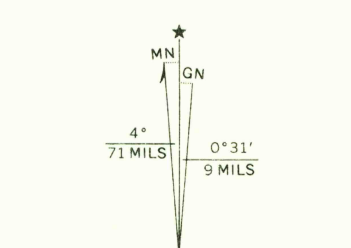
visible on aerial photographs. This information is unchecked

Red tint indicates areas in which only

landmark buildings are shown

Unlabeled wells are oil wells

Unchecked elevations are shown in brown



SCALE 1:24,000

1 1000 0 1000 2000 3000 4000 5000 6000 7000 FEET

1 5 0 1 KILOMETER

CONTOUR INTERVAL 20 FEET

DATUM IS MEAN SEA LEVEL

THIS MAP COMPLIES WITH NATIONAL MAP ACCURACY STANDARDS  
FOR SALE BY U. S. GEOLOGICAL SURVEY, WASHINGTON, D. C. 20242  
A FOLDER DESCRIBING TOPOGRAPHIC MAPS AND SYMBOLS IS AVAILABLE ON REQUEST

USGS  
Historical File  
Topographic Division

ROAD CLASSIFICATION  
Heavy-duty ——— Light-duty ———  
Medium-duty ——— Unimproved dirt ———  
U. S. Route ——— State Route ———

QUADRANGLE LOCATION

U.S.G.S.  
FILE COPY  
TOPOGRAPHIC DIVISION

FAIRMONT WEST, W. VA.

NW 1/4 FAIRMONT 15' QUADRANGLE

N 3922.5 - W 8007.5 / 7.5

1958

AMS 4962 I NW - SERIES V854

OCT 1 1970