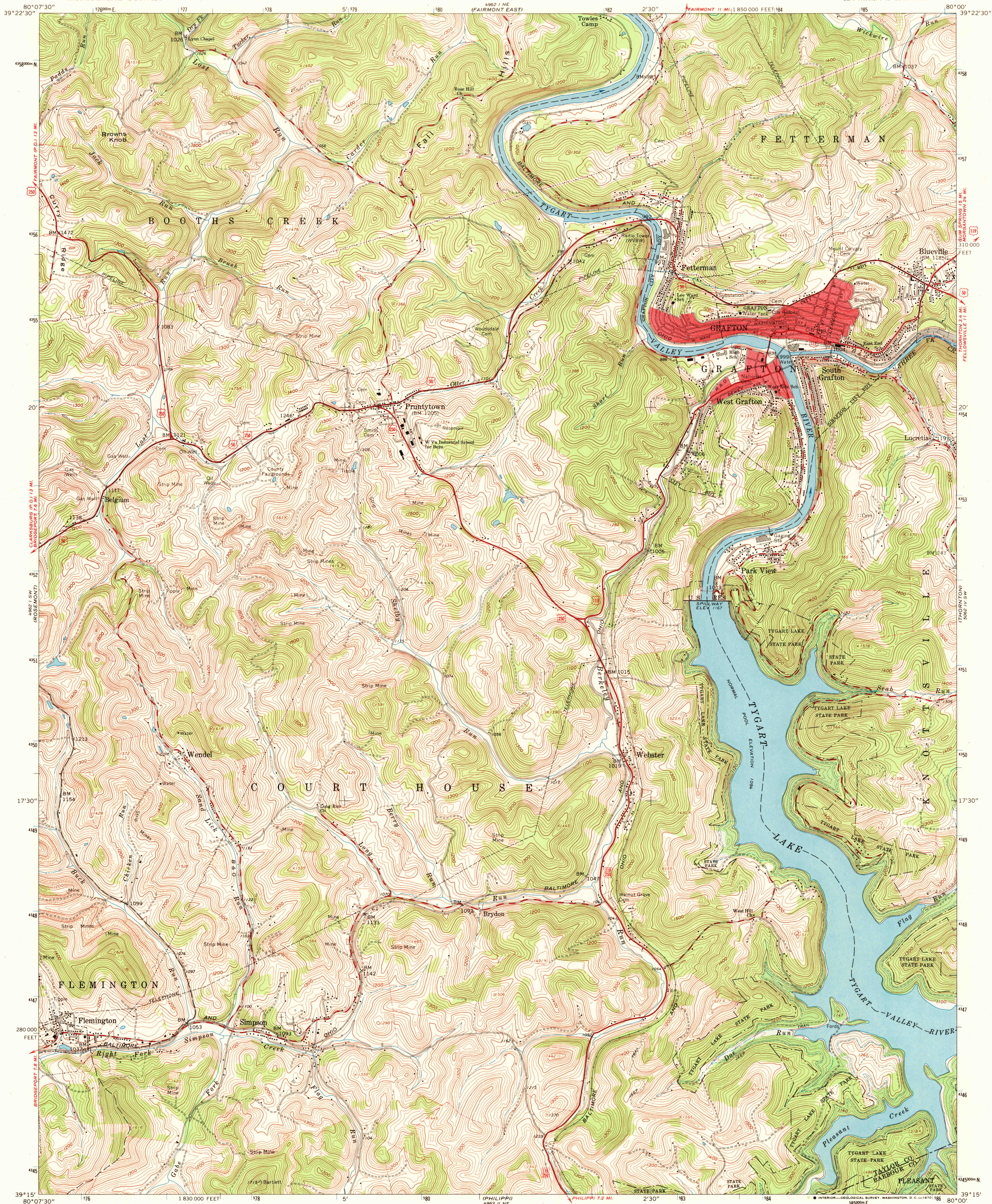
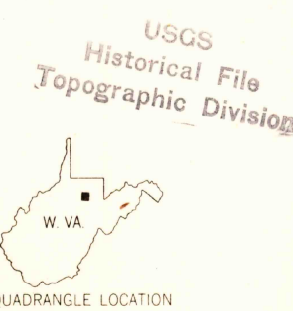
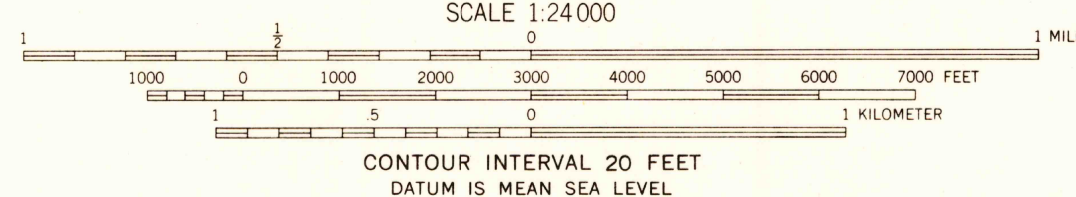
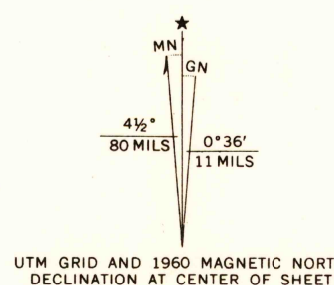


UNITED STATES
DEPARTMENT OF THE INTERIOR
GEOLOGICAL SURVEY

GRAFTON QUADRANGLE
WEST VIRGINIA
7.5 MINUTE SERIES (TOPOGRAPHIC)
SE 1/4 FAIRMONT 15' QUADRANGLE



Mapped, edited, and published by the Geological Survey
Control by USGS and USC&GS
Topography by photogrammetric methods from aerial
photographs taken 1957. Field checked 1960
Polyconic projection. 1927 North American datum
10,000-foot grid based on West Virginia coordinate system,
north zone
1000-meter Universal Transverse Mercator grid ticks,
zone 17, shown in blue
Fine red dashed lines indicate selected fence and field lines where
generally visible on aerial photographs. This information is unchecked
Red tint indicates areas in which only landmark buildings are shown
Area covered by dashed light-blue pattern is subject to controlled
inundation to 1167 feet



ROAD CLASSIFICATION
Heavy-duty ——— Light-duty ———
Medium-duty ——— Unimproved dirt ———
U.S. Route

GRAFTON, W. VA.
SE 1/4 FAIRMONT 15' QUADRANGLE
N3915—W8000/7.5
1960
AMS 4962 1 SE—SERIES V854

4175
MAR 24 1970