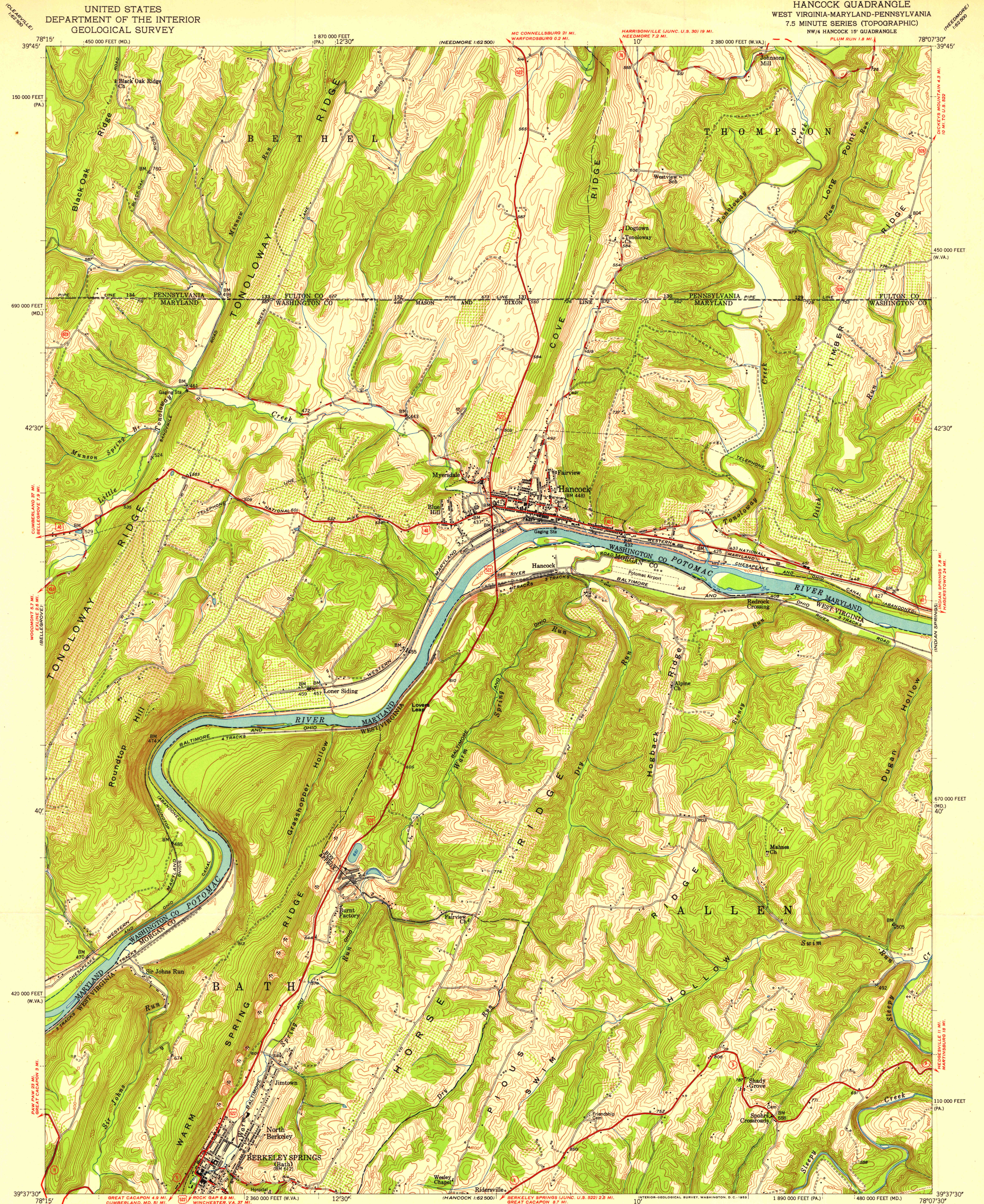


UNITED STATES
DEPARTMENT OF THE INTERIOR
GEOLOGICAL SURVEY

HANCOCK QUADRANGLE
WEST VIRGINIA-MARYLAND-PENNSYLVANIA
7.5 MINUTE SERIES (TOPOGRAPHIC)
NW/4 HANCOCK 15' QUADRANGLE

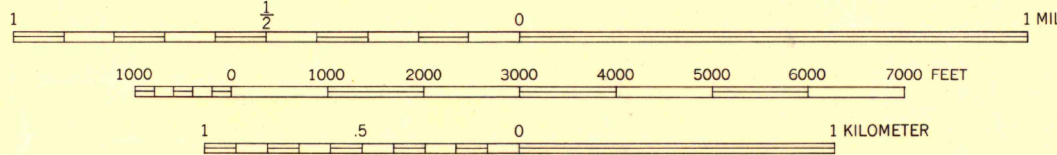


Mapped, edited, and published by the Geological Survey

Control by USGS and USC&GS

Topography from aerial photographs by multiplex methods
Aerial photographs taken 1947. Field check 1951

Polyconic projection. 1927 North American datum
10,000-foot grids based on West Virginia coordinate system,
north zone, Maryland coordinate system, and Pennsylvania
coordinate system, south zone



CONTOUR INTERVAL 20 FEET
DATUM IS MEAN SEA LEVEL

ROAD CLASSIFICATION
Heavy-duty 4 LANE 16 LANE Light-duty
Medium-duty 4 LANE 16 LANE Unimproved dirt
U.S. Route State Route



HANCOCK, W. VA.-MD.-PA.
NW/4 HANCOCK 15' QUADRANGLE
N3937.5-W7807.5/7.5

1951

THIS MAP COMPLIES WITH NATIONAL MAP ACCURACY STANDARDS
FOR SALE BY U. S. GEOLOGICAL SURVEY, WASHINGTON 25, D. C.
A FOLDER DESCRIBING TOPOGRAPHIC MAPS AND SYMBOLS IS AVAILABLE ON REQUEST