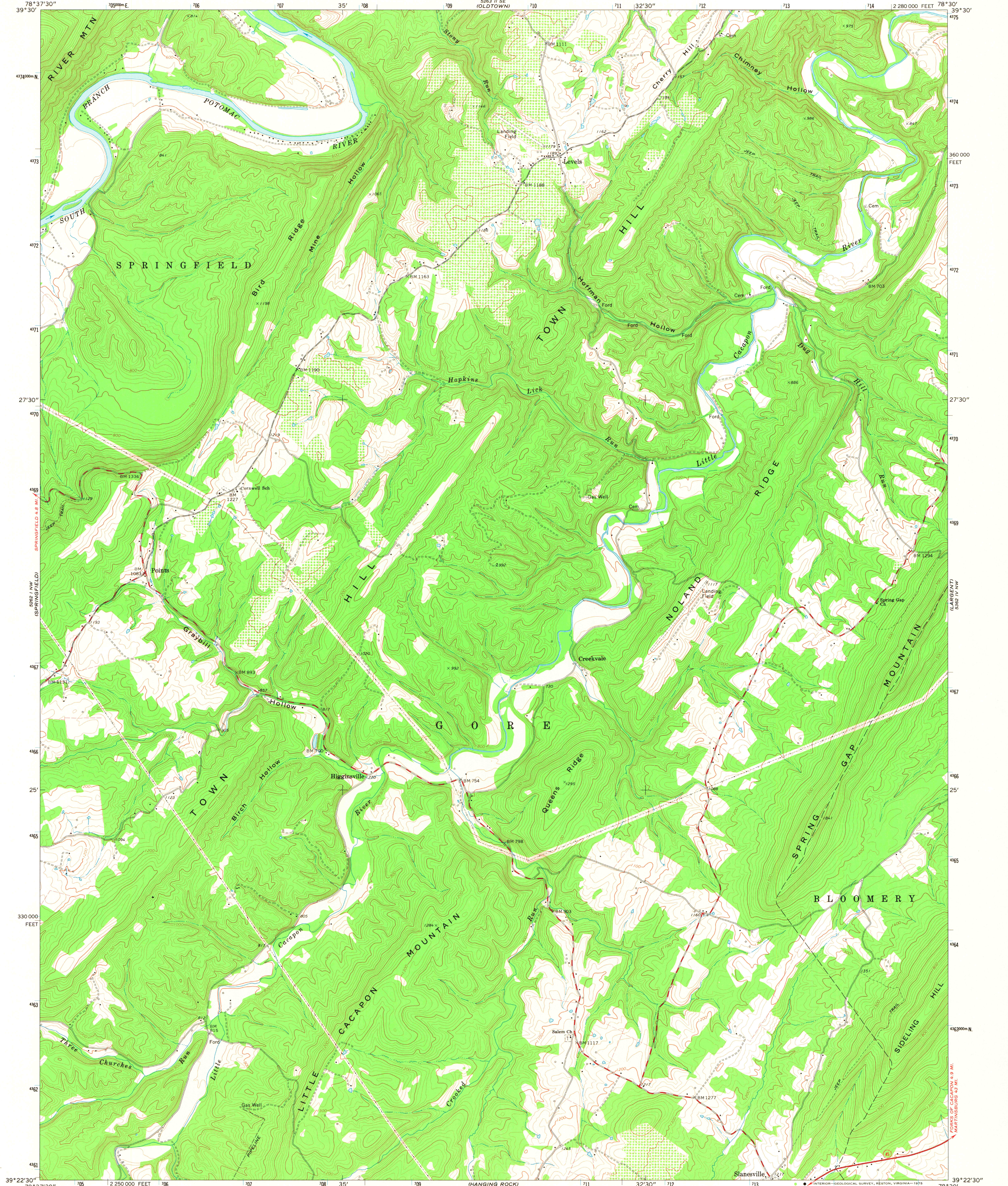


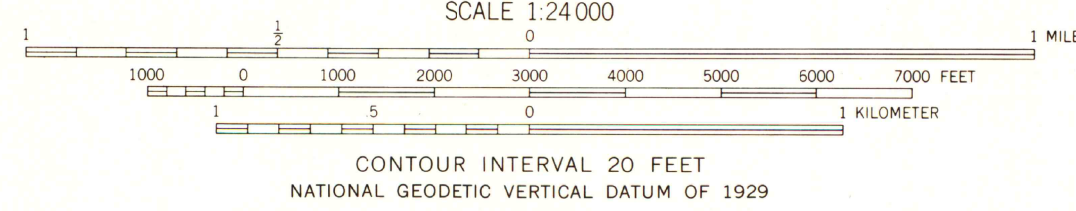
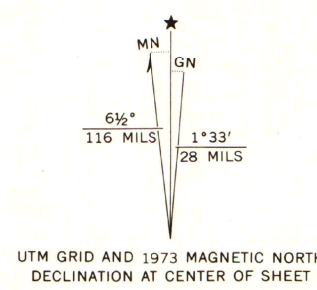
UNITED STATES
DEPARTMENT OF THE INTERIOR
GEOLOGICAL SURVEY

STATE OF WEST VIRGINIA
REPRESENTED BY THE
STATE OF WEST VIRGINIA GEOLOGICAL SURVEY
AND OTHER STATE AGENCIES

LEVELS QUADRANGLE
WEST VIRGINIA—HAMPSHIRE CO.
7.5 MINUTE SERIES (TOPOGRAPHIC)
NE/4 HANGING ROCK 15' QUADRANGLE



Mapped, edited, and published by the Geological Survey
Control by USGS and USC&GS
Topography by photogrammetric methods from aerial photographs
taken 1971. Field checked 1973
Projections and 10,000-foot grid ticks: West Virginia coordinate
system, north zone (Lambert conformal conic),
1000-meter Universal Transverse Mercator grid ticks,
zone 17, shown in blue. 1927 North American datum
Fine red dashed lines indicate selected fence and field lines where
generally visible on aerial photographs. This information is unchecked



ROAD CLASSIFICATION
Primary highway, hard surface
Secondary highway, hard surface
Light-duty road, hard or improved surface
Unimproved road
Interstate Route
U. S. Route
State Route

MAP AND AIR PHOTO
AUG 26 1975
University of Wisconsin

LEVELS, W. VA.
NE/4 HANGING ROCK 15' QUADRANGLE
N3922.5—W7830/7.5
1973
AMS 5262 1 NE—SERIES V854

THIS MAP COMPLIES WITH NATIONAL MAP ACCURACY STANDARDS
FOR SALE BY U. S. GEOLOGICAL SURVEY, RESTON, VIRGINIA 22092
A FOLDER DESCRIBING TOPOGRAPHIC MAPS AND SYMBOLS IS AVAILABLE ON REQUEST