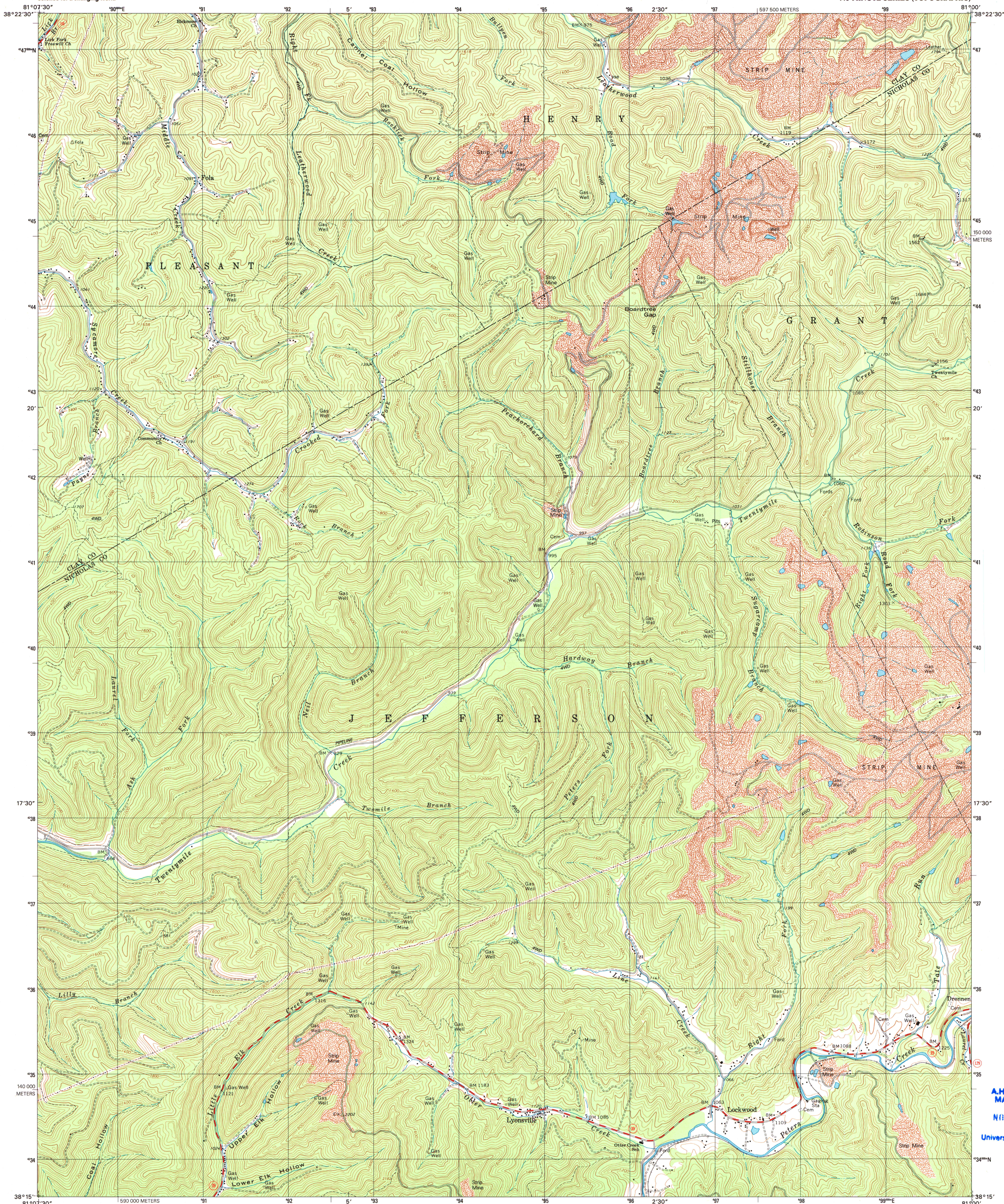


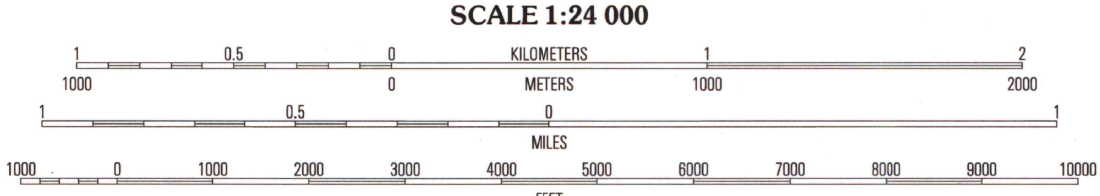
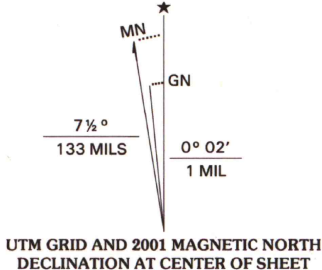


U.S. DEPARTMENT OF THE INTERIOR  
U.S. GEOLOGICAL SURVEY

LOCKWOOD QUADRANGLE  
WEST VIRGINIA  
7.5-MINUTE SERIES (TOPOGRAPHIC)



Produced by the United States Geological Survey  
Topography compiled 1996. Planimetry derived from imagery taken 1996 and other sources. Survey control current as of 1967 boundaries current as of 2001.  
North American Datum of 1983 (NAD 83). Projection and 1000-meter grid: Universal Transverse Mercator, zone 17 2500-meter ticks: West Virginia Coordinate System of 1983 (south zone).  
North American Datum of 1927 (NAD 27) is shown by dashed corner ticks. The values of the shift between NAD 83 and NAD 27 for 7.5-minute intersections are obtainable from National Geodetic Survey NADCON software.  
Houses of worship, schools, and other labeled buildings verified 1967.



CONTOUR INTERVAL 40 FEET  
NATIONAL GEODETIC VERTICAL DATUM OF 1929  
(TO CONVERT ELEVATIONS TO THE NORTH AMERICAN VERTICAL DATUM OF 1988, SUBTRACT 1 FOOT)  
TO CONVERT FROM FEET TO METERS, MULTIPLY BY 0.3048



1	2	3	1 Elkhusht
			2 Clay
			3 Sandale
4		5	4 Bentree
			5 Gilboa
			6 Gabley Bridge
			7 Ansted
6	7	8	8 Summersville Dam

ADJOINING 7.5' QUADRANGLES

ROAD CLASSIFICATION  
Primary highway  
hard surface .....  
Secondary highway  
hard surface .....  
Interstate Route  
U.S. Route  
State Route  
Light-duty road, hard or  
improved surface .....  
Unimproved road .....

LOCKWOOD, WV  
1996

NIMA 4760 1 SE-SERIES V854

A.H. ROBINSON  
MAP LIBRARY

NOV 21 2002

University of Wisconsin  
Madison

U.S. Regional  
Depository Copy  
DO NOT DISCARD

