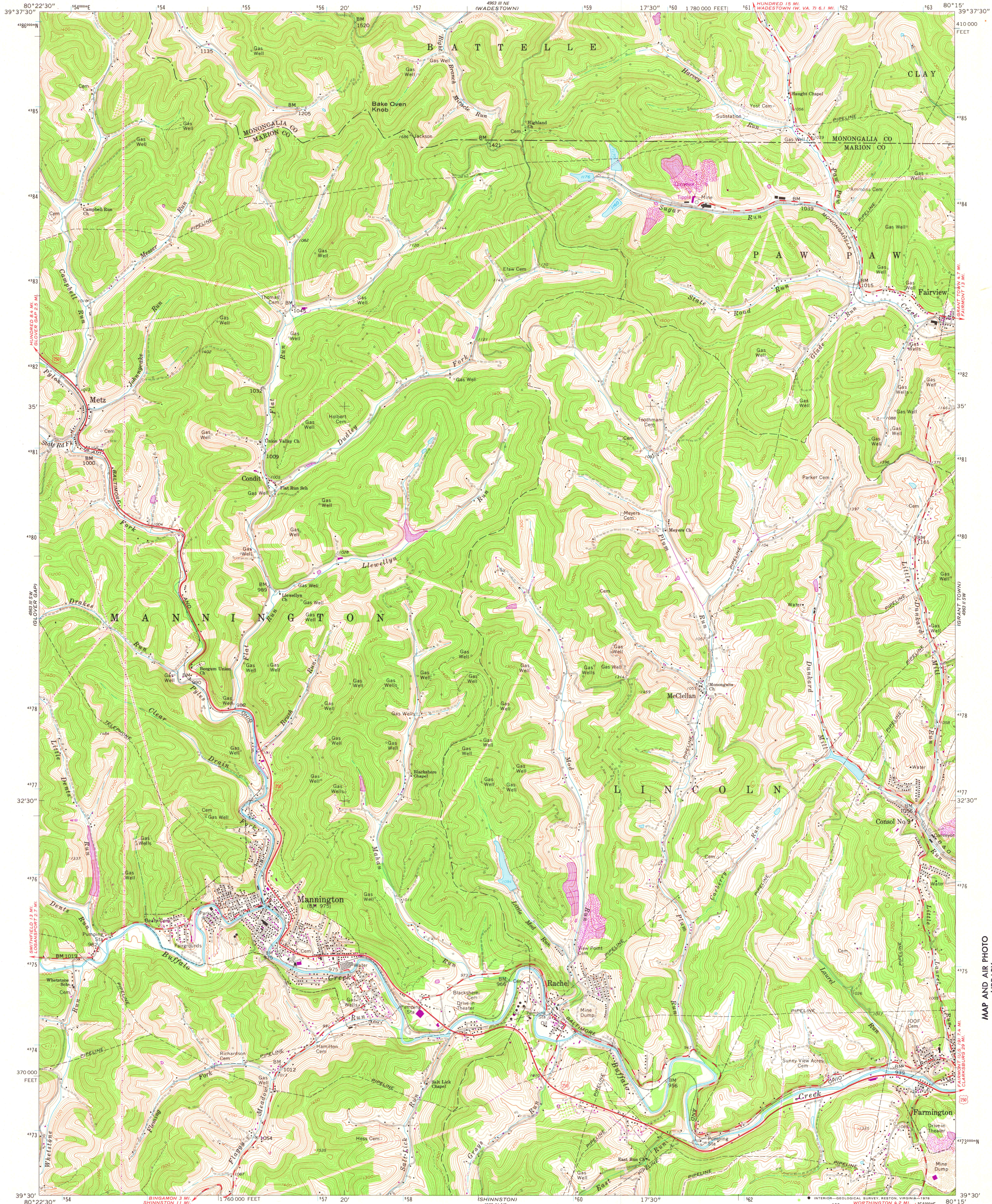


UNITED STATES
DEPARTMENT OF THE INTERIOR
GEOLOGICAL SURVEY

MANNINGTON QUADRANGLE
WEST VIRGINIA
7.5 MINUTE SERIES (TOPOGRAPHIC)
SE/4 MANNINGTON 15' QUADRANGLE



Mapped, edited, and published by the Geological Survey

Control by USGS and USC&GS

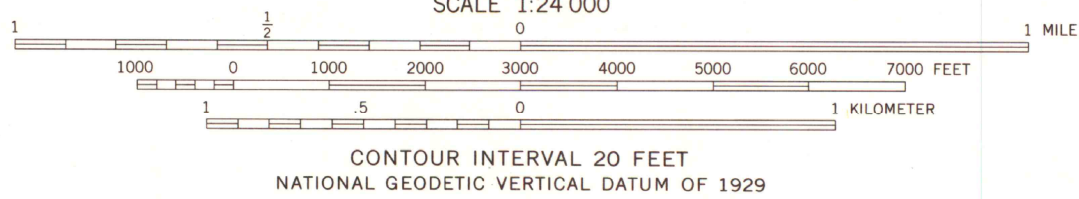
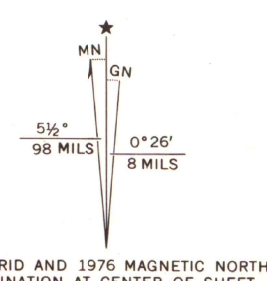
Topography by photogrammetric methods from aerial photographs taken 1957. Field checked 1960

Polyconic projection. 1927 North American datum 10,000-foot grid based on West Virginia coordinate system, north zone

1000-meter Universal Transverse Mercator grid ticks, zone 17, shown in blue

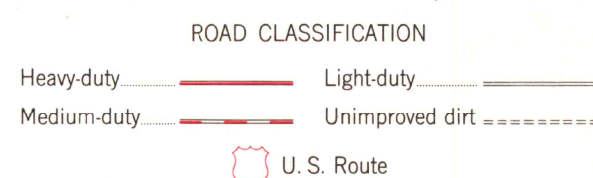
Fine red dashed lines indicate selected fence and field lines where generally visible on aerial photographs. This information is unchecked

Unlabeled wells are oil wells



THIS MAP COMPLIES WITH NATIONAL MAP ACCURACY STANDARDS
FOR SALE BY U. S. GEOLOGICAL SURVEY, RESTON, VIRGINIA 22092
A FOLDER DESCRIBING TOPOGRAPHIC MAPS AND SYMBOLS IS AVAILABLE ON REQUEST

Revisions shown in purple compiled from aerial photographs taken 1976. This information not field checked



MANNINGTON, W. VA.
SE/4 MANNINGTON 15' QUADRANGLE
N3930—W8015/7.5

1960

PHOTOREVISED 1976
AMS 4963 III SE—SERIES V854

MAP AND AIR PHOTO
LIBRARY

AUG 10 1978

University of Wisconsin
Madison