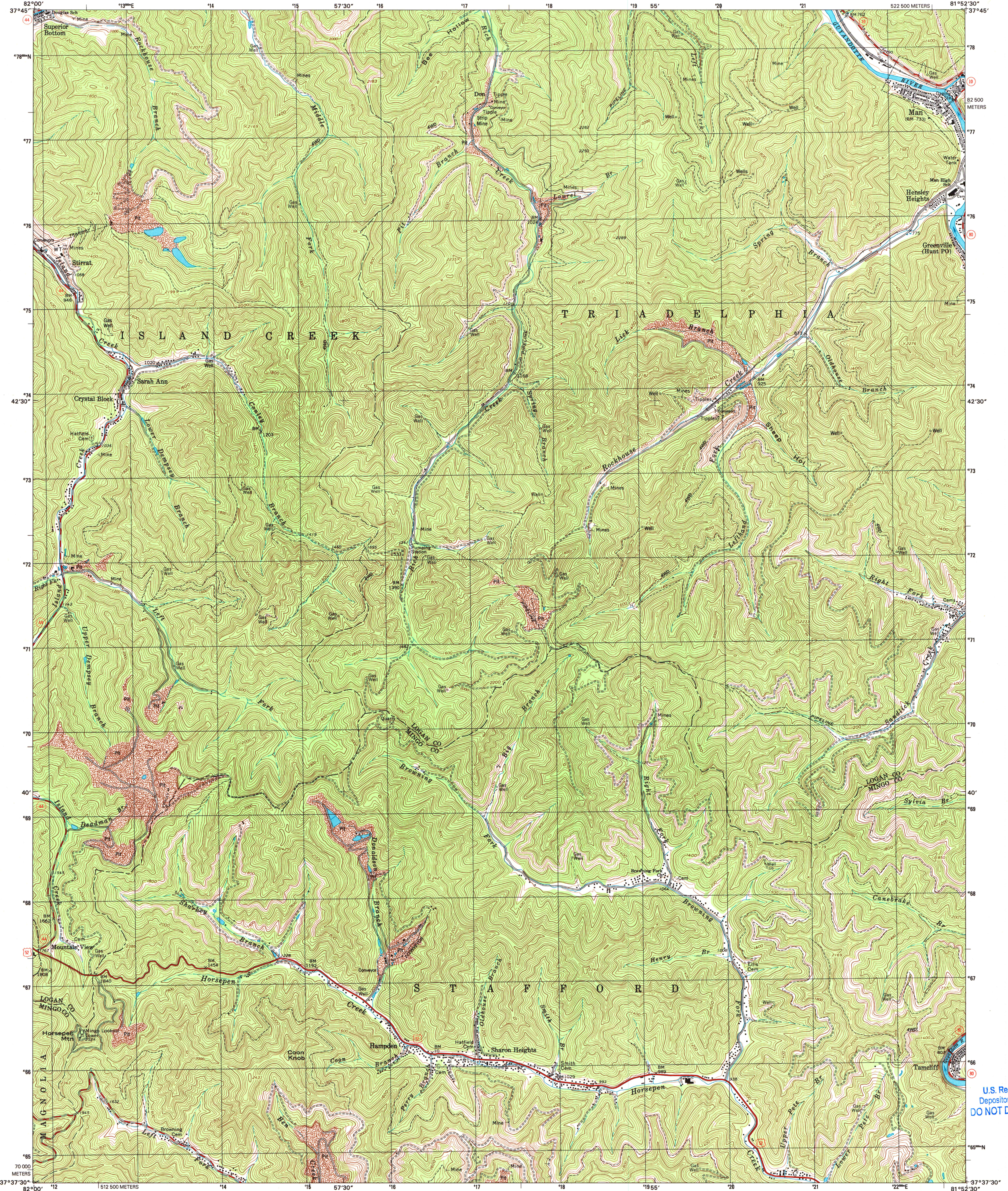


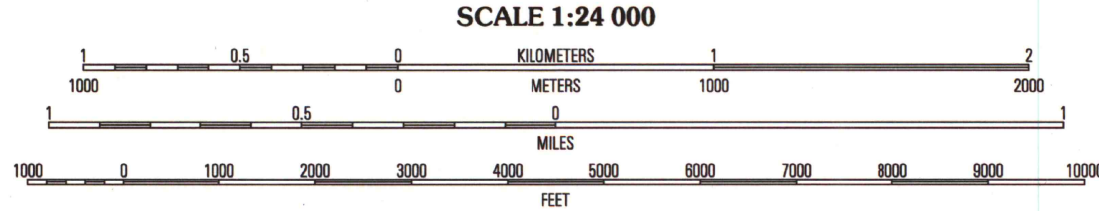
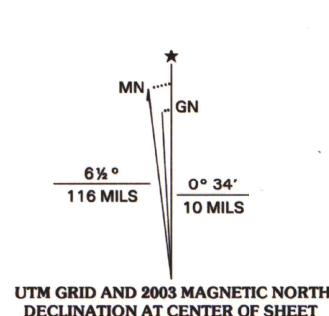


U.S. DEPARTMENT OF THE INTERIOR  
U.S. GEOLOGICAL SURVEY

MAN QUADRANGLE  
WEST VIRGINIA  
7.5-MINUTE SERIES (TOPOGRAPHIC)



Produced by the United States Geological Survey  
Topography compiled 1996. Planimetry derived from imagery taken 1996 and other sources. Survey control current as of 1963. Boundaries current as of 2002.  
North American Datum of 1983 (NAD 83). Projection and 1 000-meter grid: Universal Transverse Mercator, zone 17 2500-meter ticks: West Virginia Coordinate System of 1983 (south zone).  
North American Datum of 1927 (NAD 27) is shown by dashed corner ticks. The values of the shift between NAD 83 and NAD 27 for 7.5-minute intersections are obtainable from National Geodetic Survey NADCON software.  
Houses of worship, schools, and other labeled buildings verified 1963.



CONTOUR INTERVAL 40 FEET  
NATIONAL GEODETIC VERTICAL DATUM OF 1929  
(TO CONVERT ELEVATIONS TO THE NORTH AMERICAN VERTICAL DATUM OF 1988, SUBTRACT 1 FOOT)  
TO CONVERT FROM FEET TO METERS, MULTIPLY BY 0.3048



ROAD CLASSIFICATION  
Primary highway  
hard surface .....  
Secondary highway  
hard surface .....  
Light-duty road, hard or  
improved surface .....  
Unimproved road .....  
Interstate Route  
U.S. Route  
State Route

1	2	3	1 Holden
			2 Logan
			3 Ambersdale
4		5	4 Barnabus
			5 Mallory
			6 Majestic
6	7	8	7 Wharfedale
			8 Gilbert

ARTHUR H. ROBINSON MAP LIBRARY  
University of Wisconsin-Madison  
9-23-03  
MAN, WV  
1996  
NIMA 4659 III NW-SERIES V854

U.S. Regional  
Depository Copy  
DO NOT DISCARD