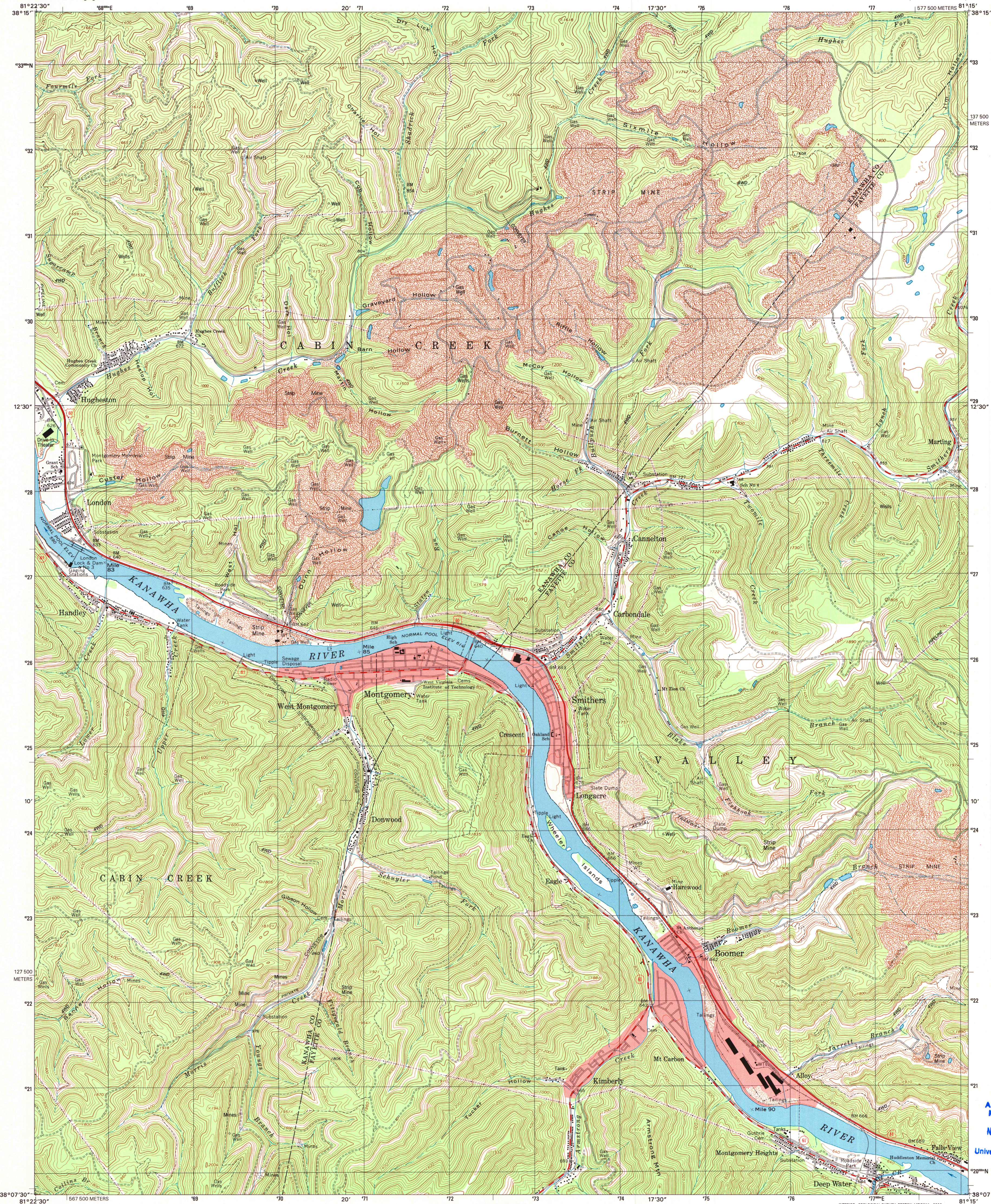


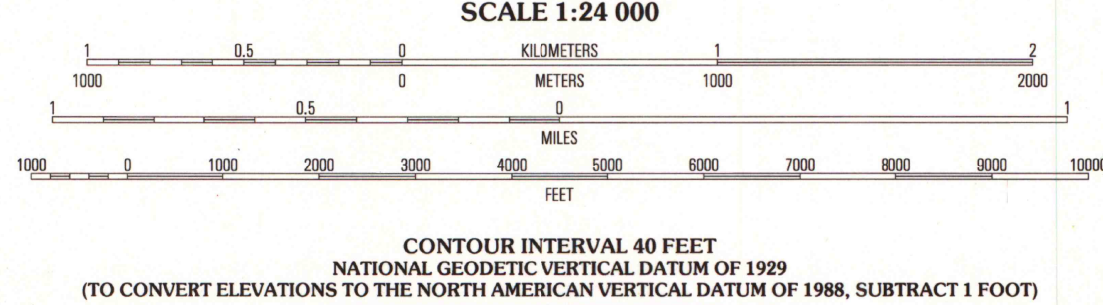
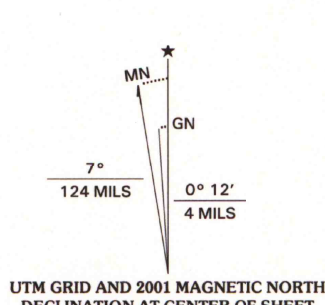


U.S. DEPARTMENT OF THE INTERIOR
U.S. GEOLOGICAL SURVEY

MONTGOMERY QUADRANGLE
WEST VIRGINIA
7.5-MINUTE SERIES (TOPOGRAPHIC)



Produced by the United States Geological Survey
Topography compiled 1996. Planimetry derived from imagery
taken 1996 and other sources. Survey control current as of 1965
Boundaries current as of 2001.
North American Datum of 1983 (NAD 83). Projection and
1 000-meter grid: Universal Transverse Mercator, zone 17
2 500-meter ticks: West Virginia Coordinate System of 1983
(south zone)
North American Datum of 1927 (NAD 27) is shown by dashed
corner ticks. The values of the shift between NAD 83 and
NAD 27 for 7.5-minute intersections are obtainable from
National Geodetic Survey NADCON software.
Houses of worship, schools, and other labeled buildings verified 1965



ROAD CLASSIFICATION
Primary highway
Secondary highway
Unimproved road
Interstate Route
U.S. Route
State Route

1	2	3	1 Quick
			2 Mammoth
			3 Bentree
4		5	4 Cedar Grove
			5 Gaudy Bridge
			6 Eakdale
6	7	8	7 Powellton
			8 Beckwith

MONTGOMERY, WV
1996
NIMA 4760 III NE-SERIES V854

A.H. ROBINSON
MAP LIBRARY
NOV 21 2002
University of Wisconsin
Madison

U.S. Regional
Depository Copy
DO NOT DISCARD

