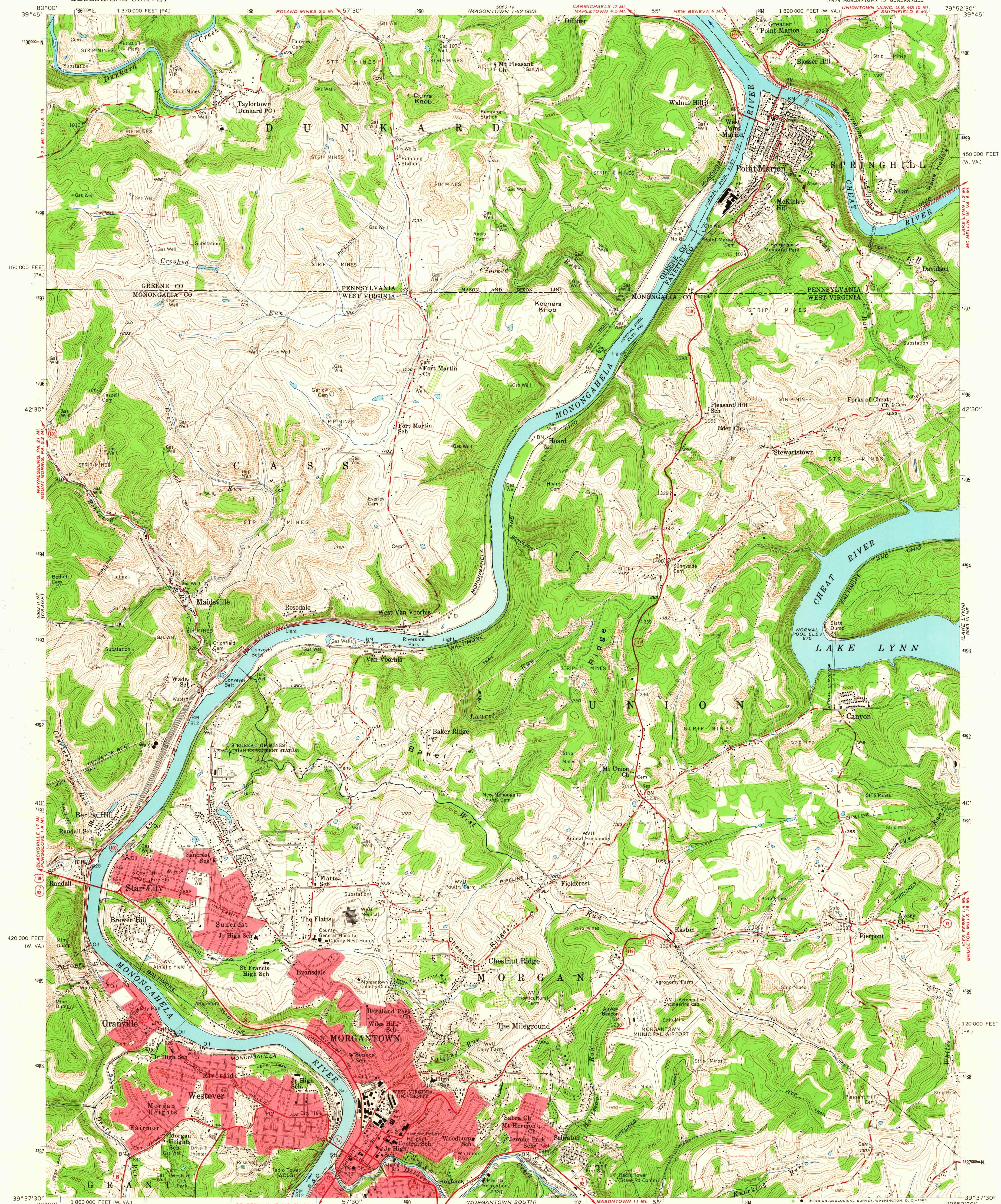


UNITED STATES
DEPARTMENT OF THE INTERIOR
GEOLOGICAL SURVEY

MORGANTOWN NORTH QUADRANGLE
WEST VIRGINIA-PENNSYLVANIA
7.5 MINUTE SERIES (TOPOGRAPHIC)



Mapped, edited, and published by the Geological Survey
Control by USGS, USC&GS, and USCE

Topography from aerial photographs by Kelsh plotter
Aerial photographs taken 1955. Field check 1957

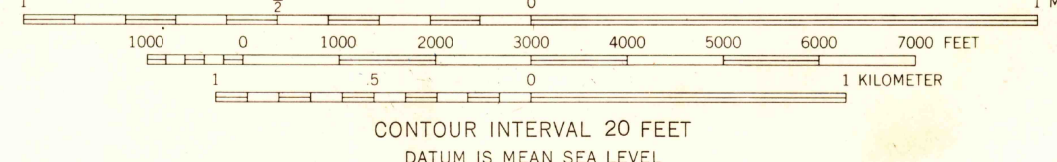
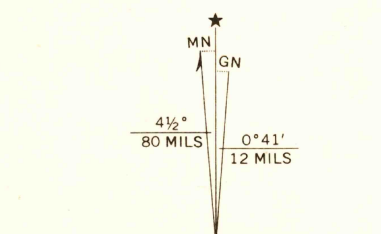
Polyconic projection. 1927 North American datum
10,000-foot grids based on West Virginia coordinate system,
north zone, and Pennsylvania coordinate system, south zone
1000-meter Universal Transverse Mercator grid ticks,
zone 17, shown in blue

Fine red dashed lines indicate selected fence and field lines
visible on aerial photographs. This information is unchecked

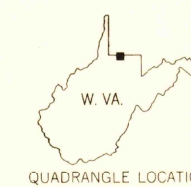
Contours in strip mine areas from 1955 photography

Red tint indicates areas in which only
landmark buildings are shown

Unchecked elevations are shown in brown



THIS MAP COMPLIES WITH NATIONAL MAP ACCURACY STANDARDS
FOR SALE BY U.S. GEOLOGICAL SURVEY, WASHINGTON, D.C. 20242
A FOLDER DESCRIBING TOPOGRAPHIC MAPS AND SYMBOLS IS AVAILABLE ON REQUEST



U.S.G.S.
FILE COPY
TOPOGRAPHIC DIVISION

MORGANTOWN NORTH, W. VA.—PA.
NW 1/4 MORGANTOWN 15' QUADRANGLE
N3937.5—W7952.5/7.5

1957
AMS 5063 III NW—SERIES V854

OCT 1 1965

6240