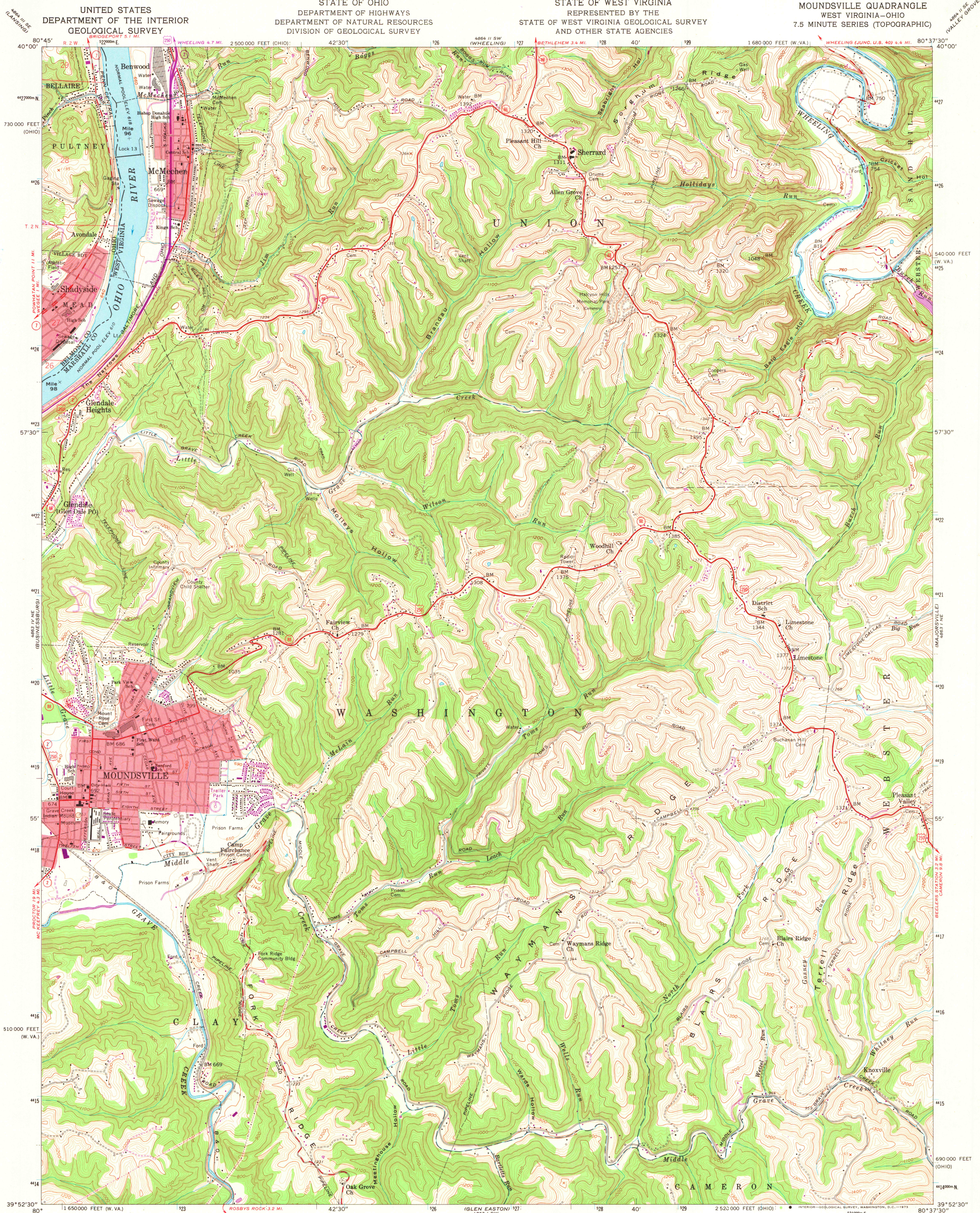


UNITED STATES  
DEPARTMENT OF THE INTERIOR  
GEOLOGICAL SURVEY

STATE OF OHIO  
DEPARTMENT OF HIGHWAYS  
DEPARTMENT OF NATURAL RESOURCES  
DIVISION OF GEOLOGICAL SURVEY

STATE OF WEST VIRGINIA  
REPRESENTED BY THE  
STATE OF WEST VIRGINIA GEOLOGICAL SURVEY  
AND OTHER STATE AGENCIES

MOUNDSVILLE QUADRANGLE  
WEST VIRGINIA-OHIO  
7.5 MINUTE SERIES (TOPOGRAPHIC)



Mapped, edited, and published by the Geological Survey

Control by USGS and USC&GS

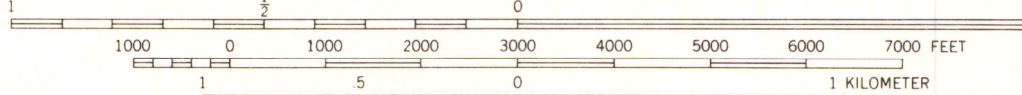
Topography from aerial photographs by photogrammetric methods  
Aerial photographs taken 1956, 1957, and 1958. Field check 1960

Projection. 1927 North American datum  
10,000-foot grids based on West Virginia coordinate system,  
north zone, and Ohio coordinate system, south zone  
1000-meter Universal Transverse Mercator grid ticks,  
zone 17, shown in blue

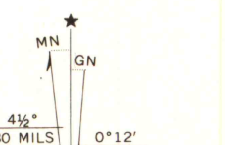
The state boundary as shown represents the approximate position  
of the low water line as determined from U.S. Corps of Engineers,  
Ohio River charts, surveyed 1913, and supplementary information

Red tint indicates areas in which only landmark buildings are shown  
Land lines based on the Ohio River Base

Ohio portion lies within the Old Seven Ranges



CONTOUR INTERVAL 20 FEET  
DOTTED LINES REPRESENT 10-FOOT CONTOURS  
DATUM IS MEAN SEA LEVEL



ROAD CLASSIFICATION  
Heavy-duty ——— Light-duty ———  
Medium-duty ——— Unimproved dirt ———  
U.S. Route ——— State Route ———

MOUNDSVILLE, W. VA.-OHIO

N3952.5-W8037.5/7.5

1960  
PHOTOREVISED 1972  
AMS 4863 1 NW-SERIES V854

MAP AND AIR PHOTO  
LIBRARY

JUN 11 1973

University of Wisconsin

THIS MAP COMPLIES WITH NATIONAL MAP ACCURACY STANDARDS  
FOR SALE BY U.S. GEOLOGICAL SURVEY, WASHINGTON, D.C. 20542  
A FOLDER DESCRIBING TOPOGRAPHIC MAPS AND SYMBOLS IS AVAILABLE ON REQUEST

Revisions shown in purple compiled in cooperation with  
State of Ohio agencies from aerial photographs taken  
1972. This information not field checked