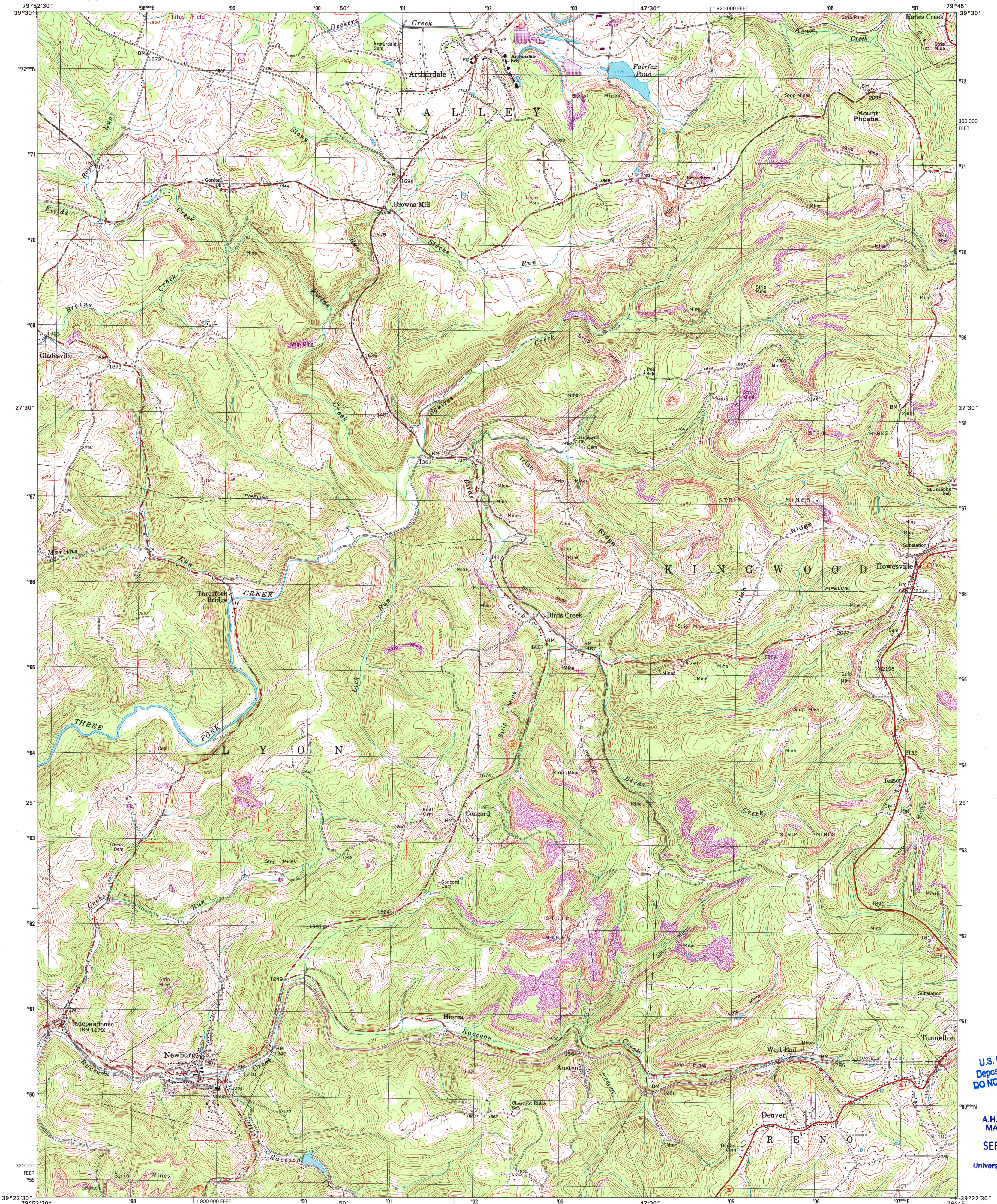




U.S. DEPARTMENT OF THE INTERIOR
U.S. GEOLOGICAL SURVEY

STATE OF WEST VIRGINIA
REPRESENTED BY THE
STATE OF WEST VIRGINIA GEOLOGICAL AND ECONOMIC SURVEY
AND OTHER STATE AGENCIES

NEWBURG QUADRANGLE
WEST VIRGINIA-PRESTON CO.
7.5-MINUTE SERIES (TOPOGRAPHIC)



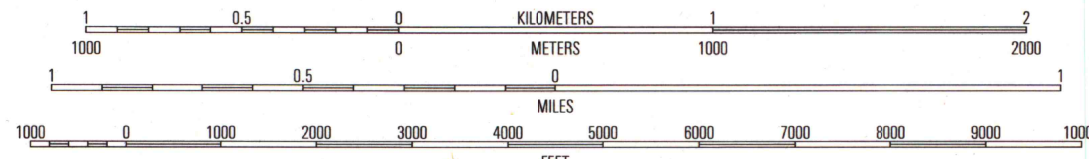
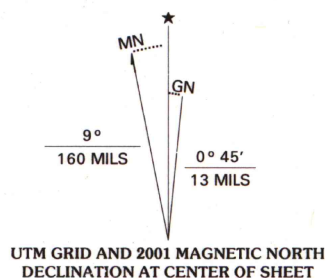
U.S. Regional
Depository Copy
DO NOT DISCARD

A.H. ROBINSON
MAP LIBRARY

SEP 11 2001

University of Wisconsin
Madison

Produced by the United States Geological Survey
Topography compiled 1956. Planimetry derived from imagery taken 1976 and other sources. Photoinspected using imagery dated 1997; no major culture or drainage changes observed. Survey control current as of 1960. Boundaries, other than corporate, verified 2001
North American Datum of 1927 (NAD 27). Projection and 10 000-foot ticks. West Virginia coordinate system, north zone (Lambert conformal conic)
1000-meter Universal Transverse Mercator grid, zone 17
North American Datum of 1983 (NAD 83) is shown by dashed corner ticks. The values of the shift between NAD 27 and NAD 83 for 7.5-minute intersections are obtainable from National Geodetic Survey NADCON software
Information shown in purple may not meet USGS content standards and may conflict with previously mapped contours



CONTOUR INTERVAL 20 FEET
NATIONAL GEODETIC VERTICAL DATUM OF 1929
TO CONVERT FROM FEET TO METERS, MULTIPLY BY 0.3048



1	2	3	1 Morgantown South
4	5	6	2 Macon
7	8	9	3 Valley Point
10	11	12	4 Gladesville
13	14	15	5 Kingwood
16	17	18	6 Thornton
19	20	21	7 Follensville
22	23	24	8 Rowlesburg

ROAD CLASSIFICATION
Primary highway
Secondary highway
Light-duty road, hard or improved surface
Unimproved road
Interstate Route
U.S. Route
State Route

NEWBURG, WV
1997

NIMA 5662 IV NE-SERIES V854

THIS MAP COMPLIES WITH NATIONAL MAP ACCURACY STANDARDS
FOR SALE BY U.S. GEOLOGICAL SURVEY, P.O. BOX 25286, DENVER, COLORADO 80225
A FOLDER DESCRIBING TOPOGRAPHIC MAPS AND SYMBOLS IS AVAILABLE ON REQUEST

