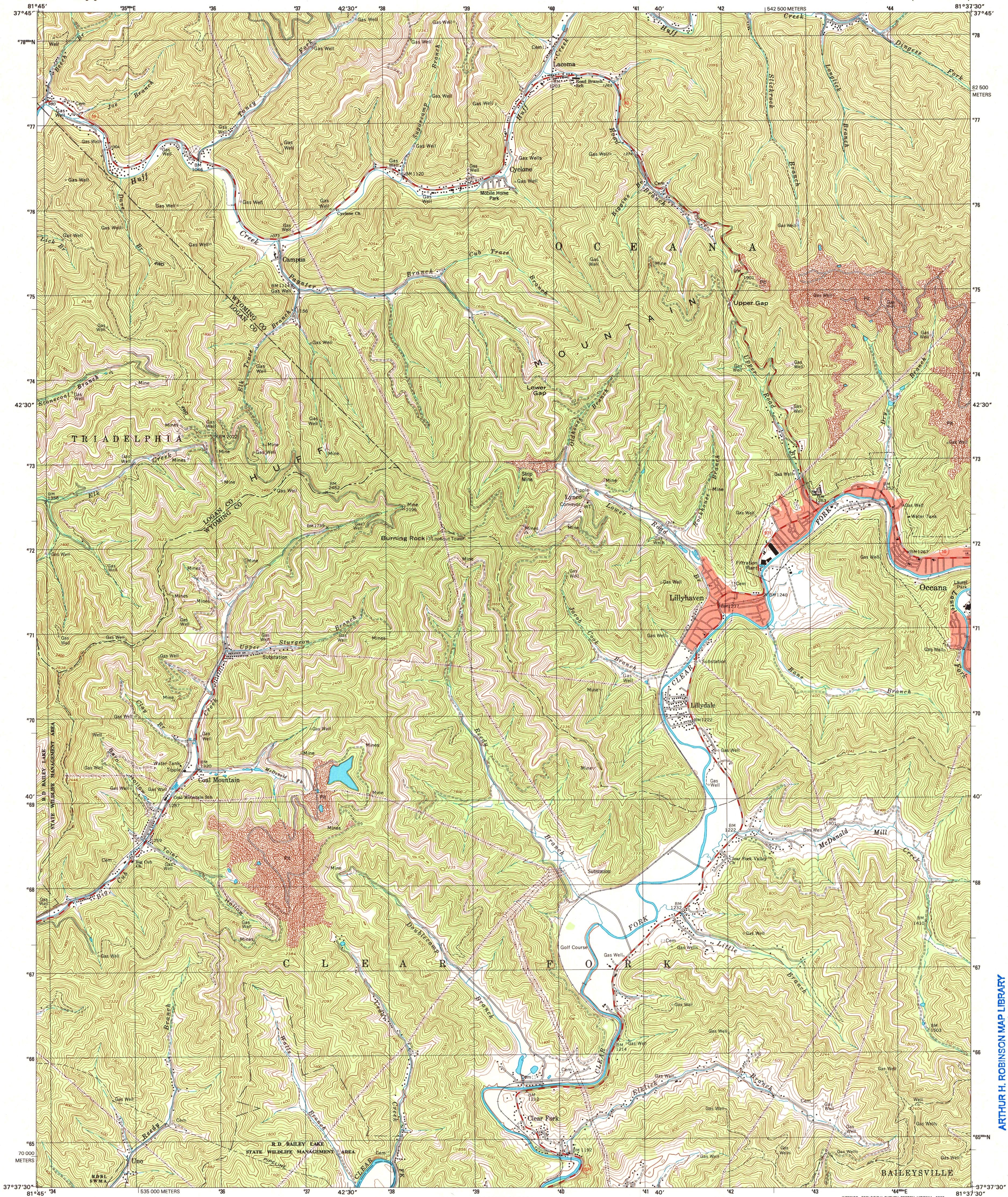


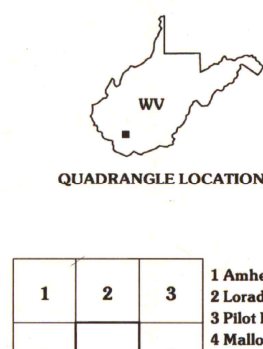
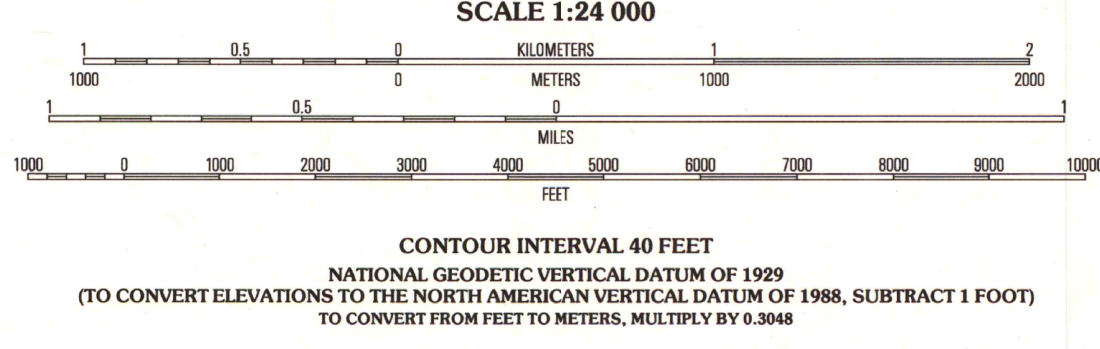
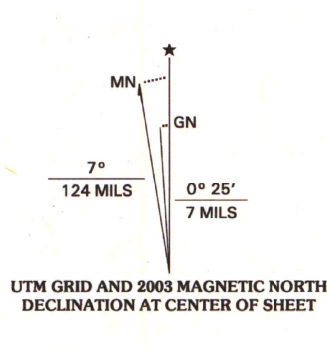


U.S. DEPARTMENT OF THE INTERIOR  
U.S. GEOLOGICAL SURVEY

OCEANA QUADRANGLE  
WEST VIRGINIA  
7.5-MINUTE SERIES (TOPOGRAPHIC)



Produced by the United States Geological Survey  
Topography compiled 1996. Planimetry derived from imagery  
taken 1996 and other sources. Survey control current as of 1968  
Boundaries current as of 2002  
North American Datum of 1983 (NAD 83). Projection and  
1 000-meter grid: Universal Transverse Mercator, zone 17  
2 500-meter ticks: West Virginia Coordinate System of 1983  
(south zone)  
North American Datum of 1927 (NAD 27) is shown by dashed  
corner ticks. The values of the shift between NAD 83 and  
NAD 27 for 7.5-minute intersections are obtainable from  
National Geodetic Survey NADCON software  
There may be private inholdings within the boundaries of the  
National or State reservations shown on this map  
Houses of worship, schools, and other labeled buildings verified 1968



ROAD CLASSIFICATION  
Primary highway  
hard surface .....  
Secondary highway  
hard surface .....  
Light-duty road, hard or  
improved surface .....  
Unimproved road .....  
Interstate Route  
U.S. Route  
State Route

1	2	3
4	5	6
7	8	9

U.S. Regional  
Depository Copy  
DO NOT DISCARD

OCEANA, WV  
1996

NIMA 4659 II NW-SERIES V854

THIS MAP COMPLIES WITH NATIONAL MAP ACCURACY STANDARDS  
FOR SALE BY U.S. GEOLOGICAL SURVEY, P.O. BOX 25286, DENVER, COLORADO 80225  
A FOLDER DESCRIBING TOPOGRAPHIC MAPS AND SYMBOLS IS AVAILABLE ON REQUEST

ARTHUR H. ROBINSON MAP LIBRARY  
University of Wisconsin-Madison  
JUL 1 2004