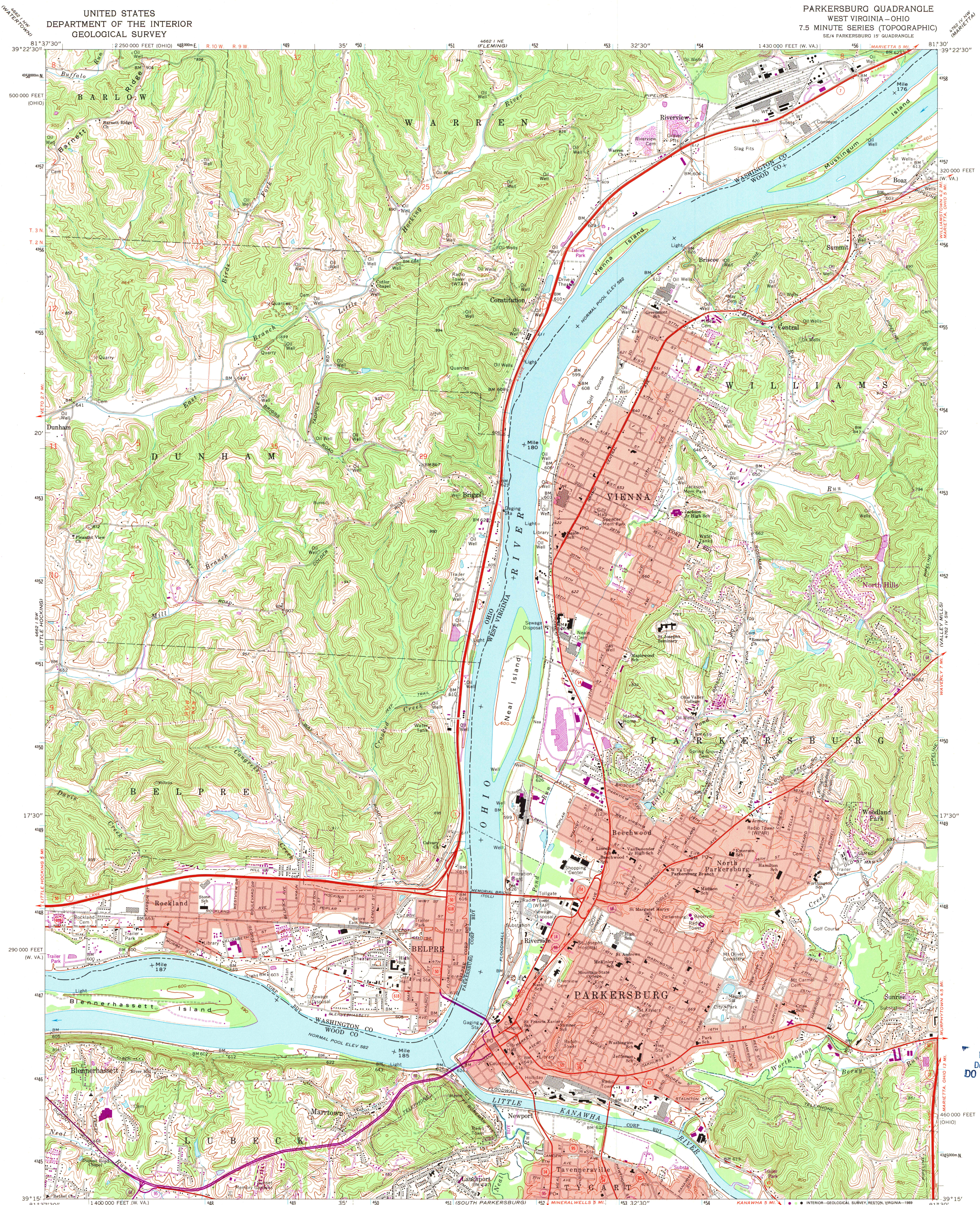


UNITED STATES  
DEPARTMENT OF THE INTERIOR  
GEOLOGICAL SURVEY

PARKERSBURG QUADRANGLE  
WEST VIRGINIA- OHIO  
7.5 MINUTE SERIES (TOPOGRAPHIC)  
SE 1/4 PARKERSBURG 15' QUADRANGLE



Maped, edited, and published by the Geological Survey  
Revised in cooperation with State of Ohio agencies  
Control by USGS, USC&GS, and USCE  
Topography by photogrammetric methods from aerial photographs  
taken 1955. Field checked 1957  
Revised from aerial photographs taken 1968. Field checked 1969  
Polyconic projection. 1927 North American datum  
10,000-foot grids based on West Virginia coordinate system, north  
zone, and Ohio coordinate system, south zone. 1000-meter Universal  
Transverse Mercator grid ticks, zone 17, shown in blue  
Fine red dashed lines indicate selected fence and field lines where  
generally visible on aerial photographs. This information is uncorrected  
Red tint indicates areas in which only landmark buildings are shown  
The state boundary as shown represents the approximate position of  
the low water line as determined from U. S. Corps of Engineers  
Ohio River charts, surveyed 1913, and supplementary information  
Land lines based on Ohio River Base. Dotted lines established  
by private subdivision of Ohio Company Purchase

UTM GRID AND 1983 MAGNETIC NORTH  
DECLINATION AT CENTER OF SHEET  
To place on the predicted North American Datum 1983  
move the projection lines 5 meters south and  
14 meters west as shown by dashed corner ticks

SCALE 1:24,000  
DOTTED LINES REPRESENT 10-FOOT CONTOURS  
NATIONAL GEODETIC VERTICAL DATUM OF 1929

THIS MAP COMPLIES WITH NATIONAL MAP ACCURACY STANDARDS  
FOR SALE BY U.S. GEOLOGICAL SURVEY  
DENVER, COLORADO 80225 OR RESTON, VIRGINIA 22092  
A FOLDER DESCRIBING TOPOGRAPHIC MAPS AND SYMBOLS IS AVAILABLE ON REQUEST

Revisions shown in purple and woodland compiled from  
aerial photographs taken 1987 and other sources. This  
information not field checked. Map edited 1989  
Portions of Ohio-West Virginia boundary in dispute, not shown

ROAD CLASSIFICATION  
Primary highway, all weather, improved surface  
Secondary highway, all weather, improved surface  
Light-duty road, all weather, improved surface  
Unimproved road, fair or dry weather  
Interstate Route U.S. Route State Route

U.S. Regional  
Depository Copy  
DO NOT DISCARD

A.H. ROBINSON  
MAP LIBRARY  
MAY - 1 1990  
University of Wisconsin  
Madison

PARKERSBURG, W. VA. - OHIO  
SE 1/4 PARKERSBURG 15' QUADRANGLE  
39081-C5-TF-024  
1969  
PHOTOREVISED 1989  
DMA 4662 1 SE - SERIES V852