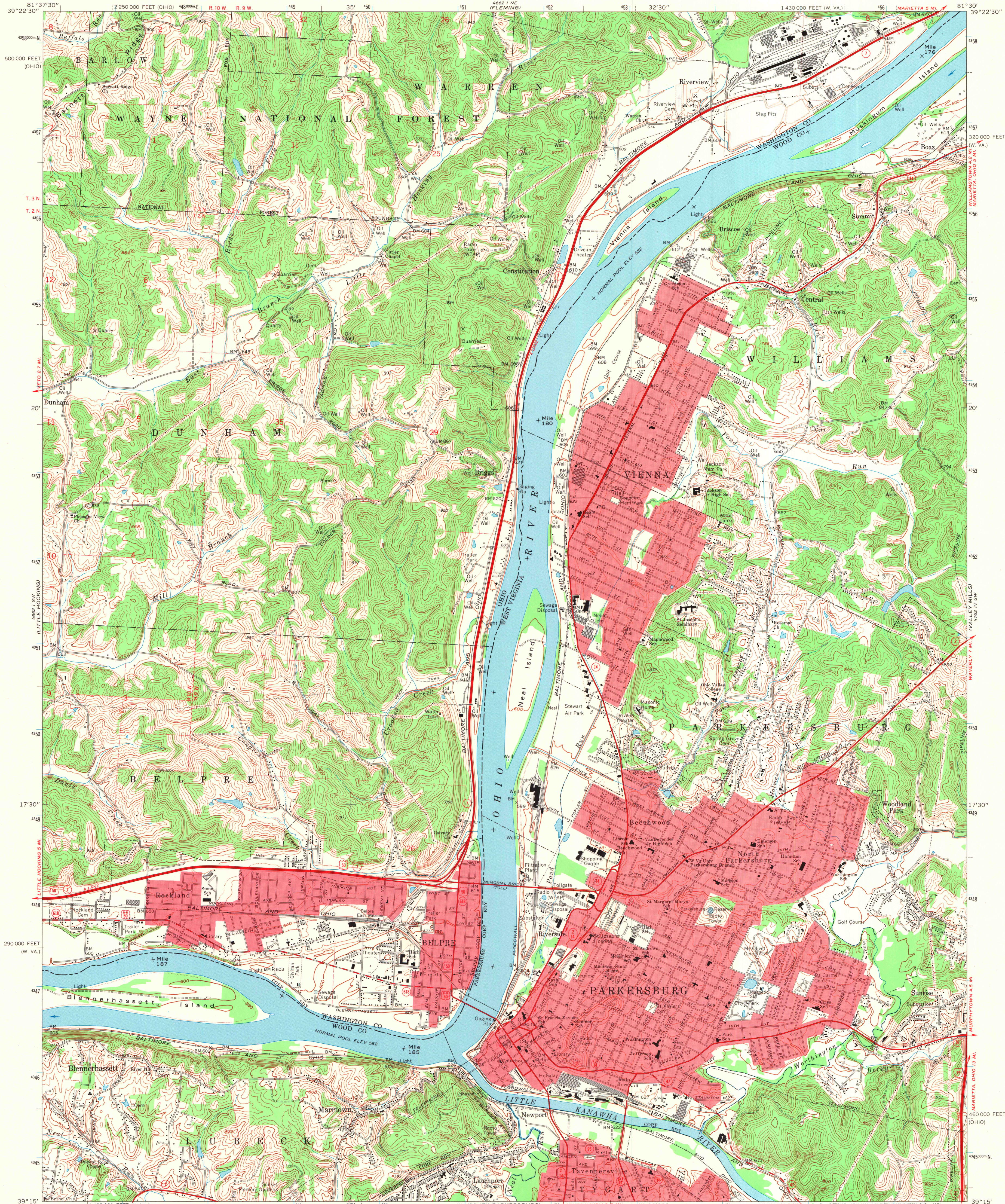


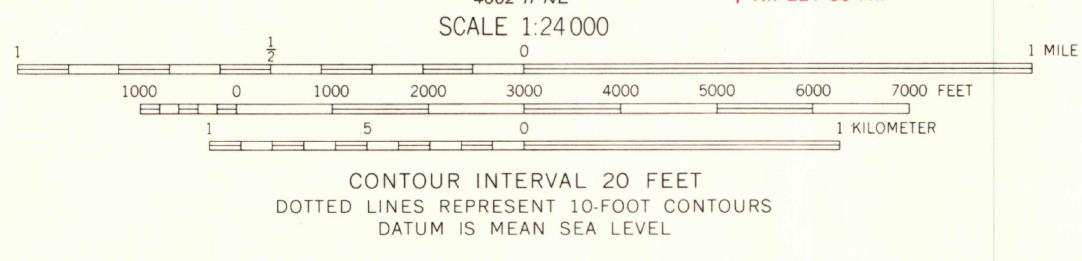
UNITED STATES
DEPARTMENT OF THE INTERIOR
GEOLOGICAL SURVEY

PARKERSBURG QUADRANGLE
WEST VIRGINIA- OHIO
7.5 MINUTE SERIES (TOPOGRAPHIC)
SE/4 PARKERSBURG 15' QUADRANGLE



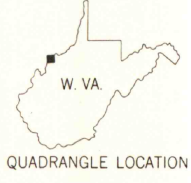
Mapped, edited, and published by the Geological Survey
Revised in cooperation with State of Ohio agencies
Control by USGS, USC&GS, and USCE
Topography by photogrammetric methods from aerial photographs
taken 1955. Field checked 1957.
Revised from aerial photographs taken 1968. Field checked 1969
Polyconic projection. 1927 North American datum
10,000-foot grids based on West Virginia coordinate system, north
zone, and Ohio coordinate system, south zone. 1000-meter Universal
Transverse Mercator grid ticks, zone 17, shown in blue
Fine red dashed lines indicate selected fence and field lines where
generally visible on aerial photographs. This information is unchecked
Red tint indicates areas in which only landmark buildings are shown
The state boundary as shown represents the approximate position of
the low water line as determined from U.S. Corps of Engineers
Ohio River charts, surveyed 1913, and supplementary information
Land lines based on Ohio River Base. Dotted land lines established
by private subdivision of Ohio Company Purchase

UTM GRID AND 1969 MAGNETIC NORTH
DECLINATION AT CENTER OF SHEET



THIS MAP COMPLIES WITH NATIONAL MAP ACCURACY STANDARDS
FOR SALE BY U.S. GEOLOGICAL SURVEY, WASHINGTON, D. C. 20242
A FOLDER DESCRIBING TOPOGRAPHIC MAPS AND SYMBOLS IS AVAILABLE ON REQUEST

ROAD CLASSIFICATION
Primary highway, all weather, hard surface
Secondary highway, all weather, hard surface
Light-duty road, all weather, improved surface
Unimproved road, fair or dry weather
Interstate Route
U. S. Route
State Route



PARKERSBURG, W. VA.- OHIO
SE/4 PARKERSBURG 15' QUADRANGLE
N3915-W8130/7.5

1969

AMS 4662 I SE-SERIES V852

MAP AND AIR PHOTO
LIBRARY

DEC 3 - 1971

University of Wisconsin