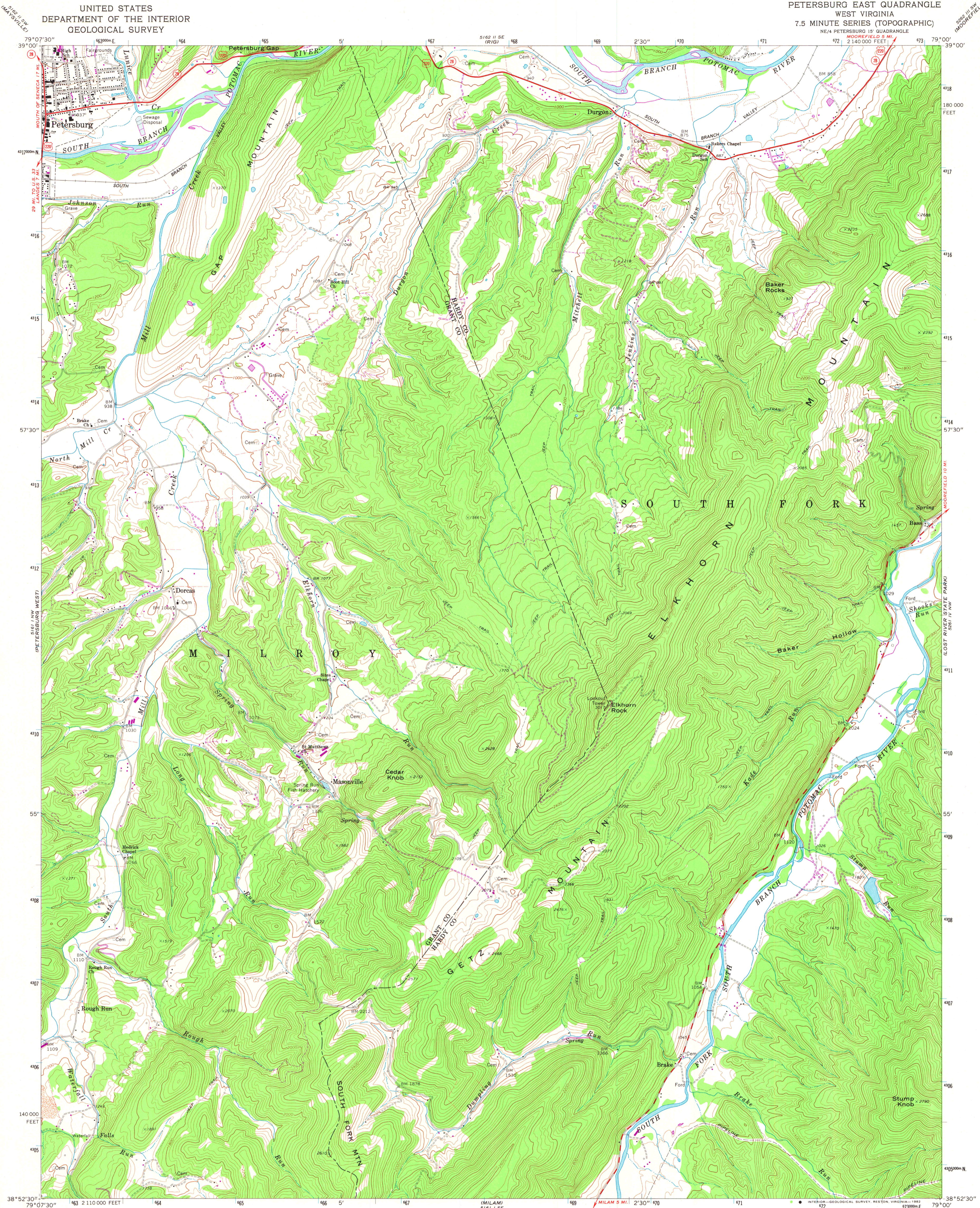


UNITED STATES
DEPARTMENT OF THE INTERIOR
GEOLOGICAL SURVEY

PETERSBURG EAST QUADRANGLE
WEST VIRGINIA
7.5 MINUTE SERIES (TOPOGRAPHIC)
NE 1/4 PETERSBURG 15' QUADRANGLE
MOOREFIELD 5 MI.
2 140 000 FEET



Mapped, edited, and published by the Geological Survey

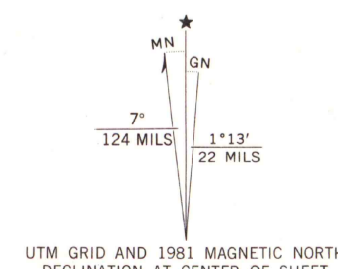
Control by USGS and NOS/NOAA

Topography by photogrammetric methods from aerial photographs taken 1966. Field checked 1969

Polyconic projection. 10,000-foot grid ticks based on West Virginia coordinate system, north zone. 1000-meter Universal Transverse Mercator grid ticks, zone 17, shown in blue 1927 North American Datum. To place on the predicted North American Datum 1983 move the projection lines 7 meters south and 21 meters west as shown by dashed corner ticks

Fine red dashed lines indicate selected fence and field lines where generally visible on aerial photographs. This information is unchecked

Revisions shown in purple and woodland compiled in cooperation with state of West Virginia agencies from aerial photographs taken 1979 and other sources. This information not field checked. Map edited 1981



SCALE 1:24000

1 1000 0 1000 2000 3000 4000 5000 6000 7000 FEET
1 5 10 15 20 KILOMETER

CONTOUR INTERVAL 40 FEET
DOTTED LINES REPRESENT 20-FOOT CONTOURS
NATIONAL GEODETIC VERTICAL DATUM OF 1929

THIS MAP COMPLIES WITH NATIONAL MAP ACCURACY STANDARDS
FOR SALE BY U. S. GEOLOGICAL SURVEY, RESTON, VIRGINIA 22092
A FOLDER DESCRIBING TOPOGRAPHIC MAPS AND SYMBOLS IS AVAILABLE ON REQUEST



ROAD CLASSIFICATION	
Primary highway, hard surface	Light-duty road, hard or improved surface
Secondary highway, hard surface	Unimproved road
Interstate Route	U. S. Route
	State Route

MAP AND AIR PHOTO
LIBRARY

JUN 21 1982

PETERSBURG EAST, W. VA.

N3852.5—W7900/7.5

University of Wisconsin
Madison

1969
PHOTOREVISED 1981
DMA 5161 I NE—SERIES V854