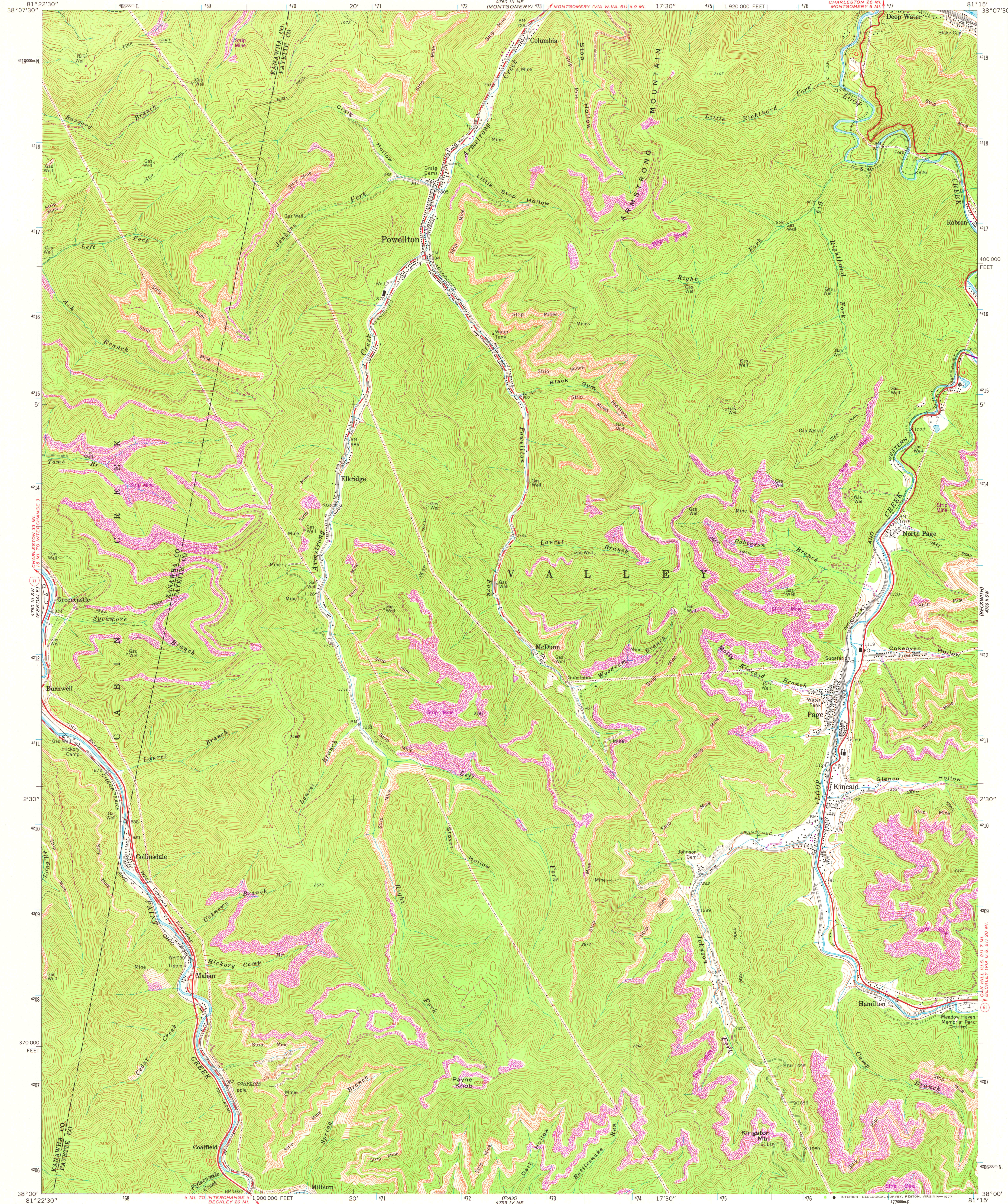
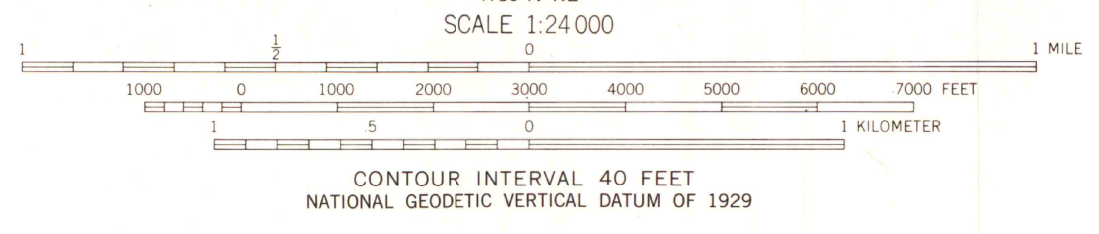
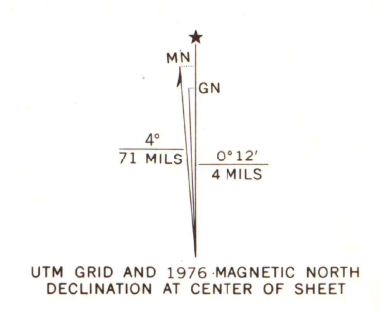


UNITED STATES  
DEPARTMENT OF THE INTERIOR  
GEOLOGICAL SURVEY

POWELLTON QUADRANGLE  
WEST VIRGINIA  
7.5 MINUTE SERIES (TOPOGRAPHIC)  
SE/4 MONTGOMERY 15' QUADRANGLE



Mapped, edited, and published by the Geological Survey  
Control by USGS and USC&GS  
Topography by photogrammetric methods from aerial  
photographs taken 1963. Field checked 1965  
Polyconic projection. 1927 North American datum  
10,000-foot grid based on West Virginia coordinate system,  
south zone  
1000-meter Universal Transverse Mercator grid ticks,  
zone 17, shown in blue  
Revisions shown in purple compiled from aerial photographs  
taken 1976. This information not field checked



MAP AND AIR PHOTO  
LIBRARY  
AUG 10 1978  
University of Wisconsin  
Madison

POWELLTON, W. VA.  
SE/4 MONTGOMERY 15' QUADRANGLE  
N3800-W8115/7.5  
1965  
PHOTOREVISED 1976  
AMS 4760 III SE-SERIES V854

THIS MAP COMPLIES WITH NATIONAL MAP ACCURACY STANDARDS  
FOR SALE BY U. S. GEOLOGICAL SURVEY, RESTON, VIRGINIA 22092  
A FOLDER DESCRIBING TOPOGRAPHIC MAPS AND SYMBOLS IS AVAILABLE ON REQUEST